



FLORIDA DEPARTMENT OF
EDUCATION
fldoe.org

2019-20

Education

Appropriations



Funded by the Educational
Enhancement (Lottery)
Trust Fund

February 2020

This page left blank intentionally.

TABLE OF CONTENTS

| | Page |
|---|------|
| History and Policy: The Florida Lottery and Education..... | 1 |
| Educational Enhancement (Lottery) Trust Fund Appropriations by Fiscal Year..... | 3 |
| Educational Enhancement (Lottery) Trust Fund Appropriations, Operating and Capital Outlay..... | 4 |
| Appropriations from the Educational Enhancement (Lottery) Trust Fund | |
| 2018-19 and 2019-20 | 6 |
| 2015-16, 2016-17, 2017-18 | 7 |
| 2012-13, 2013-14 and 2014-15..... | 8 |
| 2009-10, 2010-11 and 2011-12..... | 9 |
| 2006-07, 2007-08 and 2008-09..... | 10 |
| 2003-04, 2004-05 and 2005-06..... | 11 |
| 1999-00, 2000-01, 2001-02 and 2002-03 | 12 |
| 1995-96, 1996-97, 1997-98 and 1998-99 | 13 |
| 1991-92, 1992-93, 1993-94 and 1994-95 | 14 |
| 1989-90 and 1990-91 | 15 |
| 1987-88 and 1988-89 | 17 |
| 2019-20 Programs and Projects Funded from the Educational Enhancement (Lottery) Trust Fund | |
| Public School System | 18 |
| Florida Colleges..... | 22 |
| State Universities | 24 |
| Student Financial Aid | 26 |
| Educational Enhancement (Lottery) Trust Fund and Total Operating Funds for Education..... | 28 |
| 2019-20 Educational Enhancement (Lottery) Trust Fund Allocations for Operations..... | 29 |
| 2019-20 FEFP Second Calculation | |
| District Discretionary Lottery Funds | 30 |
| Florida School Recognition Program..... | 30 |
| Bright Futures Scholarship Program Student Disbursements by County and Year | 31 |
| K-12 Public School Capital Outlay Construction Bonds..... | 34 |
| Historical Analysis of the General Revenue Fund..... | 35 |
| Educational Enhancement Trust Fund Financial Outlook Statement..... | 36 |

HISTORY AND POLICY: THE FLORIDA LOTTERY AND EDUCATION

On November 4, 1986, a constitutional amendment was passed in a statewide election, creating [Article X, section 15](#), of the Constitution of the State of Florida, providing for the operation of a state lottery. Of the 3,208,295 voters who voted on the amendment, 2,039,437, or 63.57 percent, voted for the amendment, while 1,168,858, or 36.43 percent, voted against it.

The 1987 Legislature enacted the Florida Public Education Lottery Act, codified as [chapter 87-65, Laws of Florida \(L.O.F.\)](#) to implement the constitutional amendment. [Section 24.102\(2\), Florida Statutes \(F.S.\)](#), expresses the intent of the Florida Legislature for the lottery to generate additional funds for education to be administered by a self-supporting, revenue-producing state department that functions as much as possible as a business enterprise. The Florida Public Education Lottery Act also created [s. 24.121, F.S.](#), which governs the allocation of revenues and expenditures of lottery tickets.

[Section 1010.70, F.S.](#), requires the Florida Department of the Lottery to determine variable percentages of the revenue generated from the sale of lottery tickets, not including application processing fees, to be deposited in to the Educational Enhancement Trust Fund (EETF). These funds are used to support the programs described beginning on page 18 as determined annually by the Florida Legislature.

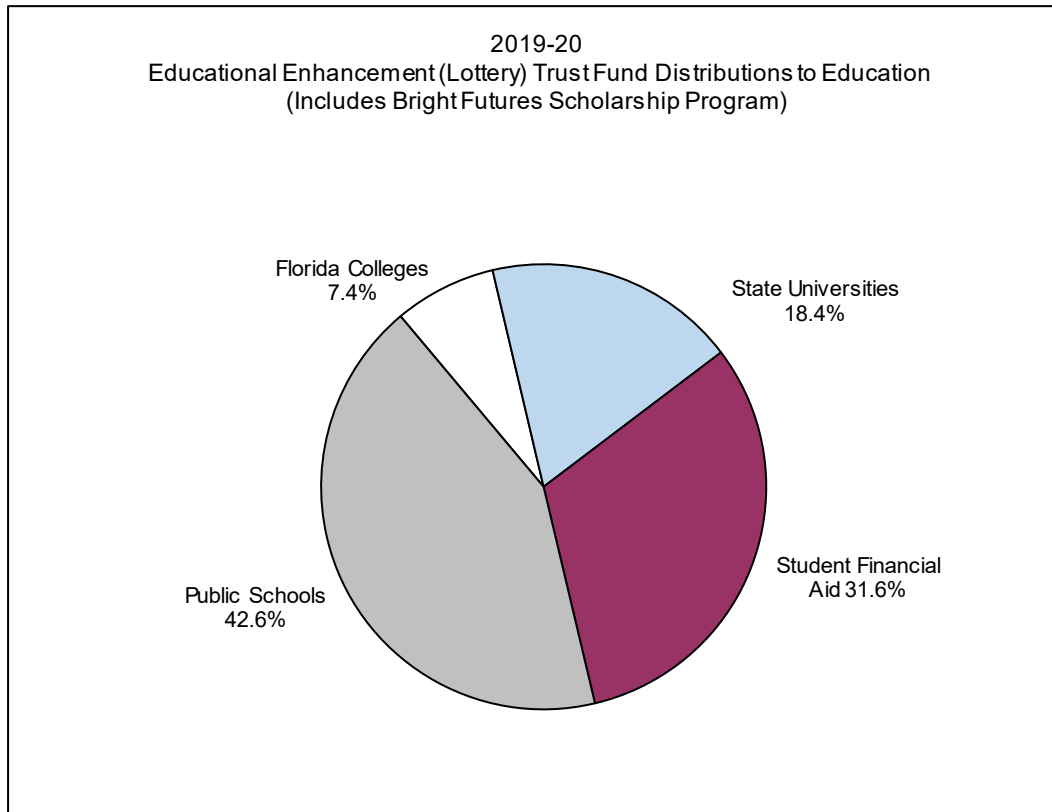
Taxes paid on slot machine revenues provide another source of proceeds for the EETF. [Section 551.106\(2\), F.S.](#), establishes a tax rate on slot machine revenues of 35 percent and requires that these proceeds go into the EETF.

In addition to transfers into the EETF from lottery proceeds, another source of revenue for the EETF is dealer collection allowances. [Section 212.12\(1\)\(d\)1., F.S.](#), states that sales and use tax dealers that are entitled to a collection allowance as compensation for keeping prescribed records, filing timely returns, conducting proper accounting and remitting taxes on time may elect to donate their collection allowance to the EETF.

The remaining funds from lottery proceeds, after deductions are made to pay prizes and for education programs, are to be used to pay the expenses of running the lottery. If any funds are left unencumbered at the end of each fiscal year, the balance must be transferred to the EETF in accordance with [s. 24.121, F.S.](#)

In [chapter 97-77, L.O.F.](#), the 1997 Legislature established the Florida Bright Futures Scholarship Program, with the intention that all components of the program be funded from the EETF ([s. 1009.53, F.S.](#)). Bright Futures appropriations are funded first, and the remainder of the funds is distributed to the education delivery systems. For 2019-20, 42.6 percent will be distributed to school districts, 7.4 percent to the Florida College System,

18.4 percent to the state universities, 28.5 percent to Bright Futures and 3.1 percent to other student financial need.



As part of the Soundly-Made, Accountable, Reasonable and Thrifty (SMART) Schools Act of 1997, the legislature established a 20-year capital outlay funding program designed to provide approximately \$2 billion in lottery funds to school districts for the construction of permanent classrooms. Under this act, the Classrooms First Program, the Effort Index and Small County Assistance programs were created to alleviate overcrowding in Florida's public schools and the need for relocatable or portable classrooms. These programs were mainly funded through the issuance of bonds supported by lottery revenues.

Other programs supported by lottery revenues include the Classrooms for Kids and the District Effort Recognition Programs, which were established by the 2003 Legislature to provide funding for class size reduction projects so that school districts could comply with the constitutional provisions for reducing class sizes. To date, the legislature has granted over \$2 billion in fixed capital outlay appropriations funded through the issuance of bonds supported by lottery revenues for this purpose.

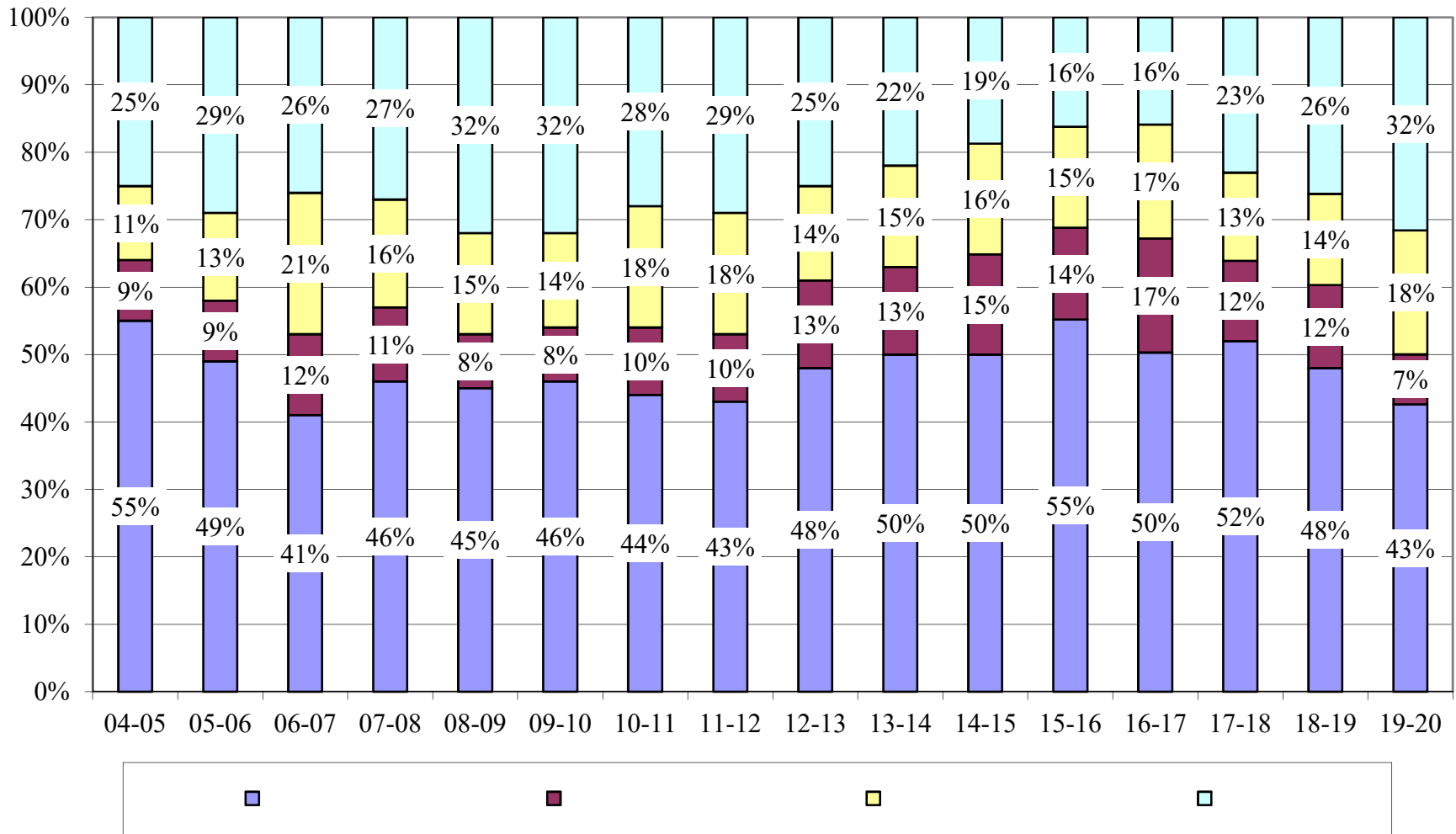
EDUCATIONAL ENHANCEMENT (LOTTERY) TRUST FUND
Appropriations By Fiscal Year

| Fiscal Year | Public Schools ⁽¹⁾ | Florida Colleges | State Universities | Other ⁽²⁾ | Total Appropriations |
|----------------|----------------------------------|---------------------|-----------------------|----------------------|-------------------------|
| 1987-88 | \$ 84,902,081 | \$ 20,160,701 | \$ 32,254,063 | \$ 7,175,081 | \$ 144,491,926 |
| 1988-89 | 258,596,804 | 38,091,575 | 24,807,400 | 6,169,402 | 327,665,181 |
| 1989-90 | 678,145,713 | 79,728,147 | 141,354,226 | 252,627,355 | 1,151,855,441 |
| 1990-91 | 748,942,205 | 88,711,838 | 142,008,682 | 22,521,915 | 1,002,184,640 |
| 1991-92 | 597,070,000 | 127,915,000 | 127,915,000 | - | 852,900,000 |
| 1992-93 | 584,000,000 | 125,200,000 | 125,200,000 | - | 834,400,000 |
| 1993-94 | 601,000,000 | 128,900,000 | 128,900,000 | - | 858,800,000 |
| 1994-95 | 664,200,000 | 142,300,000 | 142,300,000 | - | 948,800,000 |
| 1995-96 | 580,230,000 | 124,350,000 | 124,400,000 | - | 828,980,000 |
| 1996-97 | 570,290,000 | 126,210,000 | 132,210,000 | - | 828,710,000 |
| 1997-98 | 518,995,289 | 111,379,348 | 111,229,348 | 80,000,000 | 821,603,985 |
| 1998-99 | 476,290,000 | 102,055,000 | 113,832,965 | 120,000,000 | 812,177,965 |
| 1999-00 | 453,101,000 | 97,170,000 | 104,067,504 | 130,000,000 | 784,338,504 |
| 2000-01 | 554,300,000 | 102,200,000 | 102,198,463 | 162,500,000 | 921,198,463 |
| 2001-02 | 576,410,000 | 98,679,510 | 98,679,510 | 221,415,980 | 995,185,000 |
| 2002-03 | 514,471,506 | 101,346,245 | 110,028,746 | 243,653,494 | 969,499,991 |
| 2003-04 | 614,600,000 | 124,079,148 | 163,968,799 | 256,112,881 | 1,158,760,828 |
| 2004-05 | 650,039,045 | 98,900,000 | 129,771,266 | 301,451,153 | 1,180,161,464 |
| 2005-06 | 556,776,676 | 106,800,000 | 144,700,000 | 329,900,000 | 1,138,176,676 |
| 2006-07 | 599,095,913 | 175,008,007 | 297,171,620 | 367,790,000 | 1,439,065,540 |
| 2007-08 | 709,795,379 | 161,401,183 | 239,024,125 | 422,299,817 | 1,532,520,504 |
| 2008-09 | 659,166,312 | 124,770,300 | 219,373,906 | 474,142,852 | 1,477,453,370 |
| 2009-10 | 651,508,725 | 116,959,158 | 201,172,732 | 454,227,268 | 1,423,867,883 |
| 2010-11 | 569,542,395 | 126,959,158 | 230,671,087 | 373,442,455 | 1,300,615,095 |
| 2011-12 | 587,820,636 | 130,359,158 | 253,924,085 | 400,688,958 | 1,372,792,837 |
| 2012-13 | 721,106,532 | 187,372,446 | 202,786,832 | 379,818,490 | 1,491,084,300 |
| 2013-14 | 803,287,420 | 209,534,163 | 236,823,731 | 359,823,381 | 1,609,468,695 |
| 2014-15 | 871,843,513 | 259,566,406 | 286,856,489 | 326,601,507 | 1,744,867,915 |
| 2015-16 | 1,014,308,598 | 249,497,224 | 275,609,599 | 297,823,973 | 1,837,239,394 |
| 2016-17 | 910,680,335 | 306,424,522 | 306,424,522 | 287,544,574 | 1,811,073,953 |
| 2017-18 | 1,031,972,911 | 236,346,325 | 259,684,809 | 456,683,491 | 1,984,687,536 |
| 2018-19 | 1,080,409,284 | 276,770,172 | 304,622,389 | 588,821,301 | 2,250,623,146 |
| 2019-20 | 888,787,427 | 154,814,894 | 383,331,415 | 659,656,382 | 2,086,590,118 |

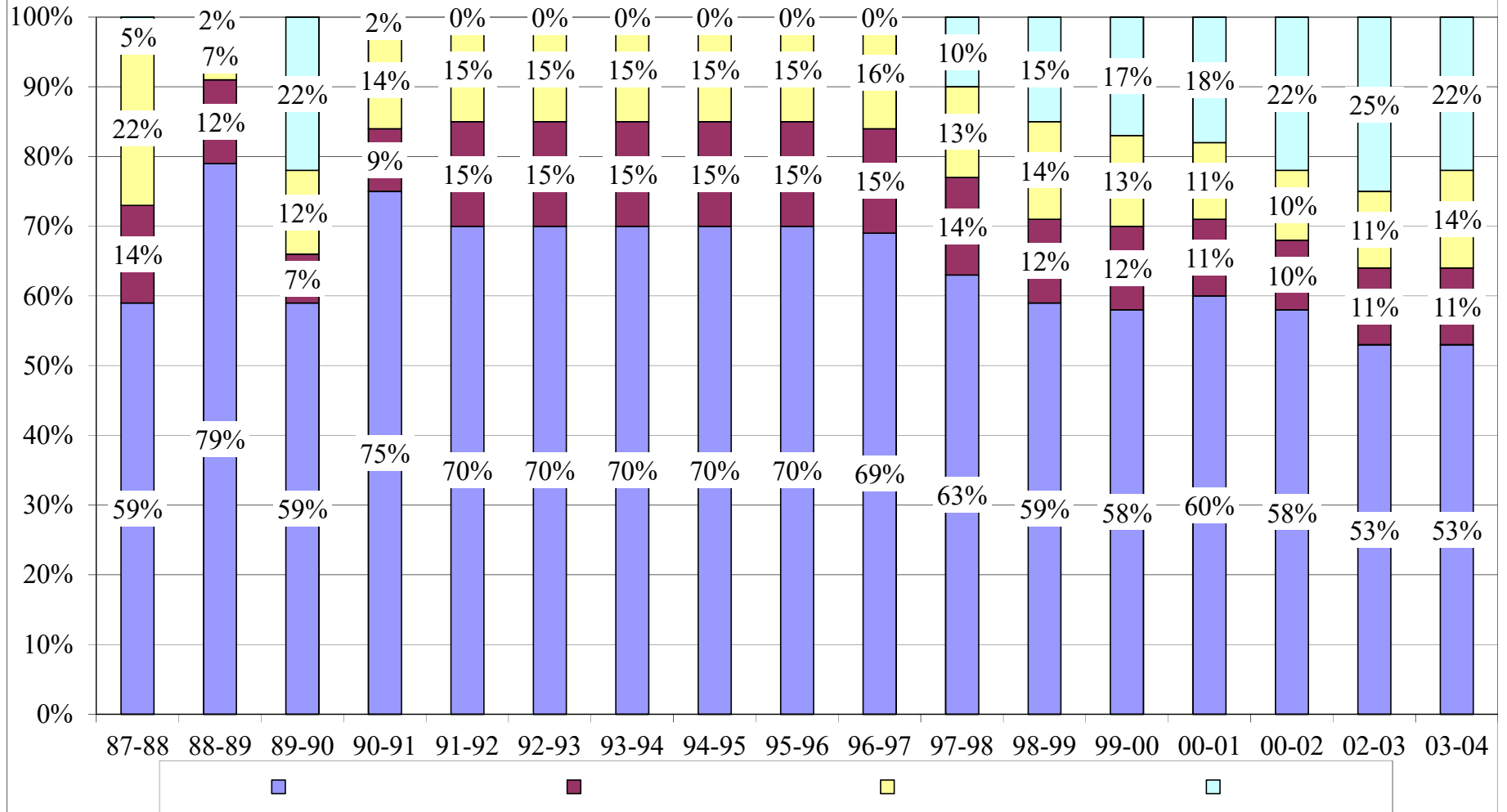
⁽¹⁾ Additional fixed capital outlay appropriations were received in the Lottery Capital Outlay Trust Fund for bonded projects to reduce class size. These appropriations were funded through the issuance of bonds supported by lottery revenues.

⁽²⁾ For 2002-03 and 2004-05, "Other" category did not consist entirely of Student Financial Aid.

Educational Enhancement (Lottery) Trust Fund Appropriations Operating and Capital Outlay



**Educational Enhancement (Lottery) Trust Fund Appropriations
Operating and Capital Outlay (Continued)**



**EDUCATIONAL ENHANCEMENT (LOTTERY) TRUST FUND
2018-19 and 2019-20 Appropriations**

| | 2018-19 | 2019-20 |
|---|------------------|------------------|
| Public Schools | | |
| Class Size Reduction | \$ 103,776,356 | \$ 103,776,356 |
| Class Size Reduction Lottery Capital Outlay Program (Debt Service) ¹ | 133,524,413 | 133,387,970 |
| Classrooms First Bond Program (Debt Service and Projects) ¹ | 101,307,519 | 82,328,303 |
| Florida Education Finance Program | 519,245,433 | 353,358,911 |
| School District Discretionary Lottery Funds ² /School Recognition | 134,582,877 | 134,582,877 |
| | 992,436,598 | 807,434,417 |
| | | |
| Workforce Education (non-FEFP) | 87,972,686 | 81,353,010 |
| | 87,972,686 | 81,353,010 |
| | | |
| Florida Colleges | | |
| Florida College System Program Funds ² | 272,175,155 | 150,218,929 |
| Educational Facilities (Debt Service) | 4,595,017 | 4,595,965 |
| | 276,770,172 | 154,814,894 |
| | | |
| State Universities | | |
| Education and General Activities ² | 274,282,404 | 342,732,781 |
| UF - Institute of Food and Agricultural Sciences | 12,533,877 | 17,079,571 |
| University of South Florida Medical Center | 9,349,672 | 12,740,542 |
| University of Florida Health Center | 5,796,416 | 7,898,617 |
| Florida State University Medical School | 605,115 | 824,574 |
| Educational Facilities (Debt Service) | 2,054,905 | 2,055,330 |
| | 304,622,389 | 383,331,415 |
| | | |
| Student Financial Aid | | |
| Florida's Bright Futures Scholarship Program | 519,058,661 | 595,143,167 |
| First Generation in College Matching Grant Program | 0 | 0 |
| Other State Student Financial Aid | 69,762,640 | 64,513,215 |
| | 588,821,301 | 659,656,382 |
| | | |
| Total Department | \$ 2,250,623,146 | \$ 2,086,590,118 |

1. Additional fixed capital outlay appropriations were received in the Lottery Capital Outlay Trust Fund for projects to reduce class size. These appropriations are funded through the issuance of bonds supported by lottery revenues. The debt service reflects payments on the bonds.
2. District School Boards, Florida College System Board of Trustees and State University System Board of Trustees determine the expenditure of these funds to enhance education.

EDUCATIONAL ENHANCEMENT (LOTTERY) TRUST FUND
2015-16, 2016-17 and 2017-18 Appropriations

| | 2015-16 | 2016-17 | 2017-18 |
|---|-------------------------|-------------------------|-------------------------|
| Public Schools | | | |
| Class Size Reduction | \$ 103,776,356 | \$ 103,776,356 | \$ 103,776,356 |
| Class Size Reduction Lottery Capital Outlay Program (Debt Service) ¹ | 151,262,548 | 151,265,624 | 143,845,811 |
| Classrooms First Bond Program (Debt Service and Projects) ¹ | 155,820,162 | 155,786,420 | 170,305,246 |
| Florida Education Finance Program | 219,369,431 | 276,772,458 | 404,555,678 |
| School District Discretionary Lottery Funds ² /School Recognition | <u>134,582,877</u> | <u>134,582,877</u> | <u>134,582,877</u> |
| | 764,811,374 | 822,183,735 | 957,065,968 |
| | | | |
| Workforce Education (non-FEFP) | <u>79,157,830</u> | <u>88,496,600</u> | <u>74,906,943</u> |
| | 79,157,830 | 88,496,600 | 74,906,943 |
| Florida Colleges | | | |
| Florida College System Program Funds ² | 244,903,227 | 273,796,073 | 231,751,579 |
| Educational Facilities (Debt Service) | 4,593,997 | 4,595,500 | 4,594,746 |
| | <u>249,497,224</u> | <u>278,391,573</u> | <u>236,346,325</u> |
| State Universities | | | |
| Education and General Activities ² | 245,270,069 | 276,084,320 | 229,344,945 |
| UF - Institute of Food and Agricultural Sciences | 12,533,877 | 12,533,877 | 12,533,877 |
| University of South Florida Medical Center | 9,349,672 | 9,349,672 | 9,349,672 |
| University of Florida Health Center | 5,796,416 | 5,796,416 | 5,796,416 |
| Florida State University Medical School | 605,115 | 605,115 | 605,115 |
| Educational Facilities (Debt Service) | 2,054,450 | 2,055,122 | 2,054,784 |
| | <u>275,609,599</u> | <u>306,424,522</u> | <u>259,684,809</u> |
| Student Financial Aid | | | |
| Florida's Bright Futures Scholarship Program | 239,800,000 | 217,366,468 | 397,282,030 |
| First Generation in College Matching Grant Program | 5,308,663 | 5,308,663 | 0 |
| Other State Student Financial Aid | 52,715,310 | 64,869,443 | 59,401,461 |
| | <u>297,823,973</u> | <u>287,544,574</u> | <u>456,683,491</u> |
| | | | |
| Total Department | <u>\$ 1,666,900,000</u> | <u>\$ 1,783,041,004</u> | <u>\$ 1,984,687,536</u> |

1. Additional fixed capital outlay appropriations were received in the Lottery Capital Outlay Trust Fund for projects to reduce class size. These appropriations are funded through the issuance of bonds supported by lottery revenues. The debt service reflects payments on the bonds.
2. District School Boards, Florida College System Board of Trustees and State University System Board of Trustees determine the expenditure of these funds to enhance education.

EDUCATIONAL ENHANCEMENT (LOTTERY) TRUST FUND
2012-13, 2013-14 and 2014-15 Appropriations

| | 2012-13 | 2013-14 | 2014-15 |
|---|-------------------------|-------------------------|-------------------------|
| Public Schools | | | |
| Class Size Reduction | \$ 103,776,356 | \$ 103,776,356 | \$ 103,776,356 |
| Class Size Reduction Lottery Capital Outlay Program (Debt Service) ¹ | 154,482,900 | 153,806,836 | 152,836,215 |
| Classrooms First Bond Program (Debt Service and Projects) ¹ | 156,801,400 | 156,011,746 | 155,882,941 |
| Florida Education Finance Program | 122,740,767 | 197,752,820 | 242,352,820 |
| School District Discretionary Lottery Funds ² /School Recognition | <u>134,582,877</u> | <u>134,582,877</u> | <u>134,582,877</u> |
| | 672,384,300 | 745,930,635 | 789,431,209 |
| | | | |
| Workforce Education (non-FEFP) | <u>48,722,232</u> | <u>57,356,785</u> | <u>82,412,304</u> |
| | 48,722,232 | 57,356,785 | 82,412,304 |
| Florida Colleges | | | |
| Florida College System Program Funds ² | 180,808,060 | 204,938,935 | 254,972,113 |
| Educational Facilities (Debt Service) | <u>6,564,386</u> | <u>4,595,228</u> | <u>4,594,293</u> |
| | 187,372,446 | 209,534,163 | 259,566,406 |
| State Universities | | | |
| Education and General Activities ² | 171,566,138 | 206,483,766 | 256,516,943 |
| UF - Institute of Food and Agricultural Sciences | 12,533,877 | 12,533,877 | 12,533,877 |
| University of South Florida Medical Center | 9,349,672 | 9,349,672 | 9,349,672 |
| University of Florida Health Center | 5,796,416 | 5,796,416 | 5,796,416 |
| Florida State University Medical School | 605,115 | 605,115 | 605,115 |
| Educational Facilities (Debt Service) | <u>2,935,614</u> | <u>2,054,885</u> | <u>2,054,466</u> |
| | 202,786,832 | 236,823,731 | 286,856,489 |
| Student Financial Aid ³ | | | |
| Florida's Bright Futures Scholarship Program | 329,408,935 | 309,413,826 | 266,191,952 |
| First Generation in College Matching Grant Program | 5,308,663 | 5,308,663 | 5,308,663 |
| Other State Student Financial Aid | <u>45,100,892</u> | <u>45,100,892</u> | <u>55,100,892</u> |
| | 379,818,490 | 359,823,381 | 326,601,507 |
| | | | |
| Total Department | <u>\$ 1,491,084,300</u> | <u>\$ 1,609,468,695</u> | <u>\$ 1,744,867,915</u> |

1. Additional fixed capital outlay appropriations were received in the Lottery Capital Outlay Trust Fund for projects to reduce class size. These appropriations are funded through the issuance of bonds supported by lottery revenues. The debt service reflects payments on the bonds.
2. District School Boards, Florida College System Board of Trustees and State University System Board of Trustees determine the expenditure of these funds to enhance education.
3. The 2014-15 Student Financial Aid total does not include the \$2,000,000 budget amendment funds allocated to the Benacquisto Scholarship Program (formerly referred to as the Florida National Merit Scholars Incentive Program).

EDUCATIONAL ENHANCEMENT (LOTTERY) TRUST FUND
2009-10, 2010-11 and 2011-12 Appropriations

| | <u>2009-10</u> | <u>2010-11</u> | <u>2011-12</u> |
|---|-------------------------|-------------------------|-------------------------|
| Public Schools | | | |
| Class Size Reduction | \$ 189,849,480 | \$ 103,776,356 | \$ 103,776,356 |
| Class Size Reduction Lottery Capital Outlay Program (Debt Service) ¹ | 151,922,482 | 154,721,252 | 154,883,241 |
| Classrooms First Bond Program (Debt Service and Projects) ¹ | 166,957,717 | 164,766,967 | 162,109,596 |
| Florida Education Finance Program | 9,036,490 | 9,036,490 | 12,327,001 |
| School District Discretionary Lottery Funds ² /School Recognition | 129,914,030 | 129,914,030 | 119,596,643 |
| | <u>647,680,199</u> | <u>562,215,095</u> | <u>552,692,837</u> |
| | | | |
| Workforce Education (non-FEFP) | <u>3,828,526</u> | <u>7,327,300</u> | <u>35,127,799</u> |
| | 3,828,526 | 7,327,300 | 35,127,799 |
| Community Colleges | | | |
| Community College Lottery Funds ² | <u>116,959,158</u> | <u>126,959,158</u> | <u>130,359,158</u> |
| | 116,959,158 | 126,959,158 | 130,359,158 |
| State Universities | | | |
| Education and General Activities ² | 173,816,968 | 203,274,204 | 225,687,387 |
| UF - Institute of Food and Agricultural Sciences | 12,533,877 | 12,533,877 | 12,533,877 |
| University of South Florida Medical Center | 8,436,061 | 8,461,475 | 9,301,290 |
| University of Florida Health Center | 5,796,416 | 5,796,416 | 5,796,416 |
| Florida State University Medical School | <u>589,410</u> | <u>605,115</u> | <u>605,115</u> |
| | 201,172,732 | 230,671,087 | 253,924,085 |
| Student Financial Aid | | | |
| Florida's Bright Futures Scholarship Program | 418,878,452 | 338,367,564 | 350,000,000 |
| First Generation in College Matching Grant Program | 6,848,120 | 6,574,195 | 5,588,066 |
| Other State Student Financial Aid | <u>28,500,696</u> | <u>28,500,696</u> | <u>45,100,892</u> |
| | 454,227,268 | 373,442,455 | 400,688,958 |
| | | | |
| Total Department | <u>\$ 1,423,867,883</u> | <u>\$ 1,300,615,095</u> | <u>\$ 1,372,792,837</u> |

1. Additional fixed capital outlay appropriations were received in the Lottery Capital Outlay Trust Fund for projects to reduce class size. These appropriations are funded through the issuance of bonds supported by lottery revenues. The debt service reflects payments on the bonds.
2. District School Boards, Florida College System Board of Trustees and State University System Board of Trustees determine the expenditure of these funds to enhance education.

EDUCATIONAL ENHANCEMENT (LOTTERY) TRUST FUND
2006-07, 2007-08 and 2008-09 Appropriations

| | 2006-07 | 2007-08 | 2008-09 |
|---|-------------------------|-----------------------------|-----------------------------|
| Public Schools | | | |
| Class Size Reduction | \$ 75,718,007 | \$ 144,185,962 ³ | \$ 114,354,421 ⁴ |
| Class Size Reduction Lottery Capital Outlay Program (Debt Service) ¹ | 100,310,506 | 119,710,506 ³ | 155,000,000 |
| Classrooms First Bond Program (Debt Service and Projects) ¹ | 167,885,407 | 166,892,742 | 166,934,217 |
| District Cost Differential (DCD) Transition Supplement | - | 15,000,000 | - |
| Excellent Teaching | - | 3,000,000 ³ | 3,000,000 ⁴ |
| School District Discretionary Lottery Funds ² | 125,894,447 | 100,538,358 ³ | 65,474,309 ⁴ |
| School Recognition/Merit Schools | 129,287,546 | 157,587,811 | 147,235,894 |
| School Safety/Emergency Preparedness | - | 2,880,000 ³ | - |
| | <u>599,095,913</u> | <u>709,795,379</u> | <u>651,998,841</u> |
| | | | |
| Workforce Education (non-FEFP) | - | - | 7,167,471 ⁴ |
| | <u>-</u> | <u>-</u> | <u>7,167,471</u> |
| Community Colleges | | | |
| Community College Lottery Funds ² | 120,000,000 | 112,252,800 ³ | 124,770,300 ⁴ |
| Critical Jobs Initiative | 20,000,000 | - | - |
| Facilities Matching Program | 35,008,007 | - | - |
| Florida's Two Plus Two Public and Private Partnerships | - | 489,600 ³ | - |
| Program Challenge Grants | - | 48,658,783 | - |
| | <u>175,008,007</u> | <u>161,401,183</u> | <u>124,770,300</u> |
| State Universities | | | |
| Education and General Activities ² | 157,843,843 | 149,410,324 ³ | 195,717,966 ⁴ |
| UF - Institute of Food and Agricultural Sciences | 9,320,592 | 8,371,768 ³ | 11,365,268 ⁴ |
| University of South Florida Medical Center | 2,698,719 | 2,590,770 ³ | 4,241,041 |
| University of Florida Health Center | 7,165,799 | 4,311,167 ³ | 7,026,684 |
| Florida State University Medical School | 3,132 | 3,132 | 1,022,947 |
| Facility Enhancement Challenge Grants | 55,971,620 | - | - |
| Program Challenge Grants | 64,167,915 | 74,336,964 | - |
| | <u>297,171,620</u> | <u>239,024,125</u> | <u>219,373,906</u> |
| | | | |
| Student Financial Aid | | | |
| Florida's Bright Futures Scholarship Program | 346,342,906 | 383,185,153 ³ | 435,275,538 ⁴ |
| First Generation in College Matching Grant Program | - | 8,245,000 ³ | 7,997,650 |
| Other State Student Financial Aid | 21,447,094 | 30,869,664 | 30,869,664 |
| | <u>367,790,000</u> | <u>422,299,817</u> | <u>474,142,852</u> |
| | | | |
| Total Department | <u>\$ 1,439,065,540</u> | <u>\$ 1,532,520,504</u> | <u>\$ 1,477,453,370</u> |

1. Additional fixed capital outlay appropriations were received in the Lottery Capital Outlay Trust Fund for projects to reduce class size. These appropriations are funded through the issuance of bonds supported by lottery revenues. The debt service reflects payments on the bonds.
2. District School Boards, Community College Board of Trustees and State University System Board of Trustees determine the expenditure of these funds to enhance education.
3. Changes in original appropriations were made in 2007-08 Special Session C and the Special Appropriations Act for Fiscal Year 2007-08. Please see chapter 2007-326, L.O.F., and chapter 2008-1, L.O.F.
4. Changes in original appropriations were made in 2008-09 Special Session A, some of which were vetoed by the Governor. Additional changes to the appropriations were made in the September 10, 2008, Legislative Budget Commission Meeting, and the June 17, 2009, Legislative Budget Commission Meeting.

EDUCATIONAL ENHANCEMENT (LOTTERY) TRUST FUND
2003-04, 2004-05 and 2005-06 Appropriations

| | <u>2003-04</u> | <u>2004-05</u> | <u>2005-06</u> |
|---|--------------------------------|--------------------------|-------------------------|
| Public Schools | | | |
| Assistance to Low-Performing Schools | \$ 998,000 | \$ 5,500,000 | \$ - |
| Class Size Reduction | 80,000,007 | 97,904,975 | 75,718,007 |
| Class Size Reduction Lottery Capital Outlay Program (Debt Service) ¹ | 56,000,000 | 43,902,077 | 43,902,077 |
| Classrooms First Bond Program (Debt Service and Projects) ¹ | 169,000,000 | 169,000,000 | 169,000,000 |
| Education Partnerships | - | 4,000,000 | - |
| Excellent Teaching | 475,000 | - | - |
| Florida Information Resource Network/Reading | - | 7,850,221 | - |
| Florida School for the Deaf and Blind | 130,000 | - | - |
| Instructional Technology | - | 1,000,000 | - |
| K-8 Virtual Education | 4,800,000 | 4,640,000 | - |
| Mentoring/Student Assistance Initiatives | 12,250,000 | 13,895,000 | - |
| Public School Technology | 2,250,000 | - | - |
| Reading Programs | - | 38,149,779 | - |
| School and Instructional Enhancements | 160,000 | 660,000 | - |
| School District Discretionary Lottery Funds ² | 123,449,842 | 103,449,842 | 146,240,454 |
| School Recognition/Merit Schools | 140,000,000 | 160,000,000 | 117,209,388 |
| Supplemental Academic Instruction | 25,000,000 | - | - |
| Teacher Professional Development | <u>87,151</u> | <u>87,151</u> | <u>-</u> |
| | 614,600,000 | 650,039,045 | 552,069,926 |
| Workforce Education | | | |
| Critical Jobs Initiative | <u>-</u> | <u>-</u> | <u>4,706,750</u> |
| | - | - | 4,706,750 |
| Community Colleges | | | |
| Community College Lottery Funds ² | 93,900,000 | 98,900,000 | 101,100,000 |
| Critical Jobs Initiative | - | - | 5,700,000 |
| Facilities Matching Program | - | - | - |
| Program Challenge Grants | <u>30,179,148</u> ³ | <u>-</u> | <u>-</u> |
| | 124,079,148 | 98,900,000 | 106,800,000 |
| State Universities | | | |
| Education and General Activities ² | 86,731,478 | 111,473,560 | 122,286,758 |
| UF - Institute of Food and Agricultural Sciences | 5,087,910 | 9,563,810 | 8,720,592 |
| University of South Florida Medical Center | 2,601,539 | 2,698,719 | 2,698,719 |
| University of Florida Health Center | 4,132,041 | 4,490,799 | 4,490,799 |
| Florida State University Medical School | 3,132 | 3,132 | 3,132 |
| Facility Enhancement Challenge Grants | - | - | - |
| Challenge Grants | <u>65,412,699</u> ³ | <u>1,541,246</u> | <u>6,500,000</u> |
| | 163,968,799 | 129,771,266 | 144,700,000 |
| State Board of Education | | | |
| Assessment and Evaluation | <u>-</u> | <u>5,000,000</u> | <u>-</u> |
| Total | - | 5,000,000 | - |
| Student Financial Aid | | | |
| Florida's Bright Futures Scholarship Program | 235,688,631 | 275,989,784 ⁴ | 311,772,580 |
| Other State Student Financial Aid | <u>20,424,250</u> | <u>20,461,369</u> | <u>18,127,420</u> |
| | 256,112,881 | 296,451,153 | 329,900,000 |
| Total Department | <u>\$ 1,158,760,828</u> | <u>\$ 1,180,161,464</u> | <u>\$ 1,138,176,676</u> |

1. Additional fixed capital outlay appropriations were received in the Lottery Capital Outlay Trust Fund for bonded projects to reduce class size appropriations are funded through the issuance of bonds supported by lottery revenues. The debt service reflects payments on the bonds.
2. District School Boards, Community College Board of Trustees and State University System Board of Trustees determine the expenditure of the enhance education.
3. Includes \$6,179,148 for Community Colleges and \$23,968,779 for Universities for Challenge Grants from House Bill 43E.
4. In 2004-05, a \$7,883,680 budget amendment to Bright Futures was approved.

EDUCATIONAL ENHANCEMENT (LOTTERY) TRUST FUND
1999-00, 2000-01, 2001-02 and 2002-03 Appropriations

| | 1999-00 | 2000-01 | 2001-02 | 2002-03 |
|---|-----------------------|-----------------------|-------------------------|-------------------------|
| Public Schools | | | | |
| School District Discretionary Lottery Funds ¹ | \$ 151,176,000 | \$ 190,125,000 | \$ 195,250,000 | \$ 184,155,000 |
| School Recognition/Merit Schools ² | 15,000,000 | 60,000,000 | 113,500,000 | 122,770,000 |
| Classrooms First Bond Program (Debt Service and Projects) | 180,000,000 | 180,000,000 | 180,000,000 | 180,000,000 |
| Assistance to Low Performing Schools | - | 17,250,000 | 3,776,000 ³ | - |
| Pre-School Coalition Incentive Funds | 2,085,000 | 2,085,000 | - | - |
| School Readiness Partnership | 1,075,000 | 1,075,000 | - | - |
| Pre-School Projects | 103,765,000 | 103,765,000 | - | - |
| Public School Technology | - | - | 62,400,000 | - |
| Reading Programs | - | - | - | - |
| Mentoring/Student Assistance Initiatives | - | - | 12,390,000 ³ | 12,300,000 ⁴ |
| Communities in Schools | - | - | 1,000,000 | - |
| Teacher Professional Development | - | - | - | - |
| School and Instructional Enhancements | - | - | 489,790 ³ | - |
| Teacher Training | - | - | 7,354,210 | - |
| Excellent Teaching | - | - | - | 10,246,506 |
| Extended School Year | - | - | - | 5,000,000 |
| Exceptional Education | - | - | - | - |
| Teacher Recruitment Campaign | - | - | 250,000 | - |
| Total | <u>453,101,000</u> | <u>554,300,000</u> | <u>576,410,000</u> | <u>514,471,506</u> |
| Community Colleges | | | | |
| Community College Lottery Funds ¹ | 95,170,000 | 102,200,000 | 94,687,500 | 92,900,000 |
| Performance Based Incentive Programs | 2,000,000 | - | - | - |
| Information Technology Enhancement Grants | - | - | 1,992,010 | 8,446,245 |
| Library Automation | - | - | 2,000,000 | - |
| Total | <u>97,170,000</u> | <u>102,200,000</u> | <u>98,679,510</u> | <u>101,346,245</u> |
| State Universities | | | | |
| Education and General Activities ¹ | 75,809,222 | 89,509,540 | 81,849,166 | 84,762,878 |
| UF-Institute of Food and Agricultural Sciences | 9,047,048 | 5,322,263 | 5,445,038 | 5,087,910 |
| University of South Florida Medical Center | 4,224,159 | 2,898,477 | 2,822,040 | 2,601,539 |
| University of Florida Health Center | 8,089,571 | 4,468,183 | 4,571,256 | 4,132,041 |
| Florida State University Medical School | - | - | - | 3,132 |
| I-4 Corridor/High Technology Research | - | - | - | 5,000,000 |
| Board of Governors - Challenge Grants | 6,897,504 | - | 3,992,010 | 8,441,246 |
| Total | <u>104,067,504</u> | <u>102,198,463</u> | <u>98,679,510</u> | <u>110,028,746</u> |
| State Board of Education | | | | |
| Bright Futures Testing Program | - | - | - | 7,905,600 |
| Total | <u>-</u> | <u>-</u> | <u>-</u> | <u>7,905,600</u> |
| Student Financial Aid | | | | |
| Florida's Bright Futures Scholarship Program | 130,000,000 | 143,100,000 | 202,000,000 | 218,970,000 |
| Other State Student Financial Aid | - | 19,400,000 | 19,415,980 | 16,777,894 |
| Total | <u>130,000,000</u> | <u>162,500,000</u> | <u>221,415,980</u> | <u>235,747,894</u> |
| Total Department | <u>\$ 784,338,504</u> | <u>\$ 921,198,463</u> | <u>\$ 995,185,000</u> | <u>\$ 969,499,991</u> |

1 District School Boards, Community College Board of Trustees and State University System Board of Trustees determine the expenditure of these funds to enhance education.

2. In 1999-00, an additional \$15 million budget amendment was approved.
 In 2000-01, an additional \$24 million budget amendment was approved.

3. Assistance to Low Performing Schools, vetoed \$3,280,000; Reading Programs, vetoed \$1,731,428; Mentoring/Student Assistance Initiatives, vetoed \$1,425,000; Teacher Professional Development, vetoed \$1,250,000; School and Instructional Enhancements, vetoed \$6,843,572; Exceptional Education, vetoed \$600,000. The net decrease to the original appropriation was \$15,130,000, for an adjusted appropriation total of \$930,870,000.

4. Mentoring/Student Assistance Initiatives, vetoed \$300,000.

EDUCATIONAL ENHANCEMENT (LOTTERY) TRUST FUND
1995-96, 1996-97, 1997-98 and 1998-99 Appropriations
1997-98 Revised Pursuant to House Bill 17-A

| | 1995-96 | 1996-97 | 1997-98 | 1998-99 |
|---|-----------------------|-----------------------|-----------------------|-----------------------|
| Public Schools | | | | |
| School District Discretionary Lottery Funds ¹ | \$ 476,062,645 | \$ 463,290,000 | \$ 232,070,289 | \$ 183,975,000 |
| School Recognition/Merit Schools | - | - | - | 5,390,000 |
| Classrooms First Bond Program (Debt Service and Projects) | - | - | 180,000,000 | 180,000,000 |
| Coalition Incentive Funds | - | - | - | 3,000,000 |
| Technology Matching Grants | - | - | ² | - |
| Pre-School Projects | 104,167,355 | 107,000,000 | 106,925,000 | 103,925,000 |
| Total | <u>580,230,000</u> | <u>570,290,000</u> | <u>518,995,289</u> | <u>476,290,000</u> |
| Community Colleges | | | | |
| Community College Lottery Funds ¹ | 116,550,000 | 120,660,000 | 109,229,348 | 98,900,000 |
| Community College Endowment | 2,750,000 | 2,750,000 | - | - |
| Nursing Education Challenge Grant Fund | 800,000 | 800,000 | - | - |
| Incentive Grants - Expanded Program | 2,250,000 | - | - | - |
| Endowment Matching Fund | - | - | - | 1,155,000 |
| Performance Based Incentive Program | 2,000,000 | 2,000,000 | 2,000,000 | 2,000,000 |
| Transfer to FIRN | - | - | 150,000 | - |
| Total | <u>124,350,000</u> | <u>126,210,000</u> | <u>111,379,348</u> | <u>102,055,000</u> |
| State Universities | | | | |
| State University System Lottery Funds ¹ | 122,150,000 | 127,210,000 | - | - |
| Education and General Activities ¹ | - | - | 88,167,837 | 78,065,877 |
| UF-Institute of Food and Agriculture Sciences | - | - | 9,718,244 | 9,628,107 |
| University of South Florida Medical Center | - | - | 4,578,866 | 4,531,456 |
| University of Florida Health Center | - | - | 8,764,401 | 8,674,560 |
| Challenge Grants | 2,250,000 | 5,000,000 | - | 12,932,965 |
| Total | <u>124,400,000</u> | <u>132,210,000</u> | <u>111,229,348</u> | <u>113,832,965</u> |
| Student Financial Aid | | | | |
| Florida's Bright Futures Scholarship Program | - | - | 75,000,000 | 120,000,000 |
| Prepaid Tuition Scholarships | - | - | 2,000,000 | - |
| Minority Teacher Scholarship Program | - | - | 3,000,000 | - |
| Total | <u>-</u> | <u>-</u> | <u>80,000,000</u> | <u>120,000,000</u> |
| Total Department | <u>\$ 828,980,000</u> | <u>\$ 828,710,000</u> | <u>\$ 821,603,985</u> | <u>\$ 812,177,965</u> |

1. District School Boards, Community College Board of Trustees and State University System Board of Trustees determine the expenditure of these funds to enhance education.

2. \$5,000,000 Vetoed

Notes:

Due to a revenue shortfall in 1995-96, appropriations were reduced as follows: Public Schools, \$3,080,000; Community Colleges, \$660,000; and State Universities, \$660,000.

Due to a revenue shortfall in 1996-97, appropriations were reduced as follows: Public Schools, \$10,010,000; Community Colleges, \$2,145,000; and State Universities, \$2,145,000.

EDUCATIONAL ENHANCEMENT (LOTTERY) TRUST FUND
1991-92, 1992-93, 1993-94 and 1994-95 Appropriations

| | 1991-92 | 1992-93 | 1993-94 | 1994-95 |
|--|------------------------------|------------------------------|------------------------------|------------------------------|
| Public Schools | | | | |
| School District Discretionary Lottery Funds ¹ | \$ 505,639,799 | \$ 505,427,645 | \$ 483,527,645 | \$ 502,032,645 |
| Instructional Strategies Enhancement | 8,857,846 | - | - | - |
| High Performance Incentive Program | 4,000,000 | - | - | - |
| Performance Based Incentive Program | - | - | - | 2,000,000 |
| Public School Technology | - | - | 38,900,000 | 56,000,000 |
| Pre-School Projects | 78,572,355 | 78,572,355 | 78,572,355 | 104,167,355 |
| Total | <u>597,070,000</u> | <u>584,000,000</u> | <u>601,000,000</u> | <u>664,200,000</u> |
| Community Colleges | | | | |
| Community College Lottery Funds ¹ | 124,365,000 | 121,650,000 | 123,851,436 | 125,782,430 |
| Library Resources | - | - | - | 5,429,471 |
| Auxiliary Learning Aids | - | - | - | 998,700 |
| Endowment Matching Fund | 2,750,000 | 2,750,000 | 2,750,000 | 5,500,000 |
| Library Automation | - | - | 1,498,564 | 989,399 |
| Performance Based Incentive Program | - | - | - | 2,000,000 |
| Nursing Education Challenge Grant Fund | 800,000 | 800,000 | 800,000 | 1,600,000 |
| Total | <u>127,915,000</u> | <u>125,200,000</u> | <u>128,900,000</u> | <u>142,300,000</u> |
| State Universities | | | | |
| State University System Lottery Funds ¹ | 124,515,000 | 113,641,421 | 104,541,421 | 128,230,000 |
| Library Resources | - | 3,258,579 | 3,258,579 | 4,565,000 |
| Transfer to Major Gifts Trust Fund | - | - | 2,200,000 | 3,564,920 |
| Transfer to Eminent Scholars Trust Fund | - | - | 2,200,000 | 3,564,920 |
| Student Financial Aid | - | 8,300,000 | 8,300,000 | - |
| Facility Enhancement Challenge Grant | 3,400,000 | - | 8,400,000 | 2,375,160 |
| Total | <u>127,915,000</u> | <u>125,200,000</u> | <u>128,900,000</u> | <u>142,300,000</u> |
| Total Department | <u><u>\$ 852,900,000</u></u> | <u><u>\$ 834,400,000</u></u> | <u><u>\$ 858,800,000</u></u> | <u><u>\$ 948,800,000</u></u> |

1. District School Boards, Community College Boards of Trustees and State University System Boards of Trustees determine the expenditure of these funds to enhance education.

Note: Due to a revenue shortfall for 1994-95, appropriations were reduced as follows: Public Schools, \$15,890,000; Community Colleges, \$3,405,000; and State Universities, \$3,405,000.

**EDUCATIONAL ENHANCEMENT (LOTTERY) TRUST FUND
1989-90 and 1990-91 Appropriations**

| | 1989-90 | 1990-91 |
|---|----------------|----------------|
| Public Schools | | |
| Florida Education Finance Program | \$ 456,234,934 | \$ 534,569,316 |
| Transportation | 18,000,000 | 14,795,770 |
| School Bus Replacement | 20,000,000 | 15,500,000 |
| Instructional Materials | 10,000,000 | 22,622,442 |
| Compensatory Education | 639,822 | 2,601,879 |
| Diagnostic and Learning Resource Centers | 33,262 | 134,100 |
| Community Schools | 1,300,000 | 1,300,000 |
| Student Development Services | 621,562 | 672,831 |
| School Volunteer Program | 100,000 | 102,070 |
| PREP (K-3 Improvement) | 13,069,151 | 15,230,461 |
| Writing Skills | 590,562 | 603,446 |
| Summer Inservice Institutes | 11,250,000 | 812,500 |
| Safe Schools/School Resource Officers | 362,237 | 4,630,825 |
| Regional Centers of Excellence | 425,000 | 555,699 |
| School Principals Inservice Training | 394,060 | - |
| Teachers As Advisors | 646,132 | 678,439 |
| Dropout Prevention | 8,194,153 | 4,596,756 |
| Middle Childhood (PRIME) | 31,327,205 | 33,755,539 |
| Merit Schools | 10,000,000 | - |
| In-School Child Care | 1,500,000 | 1,389,248 |
| Elementary School Foreign Language | 2,754,396 | 2,684,336 |
| Pre-School Projects | 49,187,748 | 47,268,878 |
| Math/Science/Computer Plan | 350,000 | 300,000 |
| Instructional Technology | 11,000,000 | 21,480,020 |
| Middle School Advisement | 1,976,000 | 2,846,800 |
| Literacy Centers | 300,000 | 300,000 |
| Curriculum Development and Renewal | 335,000 | - |
| Education Improvement Grants | 225,000 | 100,000 |
| Education/Business Cooperation | 1,280,000 | 1,860,000 |
| Restructuring Learning | 750,000 | 1,000,000 |
| Model Schools Consortium | 2,000,000 | - |
| International Science Fair | 100,000 | - |
| Governor's Summer Colleges Program | 250,000 | 231,541 |
| Interagency Student Services/Cities in Schools | 500,000 | - |
| High Performance Incentive Program | 10,000,000 | 2,924,732 |
| Panhandle Area Ed Coop | 250,000 | - |
| School Board Training | 125,000 | - |
| Summer Science Teacher Training | 500,000 | - |
| Math & Science Stipends | 750,000 | 500,000 |
| Library Media Materials | 10,785,614 | 10,452,341 |
| Teacher of the Year | 29,250 | - |
| School Related Person of the Year | 9,625 | - |
| Blueprint for Career Preparation | - | 2,329,736 |
| Pre-Teachers and Teacher Education Pilot Projects | - | 112,500 |
| Total | 678,145,713 | 748,942,205 |
| Community Colleges | | |
| Community College Program Fund | 47,369,298 | 63,833,981 |
| Endowment Matching Fund | 2,750,000 | 2,750,000 |
| General Office | 30,000 | 160,000 |
| Instructional Equipment | 4,841,689 | 4,841,689 |
| Sunshine State Skills Program | 3,931,202 | 1,506,881 |
| Community College M.L.S. | 40,000 | - |
| Library Automation | 3,000,000 | 3,000,000 |
| Literacy Centers | 400,000 | 500,000 |
| Deferred Maintenance | 2,500,000 | 2,500,000 |
| Quality Improvements ¹ | 3,000,000 | 2,000,000 |
| Learning Resource Centers Materials | 6,000,000 | 6,000,000 |
| Program Reviews | 4,515,958 | 475,000 |
| Technology Transfer Centers | 650,000 | - |
| Nursing Education Challenge Grant Fund | 500,000 | 800,000 |
| Small and Minority Business Entrepreneurial Center | 100,000 | - |
| Miami Book Fair International | 100,000 | 100,000 |
| Microcomputer Education for the Disabled | - | 50,000 |
| Appleton Museum - Central Florida Community College | - | 194,287 |
| Total | 79,728,147 | 88,711,838 |
| State Universities | | |
| Education and General Activities | 86,581,022 | 112,540,656 |
| UF - Institute of Food and Agricultural Sciences | 3,726,443 | 3,250,572 |
| UF - Health Center | 5,505,659 | 3,487,178 |
| USF - Medical Center | 1,186,034 | 1,725,358 |
| General Office | 35,349,551 | 18,432,637 |
| Salary Increases | 6,433,236 | - |
| Teacher Education Centers | 2,572,281 | 2,572,281 |
| Total | 141,354,226 | 142,008,682 |

1. College Level Academic Skills Test (CLAST)

(continued)

EDUCATIONAL ENHANCEMENT (LOTTERY) TRUST FUND
1989-90 and 1990-91 Appropriations (continued)

| | 1989-90 | 1990-91 |
|---|-------------------------|-------------------------|
| Other Postsecondary Programs | | |
| Postsecondary Education Planning Commission | 317,155 | - |
| Scholarships and Grants | 4,986,200 | 8,448,056 |
| Auxiliary Learning Aids/PS Handicapped | 100,000 | 1,328,978 |
| College Reach Out Program | 794,250 | 1,200,000 |
| Technological Research & Development Authority | 615,800 | - |
| Gold Seal Diploma Scholar | 100,000 | - |
| FSU Professor Exchange | 40,000 | - |
| Edward Waters Upgrade | - | 250,000 |
| Bethune-Cookman Challenger | - | 338,411 |
| Bethune-Cookman College of Education | - | 338,411 |
| University of Miami Medical School Minority Affairs | - | 143,378 |
| Historically Black Colleges/Universities Library Fund | - | 193,378 |
| University of Miami Comprehensive Drug Prevention | - | 100,000 |
| Edward Waters - Building Restoration Match | - | 500,000 |
| Total | <u>6,953,405</u> | <u>12,840,612</u> |
| Other Programs and Services | | |
| Florida School for the Deaf and the Blind | 13,450 | 25,297 |
| Other State Services | 18,430,859 | - |
| Industry Services | 405,702 | 405,702 |
| Vocational Business Exchange Program | 150,000 | 150,000 |
| New World School of the Arts | 289,603 | 179,603 |
| International Education Linkages | 500,000 | 550,000 |
| Hemispheric Policy Study Center | 100,000 | - |
| Centers of Agriculture Enhancement | 275,420 | 62,067 |
| Centers of Automotive Enhancement | 60,000 | 600,000 |
| Basic Skills-Vocational Students | 662,000 | - |
| Volunteer Literacy Corps | 20,000 | - |
| Computer Integrated Manufacturing | 300,000 | 150,000 |
| Endowment for Cuban-American Studies | 1,000,000 | - |
| Education Leadership Fund | 7,163 | - |
| Public Broadcasting | 4,386,057 | 999,634 |
| Education Outreach/International Volunteer Program | 83,718 | - |
| Florida Endowment for the Humanities | 100,000 | - |
| Florida Information Resource Network | 4,048,569 | - |
| Government Close Up Program | 27,500 | - |
| Management Training Act | 1,700,000 | - |
| Education Management Improvement | 250,000 | - |
| Health Occupations Education Enhancement | - | 289,000 |
| Humanities Outreach - Tampa | - | 250,000 |
| Total | <u>32,810,041</u> | <u>3,661,303</u> |
| Fixed Capital Outlay | | |
| Transfer to PECO Trust Fund | 49,945,359 | - |
| Transfer to State Infrastructure Trust Fund | 150,000,000 | - |
| UF/Biotechnology Center (Planning) | 600,000 | - |
| UF/Biotechnology Matching Funds | - | 1,550,000 |
| FAU/Davie Campus (s,p,c,e) | 2,000,000 | - |
| FIU/Holocaust Center | 70,000 | - |
| UF/College of Dentistry Building Completion and Equipment | 600,000 | - |
| Sumter County/Bushnell and Wildwood High Schools | 150,000 | - |
| Columbia County/Columbia County High School | 1,400,000 | - |
| Union County/Roof Repair | 700,000 | - |
| K - 12 Capital Outlay Projects | - | 2,405,000 |
| UF/Vet Medicine Teaching Hospital Expansion Phase II | 1,750,000 | - |
| UF/Floyd Hall Renovation | 2,021,100 | - |
| UF/Library East - Renovation / Restoration | 1,900,000 | - |
| USF/Sarasota Caples Project Completion | 450,000 | - |
| USF/Center for Economic Education | 237,500 | - |
| USF/Eye Institute Completion | 360,000 | - |
| USF/Psychiatric Hospital Completion | 400,000 | - |
| UWF/Performing Arts Completion | 279,950 | - |
| SUS Facility Enhancement Challenge Grants | - | 2,065,000 |
| Total | <u>212,863,909</u> | <u>6,020,000</u> |
| Total Department | <u>\$ 1,151,855,441</u> | <u>\$ 1,002,184,640</u> |

EDUCATIONAL ENHANCEMENT (LOTTERY) TRUST FUND
1987-88 and 1988-89 Appropriations

| | 1987-88 | 1988-89 |
|--|-----------------------|-----------------------|
| Public Schools | | |
| Florida Education Finance Program | \$ 20,000,000 | \$ 183,000,000 |
| School Bus Replacement | 5,000,000 | - |
| Council on Environmental Education | - | 18,000 |
| PREP (K-3 Improvement) | 8,500,000 | 9,677,414 |
| Summer Inservice Institutes | 9,925,210 | 9,725,210 |
| Regional Centers of Excellence | - | 425,000 |
| Dropout Prevention | 2,563,000 | 1,485,000 |
| Middle Childhood (PRIME) | 15,000,000 | 15,000,000 |
| Master Teacher Program | 13,113,871 | - |
| Merit Schools | 10,000,000 | 10,000,000 |
| Literacy Centers | 300,000 | 150,000 |
| Pre-School Projects | - | 23,050,000 |
| Curriculum Development and Renewal | - | 235,000 |
| Florida Dropout Identification System | - | 50,000 |
| Governor's Summer Colleges Program | - | 250,000 |
| Library Media Materials | - | 5,531,180 |
| Compact Pilot Program | 500,000 | - |
| Total | 84,902,081 | 258,596,804 |
| Community Colleges | | |
| Community College Program Fund | 2,840,484 | 15,927,578 |
| Endowment Matching Fund | 2,000,000 | - |
| General Office | 70,653 | 23,400 |
| Instructional Equipment | 5,116,689 | 4,846,689 |
| Library Books | 1,760,500 | - |
| Student Articulation System-Administration | 72,375 | - |
| Sunshine State Skills Program | 3,000,000 | 3,985,702 |
| Community College M.I.S. | - | 40,000 |
| Hispanic Vocational Program | - | 100,000 |
| Library Automation | - | 310,750 |
| Literacy Centers | 400,000 | 200,000 |
| Deferred Maintenance | 4,900,000 | 2,000,000 |
| Quality Improvements | - | 3,337,196 |
| Community College Student Data | - | 1,000,020 |
| Learning Resource Centers Materials | - | 4,535,240 |
| Program Reviews | - | 1,785,000 |
| Total | 20,160,701 | 38,091,575 |
| State Universities | | |
| Education and General Activities | 9,561,600 | 15,818,000 |
| UF-Institute of Food and Agricultural Sciences | 1,783,006 | 830,137 |
| USF-Florida Medical Center | 265,403 | 291,943 |
| University of Florida Health Center | 837,054 | 695,039 |
| General Office | 19,750,000 | 4,600,000 |
| Florida Mental Health Institute | 57,000 | - |
| Teacher Education Centers | - | 2,572,281 |
| Total | 32,254,063 | 24,807,400 |
| Other Postsecondary Programs | | |
| Scholarships and Grants | - | 2,976,200 |
| Auxiliary Learning Aids/PS Handicapped | - | 100,000 |
| Enhance Electronics | - | 512,500 |
| Total | - | 3,588,700 |
| Other Programs and Services | | |
| Truck Drivers Training Program | 1,662,500 | 475,000 |
| Vocational Business Exchange Program | 150,000 | 150,000 |
| International Education Linkages | 300,000 | - |
| Hemispheric Policy Study Center | 200,000 | 100,000 |
| Other State Services | - | 400,000 |
| Industry Services | - | 405,702 |
| Centers of Agriculture Enhancement | - | 50,000 |
| Centers of Automotive Enhancement | - | 775,000 |
| Basic Skills - Vocational Students | - | 225,000 |
| Total | 2,312,500 | 2,580,702 |
| Fixed Capital Outlay | | |
| Transfer to PECO Trust Fund | 4,862,581 | - |
| Total | 4,862,581 | - |
| Total Department | \$ 144,491,926 | \$ 327,665,181 |

**2019-20 PROGRAMS AND PROJECTS FUNDED FROM
THE EDUCATIONAL ENHANCEMENT (LOTTERY) TRUST FUND**

PUBLIC SCHOOL SYSTEM

CLASSROOMS FIRST AND 1997 SCHOOL CAPITAL OUTLAY BOND PROGRAMS

EETF: Chapter 2019-115, L.O.F., Specific Appropriation 1: \$82,328,303

Funds in Specific Appropriation 1 are for the cash and debt service requirements of the Classrooms First and 1997 School Capital Outlay Bond programs established in chapter 97-384, L.O.F.

Proviso language allows for funds in Specific Appropriation 1 to be transferred using nonoperating budget authority into the Lottery Capital Outlay and Debt Service Trust Fund, pursuant to section 1013.71, F.S., for the payment of debt service and project expenditures. There is appropriated from the Lottery Capital Outlay and Debt Service Trust Fund an amount sufficient to enable the payment of debt service obligations and projects resulting from these transfers.

During the 20-year period of the 1997 School Capital Outlay Bond Program, over \$2.0 billion in revenue was made available to public school districts for the construction of permanent classroom facilities. See page 36 for the authorized project funding by district. The \$82.3 million appropriation in Specific Appropriation 1 is used to pay the annual debt service obligation on the lottery bonds and to provide cash for projects in districts that elected not to participate in the issuance of bonds. Programs funded from the proceeds are described below.

The Classrooms First Program provided funds to school districts for new construction, renovation, remodeling, repair and maintenance of educational facilities. Funds were allocated as follows: 25 percent based on capital outlay full-time equivalent membership, 65 percent based on growth in capital outlay full-time equivalent (FTE) membership and 10 percent based on the “sum of the years’ digits” formula in s. 1013.64(1)(a), F.S. Districts could use the cash from their share of the appropriation for new construction, renovation, remodeling, major repair, maintenance of educational facilities or to pay debt service on bonds issued by the state on their behalf for these purposes. Proceeds from such bond issues were expended first to provide permanent classroom facilities.

The Classrooms First Program was initiated to fund or partially fund the construction of new schools and additions to existing schools in order to provide permanent classroom facilities. This program has been funded through the issuance of revenue bonds supported by lottery revenues. Lottery-based funds have been encumbered and/or expended by the public school districts for capital outlay projects including the construction of new schools and additions to existing schools, as well as the renovation and remodeling of existing schools.

Also funded from the proceeds were the School Infrastructure Thrift (SIT) Program awards, the Small County Assistance Program and Effort Index grants. The SIT program provided incentive grants to districts for savings realized through functional, frugal school construction. The Small County Assistance Program provided funds to school districts in counties with a population under 75,000 that had an urgent need for a school facility or major school building expansion, repairs and renovations, but lacked sufficient resources over a three-year period to complete such projects. The Effort Index Grant Program provided grants to assist districts that demonstrated a specified level of local funding and still had a need to build new student stations. The funds for these programs have also been fully disbursed by the Florida Department of Education to the qualifying districts.

CLASS SIZE REDUCTION LOTTERY - CAPITAL OUTLAY PROGRAM

EETF: Chapter 2019-115, L.O.F., Specific Appropriation 2: \$133,387,970

Proviso language allows for funds provided in Specific Appropriation 2 to be transferred using nonoperating budget authority to the Lottery Capital Outlay and Debt Service Trust Fund, pursuant to s. 1013.71, F.S., for the payment of debt service. There is appropriated from the Lottery Capital Outlay and Debt Service Trust Fund an amount sufficient to enable the payment of debt service resulting from these transfers.

Additionally, proviso language sets forth that funds provided in Specific Appropriation 2 are for fiscal year 2019-20 debt service obligations on all bonds authorized pursuant to s. 1013.737, F.S., including any other continuing payments necessary or incidental to the repayment of the bonds. These funds may be used to refinance any or all bond series if it is in the best interest of the state.

The Class Size Reduction Lottery Capital Outlay Program, referred to as the “Classrooms for Kids Program,” was established in s. 1013.735, F.S., to provide funding to public school districts for the purpose of meeting constitutional class size reduction requirements. Additionally, the District Effort Recognition Program was established to provide funds to eligible public school districts for capital outlay purposes to reduce class size or for any lawful capital outlay purpose if the class size maximum has been met by a qualifying public school district. The first state appropriation for these programs, in an aggregate amount of \$600,000,000, was approved by the Florida Legislature for fiscal year 2003-04. Additional appropriations of \$654,697,990 for fiscal year 2006-07 and \$650,000,000 for fiscal year 2007-08 were approved by the legislature to fund class size reduction projects. These appropriations were funded through the issuance of revenue bonds supported by lottery revenues, with Specific Appropriation 2 being used to pay the annual debt service obligation on outstanding lottery bonds. Additional funds have not been provided for the program since 2007-08. See page 34 for the authorized bonded project funding by district. For fiscal years 2004-05 and 2005-06, class size reduction appropriations were granted from other revenue sources.

FLORIDA EDUCATION FINANCE PROGRAM

EETF: Chapter 2019-115, L.O.F., Specific Appropriation 6: \$353,358,911

In 1973, the Florida Legislature enacted the Florida Education Finance Program (FEFP) and established the state policy on equalized funding to guarantee to each student in the Florida public education system the availability of programs and services appropriate to his or her educational needs that are substantially equal to those available to any similar student notwithstanding geographic differences and varying local economic factors.

To provide equalization of educational opportunity, the FEFP formula recognizes: (1) varying local property tax bases; (2) varying education program costs; (3) varying costs of living; and (4) varying costs for equivalent educational programs due to sparsity and dispersion of the student population. Section 1011.62, F.S., outlines the formula that must be used to calculate funding through the FEFP.

The FEFP is the primary mechanism for funding the operating costs of Florida school districts. A key feature of the FEFP is that it bases financial support for education upon the individual student participating in a particular educational program rather than upon the number of teachers or classrooms. FEFP funds are primarily generated by multiplying the number of (FTE) students in each of the funded education programs by cost factors to obtain weighted FTE students. Weighted FTE students are then multiplied by a base student allocation and by a district cost differential in the major calculation to determine the base funding from state and local FEFP funds.

The FEFP has a total appropriation of \$9,204,663,401 that is funded with \$353,358,911 from the EETF, \$8,762,965,588 from General Revenue and \$88,338,902 from the State School Trust Fund.

CLASS SIZE REDUCTION

EETF: Chapter 2019-115, L.O.F., Specific Appropriation 7: \$103,776,356

These funds are provided to implement the requirements of ss. 1003.03 and 1011.685, F.S. The class size reduction allocation factor for grades pre-kindergarten through grade 3 shall be \$1,314.06, for grades 4 through 8 shall be \$896.32, and for grades 9 through 12 shall be \$898.49. The class size reduction allocation shall be recalculated based on enrollment through the October 2019 FTE survey, except as provided in s. 1003.03(4), F.S. If the total class size reduction allocation is greater than the appropriation in Specific Appropriations 7 and 94, funds shall be prorated to the level of the appropriation based on each district's calculated amount. The Commissioner of Education may withhold disbursement of these funds until a district is in compliance with reporting information required for class size reduction implementation.

Class Size Reduction has a total appropriation of \$3,111,099,382 that is funded with \$103,776,356 from the EETF, \$86,161,098 from the State School Trust Fund and \$2,921,161,928 from General Revenue.

DISTRICT LOTTERY AND SCHOOL RECOGNITION PROGRAM

EETF: Chapter 2019-115, L.O.F., Specific Appropriation 8: \$134,582,877

These funds are provided for the Florida School Recognition Program to be allocated as awards of up to \$100 per student to qualified schools pursuant to s. 1008.36, F.S.

If there are funds remaining after payment to qualified schools, the balance shall be allocated to all school districts based on each district’s K-12 base funding. From these funds, school districts shall allocate up to \$5 per unweighted student to be used at the discretion of the school advisory council pursuant to s. 24.121(5), F.S. If funds are insufficient to provide \$5 per student, the available funds shall be prorated.

WORKFORCE DEVELOPMENT

EETF: Chapter 2019-115, L.O.F., Specific Appropriation 9: \$81,353,010

Funds in Specific Appropriation 9 are provided for school district workforce education programs as defined in s. 1004.02(25), F.S., and are allocated along with other Workforce Development funds in Specific Appropriation 125 as follows:

| | |
|------------------|--------------|
| Alachua | \$530,690 |
| Baker | \$164,735 |
| Bay | \$2,825,894 |
| Bradford | \$718,895 |
| Brevard..... | \$3,650,758 |
| Broward..... | \$76,995,513 |
| Calhoun..... | \$79,002 |
| Charlotte..... | \$2,119,991 |
| Citrus..... | \$2,043,527 |
| Clay | \$469,160 |
| Collier | \$9,916,885 |
| Columbia..... | \$309,304 |
| Miami-Dade | \$80,670,340 |
| DeSoto..... | \$607,940 |
| Dixie..... | \$68,593 |
| Escambia | \$3,794,637 |
| Flagler | \$1,011,438 |
| Franklin..... | \$75,140 |
| Gadsden..... | \$403,300 |
| Glades | \$78,420 |
| Gulf..... | \$79,014 |
| Hamilton | \$72,932 |
| Hardee | \$182,126 |
| Hendry..... | \$292,808 |

| | |
|-------------------|--------------|
| Hernando..... | \$573,537 |
| Hillsborough..... | \$27,598,434 |
| Indian River..... | \$997,510 |
| Jackson..... | \$234,709 |
| Jefferson..... | \$82,209 |
| Lafayette..... | \$72,535 |
| Lake..... | \$4,707,746 |
| Lee..... | \$9,847,178 |
| Leon..... | \$6,322,703 |
| Liberty..... | \$84,267 |
| Madison..... | \$72,353 |
| Manatee..... | \$9,465,433 |
| Marion..... | \$3,924,889 |
| Martin..... | \$1,120,506 |
| Monroe..... | \$609,617 |
| Nassau..... | \$605,068 |
| Okaloosa..... | \$2,223,670 |
| Orange..... | \$31,942,536 |
| Osceola..... | \$6,663,695 |
| Palm Beach..... | \$17,692,976 |
| Pasco..... | \$3,080,624 |
| Pinellas..... | \$27,589,198 |
| Polk..... | \$7,514,426 |
| Saint Johns..... | \$4,150,060 |
| Santa Rosa..... | \$2,179,007 |
| Sarasota..... | \$8,117,838 |
| Sumter..... | \$184,581 |
| Suwannee..... | \$809,215 |
| Taylor..... | \$1,107,328 |
| Union..... | \$77,890 |
| Wakulla..... | \$89,546 |
| Walton..... | \$1,063,300 |
| Washington..... | \$2,382,254 |

Section 1004.02(25), F.S. – “Workforce education” means adult general education or career education and may consist of a continuing workforce education course or a program of study leading to an occupational completion point, a career certificate, an applied technology diploma or a career degree.

Workforce Development has a total appropriation of \$370,347,980 that is funded with \$81,353,010 from the EETF and \$288,994,970 from General Revenue.

FLORIDA COLLEGES

FIXED CAPITAL OUTLAY DEBT SERVICE

EETF: Chapter 2019-115, L.O.F., Specific Appropriation 3: \$6,651,295

Funds in Specific Appropriation 3 for educational facilities are provided for debt service requirements associated with bond proceeds from the Lottery Capital Outlay and Debt Service Trust Fund included in Specific Appropriations 17 and 17A of Chapter 2012-118, L.O.F., authorized pursuant to s. 1013.737, F.S. Funds in Specific Appropriation 3 shall be transferred, using nonoperating budget authority, to the Lottery Capital Outlay and Debt Service Trust Fund. There is hereby appropriated from the Lottery Capital Outlay and Debt Service Trust Fund an amount sufficient to enable the payment of debt service resulting from these transfers.

From the funds provided in Specific Appropriation 3, \$4,595,017 shall be allocated to pay for fixed capital outlay debt service attributed to Florida colleges (\$2,054,905 is allocated to pay for fixed capital outlay debt service attributed to state universities).

FLORIDA COLLEGE LOTTERY FUNDS

EETF: Chapter 2019-115, L.O.F., Specific Appropriation 11: \$150,218,929

Funds provided in Specific Appropriation 11 shall be allocated as follows:

| | |
|---|--------------|
| Eastern Florida State College..... | \$5,848,489 |
| Broward College | \$11,567,298 |
| College of Central Florida | \$3,212,400 |
| Chipola College | \$1,992,434 |
| Daytona State College..... | \$7,230,079 |
| Florida SouthWestern State College..... | \$4,326,417 |
| Florida State College at Jacksonville..... | \$10,713,941 |
| Florida Keys Community College | \$863,241 |
| Gulf Coast State College..... | \$2,925,404 |
| Hillsborough Community College..... | \$7,099,525 |
| Indian River State College | \$6,295,775 |
| Florida Gateway College | \$1,862,212 |
| Lake-Sumter State College | \$1,753,669 |
| State College of Florida, Manatee-Sarasota..... | \$2,936,965 |
| Miami-Dade College..... | \$24,106,424 |
| North Florida Community College | \$961,038 |
| Northwest Florida State College..... | \$2,654,967 |
| Palm Beach State College..... | \$7,443,097 |
| Pasco-Hernando Community College..... | \$3,413,192 |
| Pensacola State College | \$4,686,728 |
| Polk State College..... | \$3,409,431 |
| Saint Johns River State College | \$2,305,507 |
| Saint Petersburg College..... | \$9,443,975 |
| Santa Fe College | \$4,239,042 |
| Seminole State College of Florida | \$4,722,992 |
| South Florida State College | \$2,181,088 |
| Tallahassee Community College | \$4,320,585 |
| Valencia College..... | \$7,703,014 |

The Florida College System Program Fund has a total appropriation of \$1,210,224,583 that is funded with \$150,218,929 from the EETF and \$1,059,366,154 from General Revenue.

STATE UNIVERSITIES

FIXED CAPITAL OUTLAY DEBT SERVICE

EETF: Chapter 2019-115, L.O.F., Specific Appropriation 3: \$6,651,295

Funds in Specific Appropriation 3 for educational facilities are provided for debt service requirements associated with bond proceeds from the Lottery Capital Outlay and Debt Service Trust Fund included in Specific Appropriations 17 and 17A of chapter 2012-118, L.O.F., authorized pursuant to s. 1013.737, F.S. Funds in Specific Appropriation 3 shall be transferred, using nonoperating budget authority, to the Lottery Capital Outlay and Debt Service Trust Fund. There is hereby appropriated from the Lottery Capital Outlay and Debt Service Trust Fund an amount sufficient to enable the payment of debt service resulting from these transfers.

From the funds provided in Specific Appropriation 3, \$2,055,330 shall be allocated to pay for fixed capital outlay debt service for state universities (\$4,595,965 is allocated to pay for fixed capital outlay debt service for Florida colleges).

STATE UNIVERSITY SYSTEM

EETF: Chapter 2019-115, L.O.F., Specific Appropriation 12: \$342,732,781, Specific Appropriation 13: \$17,079,571, Specific Appropriation 14: \$12,740,542, Specific Appropriation 15: \$7,898,617, Specific Appropriation 16: \$824,574

Funds in chapter 2019-115, L.O.F., Specific Appropriations 12 through 16 shall be expended in accordance with operating budgets that must be approved by each university's board of trustees.

The following Educational and General Activities allocations reflect chapter 2019-115, L.O.F., Specific Appropriation 12:

| | |
|---|--------------|
| University of Florida..... | \$63,020,006 |
| Florida State University | \$52,653,153 |
| Florida A&M University..... | \$19,881,878 |
| University of South Florida | \$46,976,754 |
| University of South Florida, St. Petersburg..... | \$2,074,459 |
| University of South Florida, Sarasota/Manatee | \$1,765,091 |
| Florida Atlantic University | \$27,939,279 |
| University of West Florida..... | \$10,542,913 |
| University of Central Florida..... | \$48,209,374 |

| | |
|---------------------------------------|--------------|
| Florida International University..... | \$41,214,709 |
| University of North Florida | \$17,167,641 |
| Florida Gulf Coast University..... | \$9,539,051 |
| New College of Florida..... | \$1,385,113 |
| Florida Polytechnic University | \$363,360 |

In addition, the EETF supports the following university programs:

Institute of Food and Agricultural Science – Chapter 2019-115, L.O.F., Specific Appropriation 13: \$17,079,571

University of South Florida Medical Center – Chapter 2019-115, L.O.F., Specific Appropriation 14: \$12,740,542

University of Florida Health Center – Chapter 2019-115, L.O.F., Specific Appropriation 15: \$7,898,617

Florida State University Medical School – Chapter 2019-115, L.O.F., Specific Appropriation 16: \$824,574

Educational and General Activities has a total appropriation of \$4,411,156,395. Of this total, \$342,732,781 is from the EETF, \$2,265,995,550 is from General Revenue, \$1,797,281,051 is from the Education/General Student & Other Fees Trust Fund and \$5,147,013 is from the Phosphate Research Trust Fund.

The Institute of Food and Agricultural Science has a total appropriation of \$165,538,366 that is funded partially by \$17,079,571 from the EETF and partially by \$148,458,795 from General Revenue.

The University of South Florida Medical Center has a total appropriation of \$144,201,402. Of this total, \$12,740,542 is from the Educational Enhancement Trust Fund, \$64,697,620 is from the Education/General Student & Other Fees Trust Fund and \$66,763,240 is from General Revenue.

The University of Florida Health Center has a total appropriation of \$152,679,352. Of this total, \$7,898,617 is from the EETF, \$38,463,434 is from the Education/General Student & Other Fees Trust Fund and \$106,317,301 is from General Revenue.

The Florida State University Medical School has a total appropriation of \$48,734,629. Of this total, \$824,574 is from the EETF, \$13,019,086 is from the Education/General Student & Other Fees Trust Fund and \$34,890,969 is from General Revenue.

Note: The detail above includes University System life and health insurance adjustments from Administered Funds.

STUDENT FINANCIAL AID

FLORIDA'S BRIGHT FUTURES SCHOLARSHIP PROGRAM

EETF: Chapter 2019-115, Specific Appropriation 4: \$595,143,167

The Florida Bright Futures Scholarship Program serves students graduating from Florida high schools, home education students, General Education Development students and certain out-of-state students who merit recognition of high academic achievement and enroll in an eligible Florida public or private postsecondary education institution within three years of graduation from high school.

The Bright Futures Scholarship Program consists of four types of awards: the Florida Academic Scholars award, the Florida Medallion Scholars award, the Florida Gold Seal Vocational Scholarship award and the Florida Gold Seal Cape Scholarship. Section 1009.53, F.S., describes the provisions of the scholarship program. There were 101,529 students who received funding for a Bright Futures Scholarship in 2018-19.

In 2019-20, Florida Academic Scholars shall receive an award equal to 100 percent of tuition and applicable fees, and an additional \$300 each fall and spring semester for textbooks and college-related expenses, for up to five years for a maximum of 120 semester hours (or equivalent) toward the completion of a certificate or a first baccalaureate degree.

Medallion Scholars shall receive an award equal to the amount necessary to pay 75 percent of tuition and applicable fees, for up to five years for a maximum of 120 semester hours (or equivalent) toward the completion of a certificate or a first baccalaureate degree.

For Florida Gold Seal Vocational Scholars and Florida Career and Professional Education (CAPE) Vocational Scholars, the award per credit hour or credit hour equivalent for the 2019-20 academic year shall be as follows:

Gold Seal Vocational Scholars and CAPE Vocational Scholars

| | |
|--|------|
| Career Certificate Program | \$39 |
| Applied Technology Diploma Program..... | \$39 |
| Technical Degree Education Program | \$48 |

Gold Seal CAPE Vocational Scholars

| | |
|--|------|
| Bachelor of Science Program with Statewide Articulation Agreement | \$48 |
| Florida College System Bachelor of Applied Science Program..... | \$48 |

The additional stipend for Top Scholars shall be \$44 per credit hour. A Top scholar is a disbursed Florida Academic Scholar in each district who is awarded an additional per credit hour award for fall and spring. Academic Scholars who attend in the fall following

high school graduation are ranked based on the product of their Bright Futures weighted GPA and their best college entrance exam score.

STUDENT FINANCIAL AID

EETF: Chapter 2019-115, L.O.F., Specific Appropriation 5: \$64,513,215

The funds in Specific Appropriation 5 are for the Florida Student Assistance Grant (FSAG) public full-time and part-time student grant programs.

The funds in Specific Appropriation 5 are allocated with funds in Specific Appropriation 75 pursuant to the following guidelines:

| | |
|--|----------------------|
| FSAG – Public Full- and Part-Time | \$233,835,738 |
| FSAG – Private | \$24,245,642 |
| FSAG – Postsecondary | \$8,081,880 |
| FSAG – Career Education | \$3,232,752 |
| Children/Spouses of Deceased/Disabled Veterans | \$7,675,534 |
| Florida Work Experience | \$1,569,922 |
| Rosewood Family Scholarships | \$256,747 |
| Florida Farmworker Scholarships | \$500,000 |
| Total | \$279,398,215 |

From the funds provided in Specific Appropriations 5 and 75, the maximum grant to any student from the Florida Public, Private, Career Education and Postsecondary Assistance Grant Programs shall be \$2,610.

Institutions that received state funds in fiscal year 2018-19 for student scholarships or grants administered by the Office of Student Financial Assistance shall report the following two reports in a format prescribed by the Florida Department of Education, both due by December 1, 2019: (1) federal loan information, including the total federal loan amounts disbursed and the total number of students who received federal loans; and (2) student-level data for all grants, scholarships, and awards to students who apply for and/or receive state-funded tuition assistance and aid.

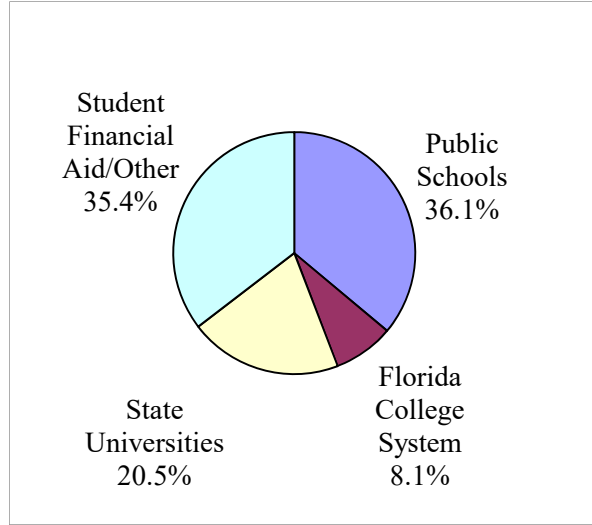
Student Financial Aid has a total appropriation of \$280,498,215. Of this total, \$64,513,215 is from the EETF, \$100,000 is from the Federal Grants Trust Fund and \$215,885,000 is from General Revenue.

**EDUCATIONAL ENHANCEMENT (LOTTERY) TRUST FUND
AND TOTAL OPERATING FUNDS FOR EDUCATION
2019-20 Legislative Session**

Funds from this year's lottery account for 3.1 percent of Florida's total public school education operating budget and 6.4 percent of the combined total operating budgets of the Public Schools, the Florida College System and the State Universities. This analysis includes funds from the General Appropriations Act as passed by the Florida Legislature, but excludes fixed capital outlay funds.

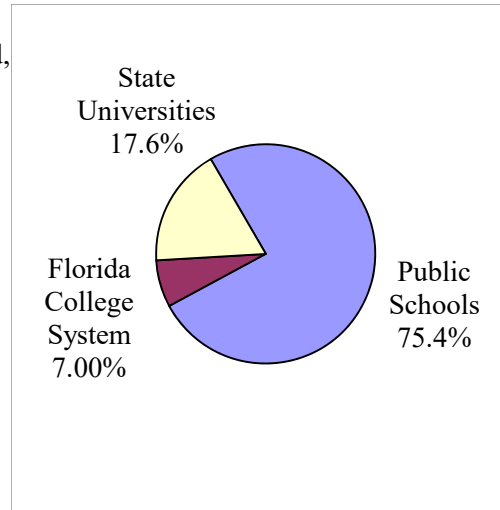
2019-20 Educational Enhancement Trust Fund Appropriations for Operations (millions)

| | |
|------------------|-----------------------------|
| \$673.1 | Public Schools |
| 150.2 | Florida College System |
| 381.3 | State Universities |
| 659.7 | Student Financial Aid/Other |
| <hr/> | |
| <u>\$1,864.2</u> | Total |



2019-20 Operating Funds and Student Tuition for Educational Delivery Systems (millions)

| | |
|-------------------|--|
| \$21,862.3 | Public Schools (General Revenue, State School Fund, Lottery and Local) |
| 2,017.4 | Florida College System (General Revenue, Lottery and Fees) |
| 5,098.8 | State Universities ⁽¹⁾ (General Revenue, Lottery and Fees) |
| <hr/> | |
| <u>\$28,978.5</u> | Total |



Based on an average daily operating cost of \$115.1 million, the \$673.1 million in lottery funds available to public schools would operate the public schools for approximately five days.

⁽¹⁾ Includes University System health and life insurance benefits funded from Administered Funds.

**2019-20 Educational Enhancement (Lottery) Trust Fund
Allocations for Operations ¹**

| County | Estimated School Recognition/ Discretionary K-12 ² | Class Size Reduction Operating ² | Workforce Development | Florida Colleges | State Universities | 2018-19 Bright Futures Disbursements ^{3,3} | Total |
|-----------------|---|---|--------------------------|---------------------|-----------------------|---|---------------|
| | -1- | -2- | -3- | -4- | -5- | -6- | -7- |
| 1 Alachua | \$ 1,103,279 | \$ 1,068,374 | \$ 116,575 | \$ 4,239,042 | \$ 63,020,006 | \$ 8,729,380 | \$ 78,276,656 |
| 2 Baker | 311,034 | 179,166 | 36,187 | - | - | 487,598 | 1,013,985 |
| 3 Bay | 1,125,101 | 946,842 | 620,754 | 2,925,404 | - | 3,983,908 | 9,602,009 |
| 4 Bradford | 98,229 | 112,187 | 157,917 | - | - | 135,634 | 503,967 |
| 5 Brevard | 2,950,924 | 2,652,375 | 801,949 | 5,848,489 | - | 19,702,140 | 31,955,877 |
| 6 Broward | 13,375,025 | 10,105,394 | 16,913,328 | 11,567,298 | - | 64,652,577 | 116,613,622 |
| 7 Calhoun | 95,700 | 73,923 | 17,354 | - | - | 199,835 | 386,812 |
| 8 Charlotte | 728,589 | 568,667 | 465,691 | - | - | 2,732,579 | 4,495,526 |
| 9 Citrus | 478,577 | 518,645 | 448,894 | - | - | 2,313,632 | 3,759,748 |
| 10 Clay | 2,335,251 | 1,364,154 | 103,059 | - | - | 8,169,773 | 11,972,237 |
| 11 Collier | 2,995,056 | 1,856,800 | 2,178,406 | - | - | 8,823,707 | 15,853,969 |
| 12 Columbia | 246,571 | 351,229 | 67,944 | 1,862,212 | - | 817,388 | 3,345,344 |
| 13 Dade | 21,064,797 | 12,862,053 | 17,720,564 | 24,106,424 | 41,214,709 | 62,017,052 | 178,985,599 |
| 14 DeSoto | 217,910 | 173,758 | 133,544 | - | - | 185,117 | 710,329 |
| 15 Dixie | 57,269 | 76,856 | 15,068 | - | - | 67,446 | 216,639 |
| 16 Duval | 5,289,222 | 4,879,146 | - | 10,713,941 | 17,167,641 | 22,980,715 | 61,030,665 |
| 17 Escambia | 1,113,428 | 1,410,158 | 833,554 | 4,686,728 | 10,542,913 | 4,960,113 | 23,546,894 |
| 18 Flagler | 150,757 | 439,372 | 222,179 | - | - | 1,789,897 | 2,602,205 |
| 19 Franklin | 3,968 | 43,343 | 16,506 | - | - | 35,578 | 99,395 |
| 20 Gadsden | 318,146 | 167,835 | 88,591 | - | - | 136,307 | 710,879 |
| 21 Gilchrist | 206,617 | 97,007 | - | - | - | 193,115 | 496,739 |
| 22 Glades | 14,810 | 64,632 | 17,226 | - | - | 57,380 | 154,048 |
| 23 Gulf | 6,176 | 67,829 | 17,357 | - | - | 178,127 | 269,489 |
| 24 Hamilton | 157,321 | 51,616 | 16,021 | - | - | 68,177 | 293,135 |
| 25 Hardee | 213,739 | 173,011 | 40,007 | - | - | 221,364 | 648,121 |
| 26 Hendry | 204,610 | 253,312 | 64,320 | - | - | 344,513 | 866,755 |
| 27 Hernando | 640,947 | 805,998 | 125,987 | - | - | 2,775,518 | 4,348,450 |
| 28 Highlands | 175,862 | 426,602 | - | 2,181,088 | - | 1,202,775 | 3,986,327 |
| 29 Hillsborough | 9,939,865 | 8,077,623 | 6,062,449 | 7,099,525 | 46,976,754 | 46,097,849 | 124,254,065 |
| 30 Holmes | 10,385 | 101,859 | - | - | - | 240,166 | 352,410 |
| 31 Indian River | 1,052,903 | 632,729 | 219,119 | - | - | 3,354,571 | 5,259,322 |
| 32 Jackson | 316,496 | 214,968 | 51,558 | 1,992,434 | - | 570,536 | 3,145,992 |
| 33 Jefferson | 56,284 | 26,536 | 18,059 | - | - | 178,968 | 279,847 |
| 34 Lafayette | 120,570 | 39,882 | 15,933 | - | - | 104,705 | 281,090 |
| 35 Lake | 1,531,894 | 1,590,474 | 1,034,156 | 1,753,669 | - | 5,882,581 | 11,792,774 |
| 36 Lee | 3,842,638 | 3,479,780 | 2,163,094 | 4,326,417 | 9,539,051 | 16,217,820 | 39,568,800 |
| 37 Leon | 1,661,938 | 1,311,488 | 1,388,885 | 4,320,585 | 72,535,031 | 9,556,651 | 90,774,578 |
| 38 Levy | 39,609 | 187,817 | - | - | - | 305,777 | 533,203 |
| 39 Liberty | 88,415 | 41,929 | 18,511 | - | - | 82,206 | 231,061 |
| 40 Madison | 195,811 | 85,687 | 15,893 | 961,038 | - | 113,765 | 1,372,194 |
| 41 Manatee | 2,341,748 | 1,778,641 | 2,079,238 | 2,936,965 | - | 7,514,050 | 16,650,642 |
| 42 Marion | 816,155 | 1,460,612 | 862,166 | 3,212,400 | - | 6,466,448 | 12,817,781 |
| 43 Martin | 791,157 | 699,531 | 246,137 | - | - | 5,725,821 | 7,462,646 |
| 44 Monroe | 465,138 | 321,567 | 133,912 | 863,241 | - | 1,786,510 | 3,570,368 |
| 45 Nassau | 833,628 | 444,544 | 132,913 | - | - | 1,915,944 | 3,327,029 |
| 46 Okaloosa | 2,024,501 | 1,153,355 | 488,466 | 2,654,967 | - | 6,169,499 | 12,490,788 |
| 47 Okeechobee | 93,448 | 223,002 | - | - | - | 336,766 | 653,216 |
| 48 Orange | 10,114,947 | 8,043,840 | 7,016,702 | 7,703,014 | 48,209,374 | 40,551,399 | 121,639,276 |
| 49 Osceola | 1,589,531 | 2,495,762 | 1,463,790 | - | - | 5,909,245 | 11,458,328 |
| 50 Palm Beach | 12,439,793 | 7,390,886 | 3,886,552 | 7,443,097 | 27,939,279 | 49,082,153 | 108,181,760 |
| 51 Pasco | 3,249,804 | 2,745,938 | 676,710 | 3,413,192 | - | 12,523,482 | 22,609,126 |
| 52 Pinellas | 4,582,769 | 3,651,949 | 6,060,420 | 9,443,975 | 2,074,459 | 23,309,228 | 49,122,800 |
| 53 Polk | 4,593,528 | 3,760,913 | 1,650,667 | 3,409,431 | 363,360 | 10,150,964 | 23,928,863 |
| 54 Putnam | 588,193 | 374,103 | - | 2,305,507 | - | 622,798 | 3,890,601 |
| 55 St. Johns | 3,380,396 | 1,564,457 | 911,629 | - | - | 14,129,089 | 19,985,571 |
| 56 St. Lucie | 1,896,892 | 1,525,446 | - | 6,295,775 | - | 4,237,183 | 13,955,296 |
| 57 Santa Rosa | 978,101 | 1,021,171 | 478,655 | - | - | 5,471,954 | 7,949,881 |
| 58 Sarasota | 2,807,089 | 1,607,846 | 1,783,216 | - | 3,150,204 | 12,267,168 | 21,615,523 |
| 59 Seminole | 2,786,170 | 2,411,409 | - | 4,722,992 | - | 19,953,310 | 29,873,881 |
| 60 Sumter | 497,027 | 305,580 | 40,546 | - | - | 1,002,767 | 1,845,920 |
| 61 Suwannee | 165,995 | 192,865 | 177,757 | - | - | 509,860 | 1,046,477 |
| 62 Taylor | 63,061 | 87,332 | 243,243 | - | - | 181,910 | 575,546 |
| 63 Union | 7,496 | 81,070 | 17,110 | - | - | 172,357 | 278,033 |
| 64 Volusia | 1,776,280 | 2,212,474 | - | 7,230,079 | - | 9,287,969 | 20,506,802 |
| 65 Wakulla | 447,535 | 174,907 | 19,670 | - | - | 610,496 | 1,252,608 |
| 66 Walton | 505,893 | 348,977 | 233,571 | - | - | 985,061 | 2,073,502 |
| 67 Washington | 90,516 | 117,123 | 523,301 | - | - | 170,474 | 901,414 |

TOTAL \$ 134,462,514 \$ 103,776,356 \$ 81,353,010 \$ 150,218,929 \$ 342,732,781 \$ 541,710,842 \$ 1,354,254,432

1. Additional Lottery-funded programs information not available by district. Excludes fixed capital outlay appropriations.
2. Categories exclude allocations for the Florida Virtual School.
3. The Bright Futures Scholarship Program county allocations in this table do not include the funds for the Florida School for the Deaf and the Blind, Adult High School or non-Florida schools cited on page 38. The SUS Lab School funds are included for the county in which the school

2019-20 FEFP - SECOND CALCULATION

| District | District | Estimated | Total |
|-----------------------|----------------------|-------------|------------|
| | Discretionary | School | District |
| | Lottery ¹ | Recognition | Lottery |
| | -1- | -2- | -3- |
| 1 Alachua | \$ 97,743 | \$ 890,459 | \$ 988,202 |
| 2 Baker | 16,347 | 294,687 | 311,034 |
| 3 Bay | 88,124 | 1,036,977 | 1,125,101 |
| 4 Bradford | 10,162 | 88,067 | 98,229 |
| 5 Brevard | 249,437 | 2,701,487 | 2,950,924 |
| 6 Broward | 939,800 | 12,365,000 | 13,304,800 |
| 7 Calhoun | 6,912 | 88,788 | 95,700 |
| 8 Charlotte | 53,331 | 675,258 | 728,589 |
| 9 Citrus | 48,640 | 429,937 | 478,577 |
| 10 Clay | 130,911 | 2,204,340 | 2,335,251 |
| 11 Collier | 175,185 | 2,819,871 | 2,995,056 |
| 12 Columbia | 31,884 | 214,687 | 246,571 |
| 13 Miami-Dade | 1,209,168 | 19,855,629 | 21,064,797 |
| 14 De Soto | 15,796 | 202,114 | 217,910 |
| 15 Dixie | 6,980 | 50,289 | 57,269 |
| 16 Duval | 450,073 | 4,839,149 | 5,289,222 |
| 17 Escambia | 132,336 | 981,092 | 1,113,428 |
| 18 Flagler | 41,537 | 109,220 | 150,757 |
| 19 Franklin | 3,968 | - | 3,968 |
| 20 Gadsden | 15,428 | 302,718 | 318,146 |
| 21 Gilchrist | 8,914 | 197,703 | 206,617 |
| 22 Glades | 5,758 | 9,052 | 14,810 |
| 23 Gulf | 6,176 | - | 6,176 |
| 24 Hamilton | 4,921 | 152,400 | 157,321 |
| 25 Hardee | 16,012 | 197,727 | 213,739 |
| 26 Hendry | 23,610 | 181,000 | 204,610 |
| 27 Hernando | 75,884 | 565,063 | 640,947 |
| 28 Highlands | 39,356 | 136,506 | 175,862 |
| 29 Hillsborough | 755,137 | 9,184,728 | 9,939,865 |
| 30 Holmes | 9,650 | 735 | 10,385 |
| 31 Indian River | 59,222 | 993,681 | 1,052,903 |
| 32 Jackson | 19,995 | 296,501 | 316,496 |
| 33 Jefferson | 2,402 | 53,882 | 56,284 |
| 34 Lafayette | 3,741 | 116,829 | 120,570 |
| 35 Lake | 148,471 | 1,383,423 | 1,531,894 |
| 36 Lee | 327,065 | 3,515,573 | 3,842,638 |
| 37 Leon | 114,343 | 1,370,588 | 1,484,931 |
| 38 Levy | 17,619 | 21,990 | 39,609 |
| 39 Liberty | 4,270 | 84,145 | 88,415 |
| 40 Madison | 7,891 | 187,920 | 195,811 |
| 41 Manatee | 165,582 | 2,176,166 | 2,341,748 |
| 42 Marion | 137,539 | 678,616 | 816,155 |
| 43 Martin | 65,828 | 725,329 | 791,157 |
| 44 Monroe | 29,589 | 435,549 | 465,138 |
| 45 Nassau | 41,705 | 791,923 | 833,628 |
| 46 Okaloosa | 108,693 | 1,915,808 | 2,024,501 |
| 47 Okeechobee | 21,135 | 72,313 | 93,448 |
| 48 Orange | 753,265 | 9,361,682 | 10,114,947 |
| 49 Osceola | 236,712 | 1,352,819 | 1,589,531 |
| 50 Palm Beach | 701,865 | 11,620,628 | 12,322,493 |
| 51 Pasco | 258,008 | 2,991,796 | 3,249,804 |
| 52 Pinellas | 342,315 | 4,240,454 | 4,582,769 |
| 53 Polk | 348,209 | 4,245,319 | 4,593,528 |
| 54 Putnam | 34,348 | 553,845 | 588,193 |
| 55 St. Johns | 150,645 | 3,229,751 | 3,380,396 |
| 56 St. Lucie | 138,443 | 1,613,422 | 1,751,865 |
| 57 Santa Rosa | 95,419 | 882,682 | 978,101 |
| 58 Sarasota | 153,075 | 2,654,014 | 2,807,089 |
| 59 Seminole | 230,451 | 2,555,719 | 2,786,170 |
| 60 Sumter | 28,091 | 468,936 | 497,027 |
| 61 Suwannee | 18,045 | 147,950 | 165,995 |
| 62 Taylor | 8,177 | 54,884 | 63,061 |
| 63 Union | 7,496 | - | 7,496 |
| 64 Volusia | 206,419 | 1,569,861 | 1,776,280 |
| 65 Wakulla | 16,164 | 431,371 | 447,535 |
| 66 Walton | 32,472 | 473,421 | 505,893 |
| 67 Washington | 11,300 | 79,216 | 90,516 |
| 68 Washington Special | - | - | - |
| 69 FAMU Lab School | 2,089 | - | 2,089 |
| 70 FAU Lab School | 3,865 | 113,435 | 117,300 |
| 71 FAU Lab St. Lucie | 4,730 | 140,297 | 145,027 |
| 72 FSU Lab Broward | 2,476 | 67,749 | 70,225 |
| 73 FSU Lab Leon | 5,743 | 169,175 | 174,918 |
| 74 UF Lab School | 3,717 | 111,360 | 115,077 |
| 75 Virtual School | 120,363 | - | 120,363 |

Total \$ 9,858,172 \$ 124,724,705 \$ 134,582,877

¹ Once the amount necessary to fund School Recognition Program is determined, the balance is used for Discretionary Lottery for school advisory council school improvement plans. This usually occurs after school grades are released.

EDUCATIONAL ENHANCEMENT (LOTTERY) TRUST FUND ¹
Bright Futures Scholarship Program
Student Disbursements by County and Year (Public and Private High Schools) (Continued)

| County | 2015-16 | 2016-17 | 2017-18 | 2018-19 |
|----------------------------|----------------|------------------|------------------|------------------|
| | -19- | -20- | -21- | -21- |
| 1 Alachua | \$ 3,497,023 | \$ 3,181,287 | \$ 6,657,431 | \$ 8,154,238 |
| 2 Baker | 221,110 | 206,129 | 320,645 | 487,598 |
| 3 Bay | 1,752,797 | 1,579,266 | 3,197,636 | 3,983,908 |
| 4 Bradford | 123,676 | 74,858 | 104,952 | 135,634 |
| 5 Brevard | 9,333,807 | 8,400,055 | 15,603,425 | 19,702,140 |
| 6 Broward | 26,912,172 | 24,080,888 | 43,017,124 | 64,652,577 |
| 7 Calhoun | 133,433 | 112,031 | 150,003 | 199,835 |
| 8 Charlotte | 1,415,622 | 1,227,335 | 2,131,056 | 2,732,579 |
| 9 Citrus | 1,169,315 | 1,014,825 | 1,680,248 | 2,313,632 |
| 10 Clay | 3,365,045 | 3,088,321 | 5,928,990 | 8,169,773 |
| 11 Collier | 3,871,113 | 3,404,662 | 6,231,794 | 8,823,707 |
| 12 Columbia | 366,840 | 306,937 | 509,719 | 817,388 |
| 13 Miami-Dade | 23,946,468 | 20,890,570 | 39,461,346 | 62,017,052 |
| 14 De Soto | 88,045 | 78,397 | 94,835 | 185,117 |
| 15 Dixie | 58,324 | 57,029 | 60,767 | 67,446 |
| 16 Duval | 9,692,317 | 8,737,938 | 16,544,268 | 22,980,715 |
| 17 Escambia | 2,550,003 | 2,201,729 | 3,825,410 | 4,960,113 |
| 18 Flagler | 800,335 | 721,548 | 1,194,383 | 1,789,897 |
| 19 Franklin | 28,819 | 22,890 | 24,504 | 35,578 |
| 20 Gadsden | 74,162 | 54,078 | 85,296 | 136,307 |
| 21 Gilchrist | 123,098 | 100,031 | 124,401 | 193,115 |
| 22 Glades | 21,349 | 12,089 | 17,208 | 57,380 |
| 23 Gulf | 101,670 | 73,305 | 134,269 | 178,127 |
| 24 Hamilton | 29,585 | 29,918 | 71,202 | 68,177 |
| 25 Hardee | 143,641 | 120,185 | 177,934 | 221,364 |
| 26 Hendry | 224,855 | 167,043 | 219,149 | 344,513 |
| 27 Hernando | 1,438,372 | 1,284,517 | 1,939,965 | 2,775,518 |
| 28 Highlands | 503,805 | 401,023 | 824,477 | 1,202,775 |
| 29 Hillsborough | 18,632,757 | 17,252,026 | 32,316,685 | 46,097,849 |
| 30 Holmes | 152,633 | 121,660 | 164,754 | 240,166 |
| 31 Indian River | 1,479,623 | 1,309,181 | 2,325,226 | 3,354,571 |
| 32 Jackson | 324,608 | 248,228 | 371,067 | 570,536 |
| 33 Jefferson | 78,797 | 61,818 | 109,006 | 178,968 |
| 34 Lafayette | 58,804 | 60,354 | 91,831 | 104,705 |
| 35 Lake | 2,608,710 | 2,315,683 | 3,816,124 | 5,882,581 |
| 36 Lee | 6,534,717 | 6,086,685 | 12,743,999 | 16,217,820 |
| 37 Leon | 3,905,275 | 3,495,977 | 6,578,711 | 9,053,237 |
| 38 Levy | 204,350 | 159,954 | 211,037 | 305,777 |
| 39 Liberty | 64,839 | 51,885 | 69,472 | 82,206 |
| 40 Madison | 54,664 | 44,046 | 82,054 | 113,765 |
| 41 Manatee | 3,191,998 | 2,908,016 | 5,246,526 | 7,514,050 |
| 42 Marion | 2,997,210 | 2,629,988 | 5,278,252 | 6,466,448 |
| 43 Martin | 2,540,703 | 2,265,812 | 4,120,999 | 5,725,821 |
| 44 Monroe | 730,977 | 602,601 | 1,123,701 | 1,786,510 |
| 45 Nassau | 716,120 | 671,256 | 1,158,428 | 1,915,944 |
| 46 Okaloosa | 2,590,323 | 2,452,373 | 4,676,993 | 6,169,499 |
| 47 Okeechobee | 187,355 | 158,677 | 248,449 | 336,766 |
| 48 Orange | 15,390,380 | 14,302,761 | 27,565,915 | 40,551,399 |
| 49 Osceola | 2,410,383 | 2,160,956 | 4,087,873 | 5,909,245 |
| 50 Palm Beach | 18,949,412 | 17,557,687 | 34,830,718 | 47,958,977 |
| 51 Pasco | 5,324,809 | 4,723,233 | 8,436,846 | 12,523,482 |
| 52 Pinellas | 10,804,668 | 9,516,246 | 17,272,514 | 23,309,228 |
| 53 Polk | 4,544,770 | 3,940,626 | 6,730,035 | 10,150,964 |
| 54 Putnam | 264,731 | 211,188 | 409,794 | 622,798 |
| 55 St. Johns | 4,934,578 | 4,801,506 | 9,915,341 | 14,129,089 |
| 56 St. Lucie | 1,905,878 | 1,520,224 | 2,776,072 | 4,237,183 |
| 57 Santa Rosa | 2,377,113 | 2,122,203 | 3,994,804 | 5,471,954 |
| 58 Sarasota | 4,642,730 | 4,279,368 | 8,941,597 | 12,267,168 |
| 59 Seminole | 8,242,654 | 7,515,604 | 14,148,878 | 19,953,310 |
| 60 Sumter | 376,283 | 353,257 | 638,884 | 1,002,767 |
| 61 Suwannee | 252,209 | 220,578 | 361,189 | 509,860 |
| 62 Taylor | 122,458 | 115,250 | 158,844 | 181,910 |
| 63 Union | 77,212 | 70,978 | 106,141 | 172,357 |
| 64 Volusia | 4,437,995 | 3,928,549 | 7,032,184 | 9,287,969 |
| 65 Wakulla | 239,466 | 234,054 | 422,946 | 610,496 |
| 66 Walton | 329,499 | 317,133 | 602,200 | 985,061 |
| 67 Washington | 138,354 | 113,195 | 135,642 | 170,474 |
| 68 School for Deaf & Blind | 7,812 | 11,044 | 19,452 | 32,594 |
| 71 Florida Virtual School | 109,667 | 165,195 | 359,063 | 596,123 |
| 72 FAU Lab School | 160,049 | 267,166 | 654,042 | 1,123,176 |
| 73 FSU Lab School | 224,861 | 194,416 | 322,335 | 491,940 |
| 74 FAMU Lab School | 14,770 | 13,701 | 16,707 | 11,474 |
| 75 UF Lab School | 261,586 | 258,722 | 426,726 | 575,142 |
| 77 Comm. Coll Adult HS | 59,695 | 42,843 | 53,715 | 72,021 |
| 99 Non Florida Schools | 641,988 | 624,693 | 1,263,648 | 1,995,678 |
| Total | \$ 226,287,272 | * \$ 204,107,475 | * \$ 382,749,854 | * \$ 544,407,258 |

1. 2018-19 Bright Futures Scholarship Program data represents the latest available data at time of publication.

NOTE: The sum of district totals may not equal total due to rounding.

*Totals correspond to end of year reports.

K-12 Public School Capital Outlay Construction Bonds

| County | 2003-04 | | 2003-04 | | 2006-07 | | 2007-08 | |
|-----------------------|-------------------------|----------------------|-----------------------|-----------------------|-----------------------|-------------------------|---------|--|
| | Classrooms | District Effort | Classrooms for Kids | Classrooms for Kids | Classrooms for Kids | Classrooms for Kids | Total | |
| | First* | Recognition | Allocations | Allocations | Allocations | Allocations | | |
| | -1- | -2- | -3- | -4- | -5- | -6- | | |
| 1 Alachua | \$ 19,216,634 | \$ 419,099 | \$ 3,296,557 | \$ 5,259,403 | \$ 5,727,637 | \$ 33,919,330 | | |
| 2 Baker | 2,681,131 | - | 644,730 | 1,865,015 | 1,105,938 | 6,296,814 | | |
| 3 Bay | 15,624,882 | 312,908 | 4,107,770 | 6,020,288 | 3,380,434 | 29,446,282 | | |
| 4 Bradford | 2,404,496 | - | 1,096,794 | 436,537 | 524,422 | 4,462,249 | | |
| 5 Brevard | 43,146,937 | - | 12,813,233 | 6,734,089 | 7,059,949 | 69,754,208 | | |
| 6 Broward | 281,536,984 | 791,603 | 43,226,914 | 24,075,788 | 22,505,759 | 372,137,048 | | |
| 7 Calhoun | 1,429,060 | - | 354,532 | 251,874 | 245,901 | 2,281,367 | | |
| 8 Charlotte | 15,442,537 | 85,810 | 3,948,972 | 1,527,843 | 2,910,824 | 23,915,986 | | |
| 9 Citrus | 9,195,958 | - | 2,447,354 | 4,317,471 | 7,455,967 | 23,416,750 | | |
| 10 Clay | 29,913,944 | 111,601 | 8,275,859 | 22,804,678 | 31,556,356 | 92,662,438 | | |
| 11 Collier | 14,059,265 | - | 17,156,690 | 23,239,385 | 7,854,863 | 62,310,203 | | |
| 12 Columbia | 5,863,848 | - | 1,616,162 | 3,033,362 | 1,158,000 | 11,671,372 | | |
| 13 Miami-Dade | 249,217,537 | 4,767,022 | 45,557,948 | 31,841,630 | 30,616,996 | 362,001,133 | | |
| 14 De Soto | 2,502,469 | - | 600,718 | 496,139 | 858,431 | 4,457,757 | | |
| 15 Dixie | 1,452,772 | - | 215,221 | 364,794 | 488,345 | 2,521,132 | | |
| 16 Duval | 84,717,252 | 543,468 | 17,752,872 | 13,700,263 | 12,265,719 | 128,979,574 | | |
| 17 Escambia | 26,393,641 | 418,940 | 3,966,914 | 4,163,338 | 4,061,135 | 39,003,968 | | |
| 18 Flagler | 9,864,160 | 52,088 | 5,138,061 | 16,040,488 | 23,858,139 | 54,952,936 | | |
| 19 Franklin | 1,450,780 | - | 160,380 | 162,000 | 146,700 | 1,919,860 | | |
| 20 Gadsden | 4,837,724 | - | 670,697 | 696,057 | 2,694,027 | 8,898,505 | | |
| 21 Gilchrist | 2,457,269 | - | 540,214 | 630,896 | 434,718 | 4,063,097 | | |
| 22 Glades | 2,491,160 | - | 114,343 | 468,644 | 121,011 | 3,195,158 | | |
| 23 Gulf | 1,760,593 | 30,089 | 415,469 | 266,447 | 1,170,198 | 3,642,796 | | |
| 24 Hamilton | 1,029,834 | - | 207,274 | 232,033 | 576,688 | 2,045,829 | | |
| 25 Hardee | 3,379,131 | - | 1,567,550 | 896,493 | 1,884,896 | 7,728,070 | | |
| 26 Hendry | 6,512,952 | - | 1,620,360 | 728,423 | 742,656 | 9,604,391 | | |
| 27 Hernando | 12,679,144 | 239,247 | 6,152,470 | 13,824,636 | 16,756,747 | 49,652,244 | | |
| 28 Highlands | 8,234,358 | - | 2,027,286 | 2,290,249 | 5,674,283 | 18,226,176 | | |
| 29 Hillsborough | 138,946,878 | 2,699,045 | 70,999,118 | 83,136,437 | 32,337,930 | 328,119,408 | | |
| 30 Holmes | 2,867,462 | - | 309,574 | 693,721 | 321,091 | 4,191,848 | | |
| 31 Indian River | 4,485,195 | 277,685 | 4,198,399 | 4,870,372 | 5,174,852 | 19,006,503 | | |
| 32 Jackson | 4,651,903 | 27,761 | 1,224,653 | 1,801,279 | 2,404,806 | 10,110,402 | | |
| 33 Jefferson | 1,414,820 | - | 253,792 | 192,046 | 180,564 | 2,041,222 | | |
| 34 Lafayette | 466,979 | - | 125,217 | 279,936 | 617,911 | 1,490,043 | | |
| 35 Lake | 34,625,585 | 676,014 | 15,838,151 | 15,876,781 | 31,512,781 | 98,529,312 | | |
| 36 Lee | 40,210,895 | - | 20,557,312 | 43,853,559 | 37,272,835 | 141,894,601 | | |
| 37 Leon | 15,434,055 | 1,165,027 | 4,271,562 | 7,659,840 | 7,885,038 | 36,415,522 | | |
| 38 Levy | 4,696,731 | - | 758,001 | 616,778 | 2,009,988 | 8,081,498 | | |
| 39 Liberty | 997,779 | - | 244,519 | 914,278 | 550,114 | 2,706,690 | | |
| 40 Madison | 1,596,483 | - | 262,775 | 275,465 | 253,926 | 2,388,649 | | |
| 41 Manatee | 26,398,468 | 1,399,092 | 10,035,150 | 19,752,915 | 3,886,852 | 61,472,477 | | |
| 42 Marion | 32,203,144 | 50,156 | 9,196,293 | 14,133,028 | 15,850,264 | 71,432,885 | | |
| 43 Martin | 15,970,399 | - | 7,314,379 | 4,170,429 | 5,956,614 | 33,411,821 | | |
| 44 Monroe | 5,338,193 | 141,170 | 978,346 | 1,005,106 | 890,164 | 8,352,979 | | |
| 45 Nassau | 14,754,331 | - | 1,840,495 | 3,850,626 | 5,225,718 | 25,671,170 | | |
| 46 Okaloosa | 16,652,703 | - | 2,762,334 | 3,827,966 | 2,769,177 | 26,012,180 | | |
| 47 Okeechobee | 4,107,241 | - | 916,731 | 1,326,935 | 2,019,818 | 8,370,725 | | |
| 48 Orange | 153,184,961 | 7,736,243 | 35,111,140 | 39,353,395 | 15,834,213 | 251,219,952 | | |
| 49 Osceola | 79,367,481 | 2,177,514 | 22,596,087 | 22,099,441 | 35,256,838 | 161,497,361 | | |
| 50 Palm Beach | 137,031,375 | 1,076,752 | 42,596,719 | 17,957,905 | 13,599,649 | 212,262,400 | | |
| 51 Pasco | 42,560,357 | 149,579 | 20,100,560 | 29,769,917 | 37,066,223 | 129,646,636 | | |
| 52 Pinellas | 83,646,728 | 1,817 | 17,895,617 | 15,045,087 | 10,615,544 | 127,204,793 | | |
| 53 Polk | 58,495,708 | - | 24,469,514 | 48,615,388 | 62,051,089 | 193,631,699 | | |
| 54 Putnam | 10,045,986 | 52,211 | 1,418,203 | 1,318,299 | 1,276,612 | 14,111,311 | | |
| 55 St. Johns | 26,134,482 | 162,064 | 12,550,747 | 18,997,065 | 26,594,997 | 84,439,355 | | |
| 56 St. Lucie | 23,378,992 | 325,171 | 10,212,030 | 20,471,516 | 54,352,358 | 108,740,067 | | |
| 57 Santa Rosa | 24,848,427 | 121,383 | 5,619,846 | 4,201,038 | 7,387,260 | 42,177,954 | | |
| 58 Sarasota | 32,097,640 | 430,238 | 9,258,101 | 9,527,510 | 9,754,856 | 61,068,345 | | |
| 59 Seminole | 43,405,640 | 1,221,849 | 12,900,922 | 12,544,043 | 5,409,345 | 75,481,799 | | |
| 60 Sumter | 5,567,448 | - | 878,121 | 682,918 | 537,893 | 7,666,380 | | |
| 61 Suwannee | 4,447,393 | - | 610,400 | 1,618,844 | 2,076,238 | 8,752,875 | | |
| 62 Taylor | 2,614,860 | - | 385,052 | 349,706 | 322,980 | 3,672,598 | | |
| 63 Union | 2,137,517 | - | 215,498 | 898,035 | 647,206 | 3,898,256 | | |
| 64 Volusia | 41,853,226 | 2,280,318 | 11,390,642 | 10,409,030 | 10,079,213 | 76,012,429 | | |
| 65 Wakulla | 4,206,055 | 57,036 | 554,566 | 1,490,289 | 3,583,126 | 9,891,072 | | |
| 66 Walton | 5,554,869 | - | 2,216,111 | 2,960,743 | 954,324 | 11,686,047 | | |
| 67 Washington | 2,855,876 | - | 859,402 | 1,213,392 | 1,422,802 | 6,351,472 | | |
| 68 Washington Special | - | - | - | - | - | - | | |
| 69 FAMU Lab School | 533,474 | - | 62,208 | 88,322 | 61,059 | 745,063 | | |
| 70 FAU Lab School | 707,324 | - | 197,152 | 367,113 | 49,938 | 1,321,527 | | |
| 71 FSU Broward | - | - | - | - | - | - | | |
| 72 FSU Leon | 931,338 | - | - | - | - | 931,338 | | |
| 73 UF Lab School | 928,221 | - | 121,217 | 113,235 | 109,055 | 1,271,728 | | |
| 74 Fla Virtual School | - | - | - | - | - | - | | |
| Total | \$ 2,011,851,074 | \$ 30,000,000 | \$ 570,000,000 | \$ 654,697,990 | \$ 650,000,000 | \$ 3,916,549,064 | | |

*A total of \$963,242 is disbursed in cash payments annually to selected districts that elected not to participate in the bond sales.

All programs in columns 1 through 5 above are funded through the issuance of bonds.

The debt service obligation on these bonds is payable through lottery funds

For fiscal years 2004-05 and 2005-06, class size reduction appropriations were granted from other revenue sources and are not included herein.

**Historical Analysis of the General Revenue Fund
Total Appropriations and Education Appropriations***
(millions)

| | Total Appropriations | Non Recurring | Recurring | Total Education Appropriations | Non Recurring | Recurring | Recurring Education Appropriations as a Percentage of Total Recurring Appropriations | Education Appropriations as a Percentage of Total Appropriations |
|---------|-------------------------|------------------|------------|--------------------------------------|------------------|------------|--|---|
| 1986-87 | \$ 7,788.5 | \$ 291.2 | \$ 7,497.3 | \$ 4,651.7 | \$ 64.2 | \$ 4,587.5 | 61.19% | 59.73% |
| 1987-88 | 8,629.9 | 83.1 | 8,546.8 | 5,111.4 | 2.3 | 5,109.1 | 59.78% | 59.23% |
| 1988-89 | 9,513.0 | 109.3 | 9,403.7 | 5,552.0 | 36.1 | 5,515.9 | 58.66% | 58.36% |
| 1989-90 | 9,976.4 | 67.5 | 9,908.9 | 5,724.5 | 3.1 | 5,721.4 | 57.74% | 57.38% |
| 1990-91 | 10,473.2 | 58.4 | 10,414.8 | 5,807.5 | 14.4 | 5,793.1 | 55.62% | 55.45% |
| 1991-92 | 11,061.2 | 22.2 | 11,039.0 | 5,804.7 | 1.9 | 5,802.8 | 52.57% | 52.48% |
| 1992-93 | 11,837.1 | 28.7 | 11,808.4 | 6,010.5 | 0.3 | 6,010.2 | 50.90% | 50.78% |
| 1993-94 | 13,039.5 | 150.1 | 12,889.4 | 6,550.0 | 57.6 | 6,492.4 | 50.37% | 50.23% |
| 1994-95 | 13,875.1 | 61.2 | 13,813.9 | 6,995.6 | 15.4 | 6,980.2 | 50.53% | 50.42% |
| 1995-96 | 14,797.4 | 401.4 | 14,396.0 | 7,503.8 | 122.9 | 7,380.9 | 51.27% | 50.71% |
| 1996-97 | 15,563.8 | 400.3 | 15,163.5 | 8,128.9 | 84.1 | 8,044.8 | 53.05% | 52.23% |
| 1997-98 | 17,098.1 | 696.8 | 16,401.3 | 9,212.4 | 395.4 | 8,817.0 | 53.76% | 53.88% |
| 1998-99 | 18,009.8 | 599.6 | 17,410.2 | 9,649.0 | 138.3 | 9,510.7 | 54.63% | 53.58% |
| 1999-00 | 18,447.1 | 709.7 | 17,737.4 | 10,236.3 | 368.1 | 9,868.2 | 55.63% | 55.49% |
| 2000-01 | 19,607.4 | 517.3 | 19,090.1 | 10,655.8 | 142.9 | 10,512.9 | 55.07% | 54.35% |
| 2001-02 | 19,077.3 | 554.7 | 18,522.6 | 10,046.8 | 215.9 | 9,830.9 | 53.08% | 52.66% |
| 2002-03 | 20,494.1 | 464.8 | 20,029.3 | 10,814.1 | 63.2 | 10,750.9 | 53.68% | 52.77% |
| 2003-04 | 21,179.7 | 70.5 | 21,109.2 | 11,223.5 | 1.2 | 11,222.3 | 53.16% | 52.99% |
| 2004-05 | 23,670.2 | 1,111.9 | 22,558.4 | 12,144.0 | 184.5 | 11,959.5 | 53.02% | 51.31% |
| 2005-06 | 26,472.6 | 1,654.1 | 24,818.5 | 13,379.8 | 324.8 | 13,055.0 | 52.60% | 50.54% |
| 2006-07 | 29,135.2 | 2,488.4 | 26,646.8 | 14,233.0 | 259.6 | 13,973.4 | 52.44% | 48.85% |
| 2007-08 | 28,475.4 | 1,900.5 | 26,574.9 | 14,503.3 | 552.2 | 13,951.1 | 52.50% | 50.93% |
| 2008-09 | 24,802.8 | 678.5 | 24,124.3 | 12,329.0 | 37.3 | 12,291.7 | 50.95% | 49.71% |
| 2009-10 | 21,126.2 | 509.1 | 20,617.1 | 11,375.2 | 48.2 | 11,327.0 | 54.94% | 53.84% |
| 2010-11 | 23,877.6 | 1,343.4 | 22,534.2 | 12,557.7 | 359.3 | 12,198.4 | 54.13% | 52.59% |
| 2011-12 | 23,006.5 | 281.3 | 22,725.2 | 12,009.8 | 21.3 | 11,988.5 | 52.75% | 52.20% |
| 2012-13 | 24,565.5 | 80.0 | 24,485.5 | 12,671.7 | (204.3) | 12,876.0 | 52.59% | 51.58% |
| 2013-14 | 26,482.6 | 340.2 | 26,142.4 | 14,157.1 | 81.1 | 14,076.0 | 53.84% | 53.46% |
| 2014-15 | 27,480.1 | 547.1 | 26,933.0 | 14,464.2 | 135.5 | 14,328.7 | 53.20% | 52.64% |
| 2015-16 | 28,869.4 | 616.3 | 28,253.1 | 15,113.0 | 97.8 | 15,015.2 | 53.15% | 52.35% |
| 2016-17 | 30,314.5 | 846.9 | 29,467.6 | 15,585.0 | 260.4 | 15,324.5 | 52.00% | 51.41% |
| 2017-18 | 31,368.5 | 662.7 | 30,705.9 | 16,620.1 | 24.0 | 16,596.1 | 54.05% | 52.98% |
| 2018-19 | 32,613.4 | 839.4 | 31,774.1 | 17,000.8 | (23.1) | 17,023.8 | 53.58% | 52.13% |
| 2019-20 | 33,888.1 | 997.6 | 32,890.4 | 17,463.8 | (58.9) | 17,522.7 | 53.28% | 51.53% |

The purpose of this table is to demonstrate the continuity of General Revenue appropriations for education since the inception of the Florida Lottery. The EETF supplements, but does not supplant, state funding of education through the General Revenue Fund and other revenue sources. Excludes fixed capital outlay appropriations.

* Data for this chart are available from OPB/Governor's Office or legislative staff. The Florida Department of Education does not have access to LAS/PBS data other than Education.

EDUCATIONAL ENHANCEMENT TRUST FUND

FINANCIAL OUTLOOK STATEMENT

Including Results of December 2019 Revenue Estimating Conferences and Other Adjustments as of January 10, 2020
 FY 2019-20 through FY 2024-25
 (\$ MILLIONS)

DATE: January 15, 2020

| | <u>RECURRING</u> | <u>NON- RECURRING</u> | <u>TOTAL</u> |
|---|------------------|---------------------------|----------------|
| FUNDS AVAILABLE 2019-20 | | | |
| Balance Forward from 2018-19 | 0.0 | 226.2 | 226.2 |
| Revenues from Lottery Ticket Sales | 1,824.7 | 0.0 | 1,824.7 |
| Transfer from DOL Administrative Trust Fund | 2.3 | 8.2 | 10.5 |
| Revenues from Slot Machine Activity | 203.5 | 0.0 | 203.5 |
| Interest Earnings | 10.8 | 0.0 | 10.8 |
| Total 2019-20 Funds Available | <u>2,041.3</u> | <u>234.4</u> | <u>2,275.7</u> |
| EFFECTIVE APPROPRIATIONS 2019-20 | | | |
| Public Schools | 473.5 | 118.2 | 591.7 |
| Workforce Education | 81.4 | 0.0 | 81.4 |
| State University System | 382.7 | 0.0 | 382.7 |
| Florida College System | 150.2 | 0.0 | 150.2 |
| Bright Futures | 595.1 | 0.0 | 595.1 |
| Student Financial Assistance | 64.5 | 0.0 | 64.5 |
| SMART Schools/Classrooms First | 82.3 | 0.0 | 82.3 |
| Class Size Reduction/Debt Service | 133.4 | 0.0 | 133.4 |
| Other Education Facilities | 6.7 | 0.0 | 6.7 |
| Total 2019-20 Effective Appropriations | <u>1,969.8</u> | <u>118.2</u> | <u>2,088.0</u> |
| AVAILABLE RESERVES | 71.5 | 116.2 | 187.7 |
| FUNDS AVAILABLE 2020-21 | | | |
| Balance Forward from 2019-20 | 0.0 | 187.7 | 187.7 |
| Revenues from Lottery Ticket Sales | 1,901.1 | 0.0 | 1,901.1 |
| Transfer from DOL Administrative Trust Fund | 2.3 | 0.0 | 2.3 |
| Revenues from Slot Machine Activity | 206.0 | 0.0 | 206.0 |
| Interest Earnings | 10.4 | 0.0 | 10.4 |
| Total 2020-21 Funds Available | <u>2,119.8</u> | <u>187.7</u> | <u>2,307.5</u> |
| FUNDS AVAILABLE 2021-22 | | | |
| Revenues from Lottery Ticket Sales | 1,926.4 | 0.0 | 1,926.4 |
| Transfer from DOL Administrative Trust Fund | 2.3 | 0.0 | 2.3 |
| Revenues from Slot Machine Activity | 208.5 | 0.0 | 208.5 |
| Interest Earnings | 12.3 | 0.0 | 12.3 |
| Total 2021-22 Funds Available | <u>2,149.5</u> | <u>0.0</u> | <u>2,149.5</u> |
| FUNDS AVAILABLE 2022-23 | | | |
| Revenues from Lottery Ticket Sales | 1,948.5 | 0.0 | 1,948.5 |
| Transfer from DOL Administrative Trust Fund | 2.3 | 0.0 | 2.3 |
| Revenues from Slot Machine Activity | 211.1 | 0.0 | 211.1 |
| Interest Earnings | 13.1 | 0.0 | 13.1 |
| Total 2022-23 Funds Available | <u>2,175.0</u> | <u>0.0</u> | <u>2,175.0</u> |

This page left intentionally blank.

EDUCATIONAL ENHANCEMENT TRUST FUND

FINANCIAL OUTLOOK STATEMENT

Including Results of December 2019 Revenue Estimating Conferences and Other Adjustments as of January 10, 2020
FY 2019-20 through FY 2024-25
(\$ MILLIONS)

DATE: January 15, 2020

| | <u>RECURRING</u> | <u>NON- RECURRING</u> | <u>TOTAL</u> |
|---|------------------|---------------------------|--------------|
| FUNDS AVAILABLE 2023-24 | | | |
| Revenues from Lottery Ticket Sales | 1,999.5 | 0.0 | 1,999.5 |
| Transfer from DOL Administrative Trust Fund | 2.3 | 0.0 | 2.3 |
| Revenues from Slot Machine Activity | 213.7 | 0.0 | 213.7 |
| Interest Earnings | 13.5 | 0.0 | 13.5 |
| Total 2023-24 Funds Available | 2,229.0 | 0.0 | 2,229.0 |
| FUNDS AVAILABLE 2024-25 | | | |
| Revenues from Lottery Ticket Sales | 1,993.0 | 0.0 | 1,993.0 |
| Transfer from DOL Administrative Trust Fund | 2.3 | 0.0 | 2.3 |
| Revenues from Slot Machine Activity | 216.3 | 0.0 | 216.3 |
| Interest Earnings | 13.5 | 0.0 | 13.5 |
| Total 2024-25 Funds Available | 2,225.1 | 0.0 | 2,225.1 |