

External Factors Review: GRADE 3 FCAT READING 2005, 2006, 2007



Florida Department of Education
Jeanine Blomberg, Commissioner

Jay Pfeiffer, Deputy Commissioner
June 1, 2007

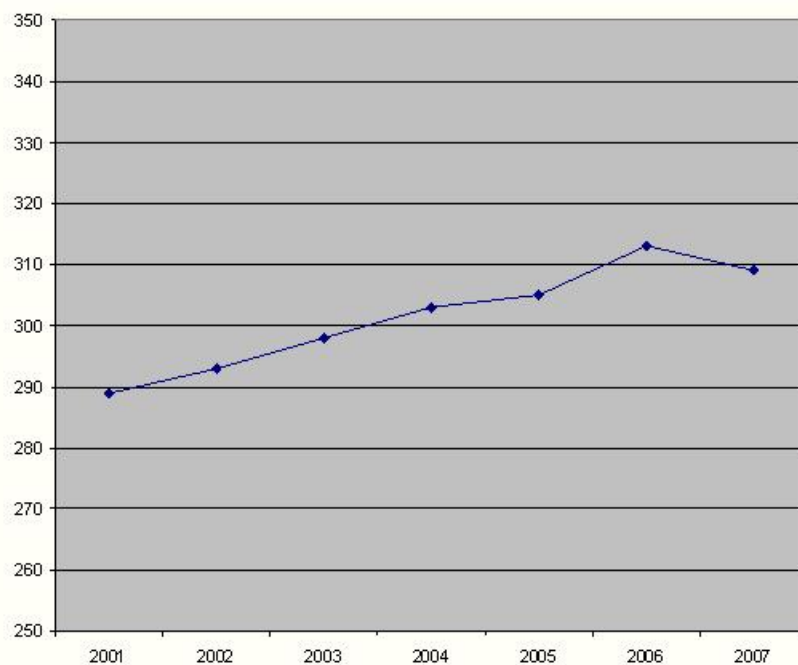


Basic Issues Impacting Results

- ▶ The Population of Test Takers
 - ▶ The Testing Processes
 - ▶ Instructional Changes
-



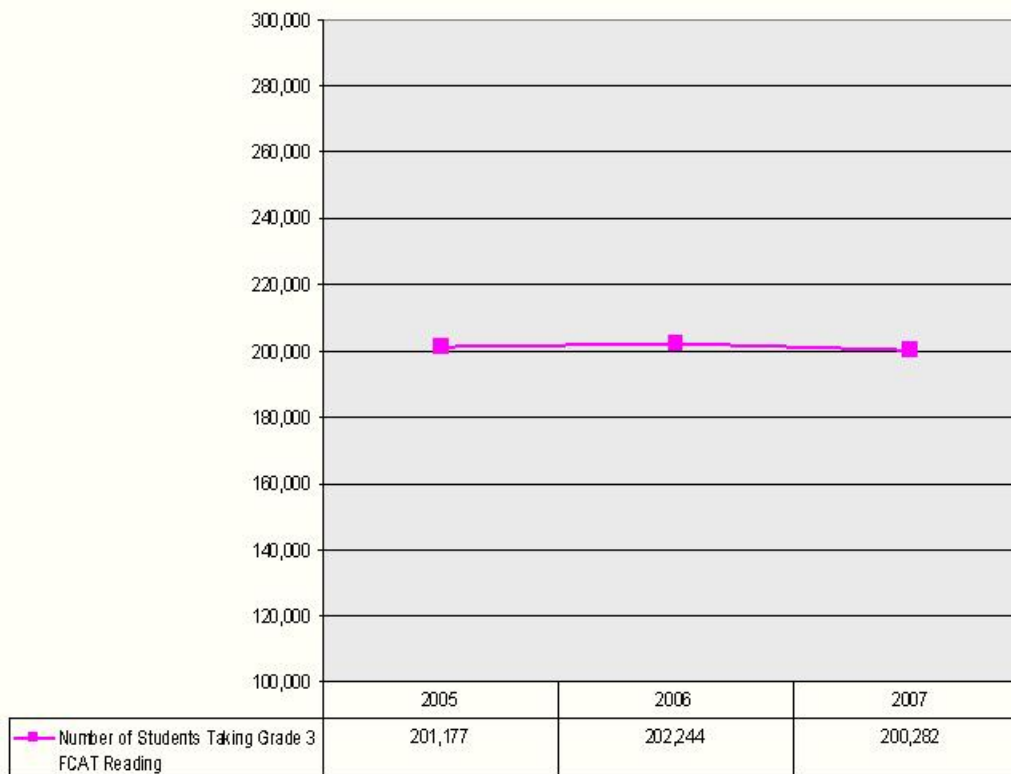
FCAT Reading, Grade 3 Scale Scores 2001-2007





Grade 3

FCAT Reading Test Takers

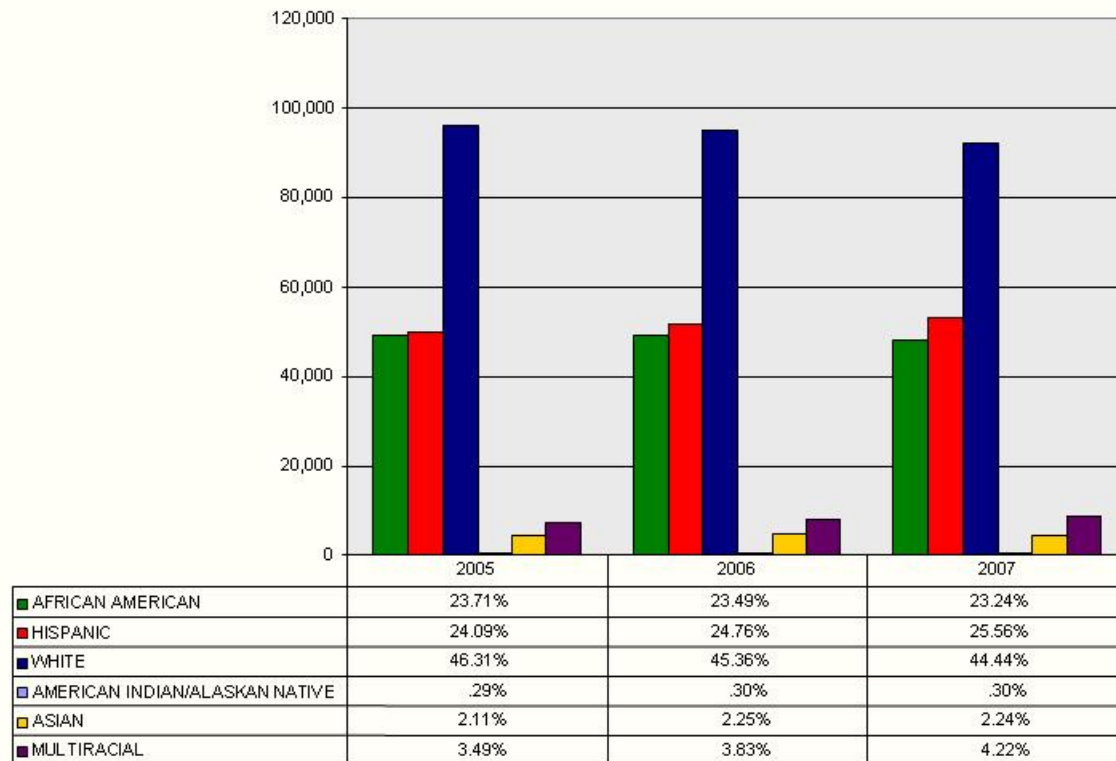


*Enrollment is based on Survey 3 data for all years.

**2007 represents preliminary enrollment data.



Grade 3 Students Enrolled by Race



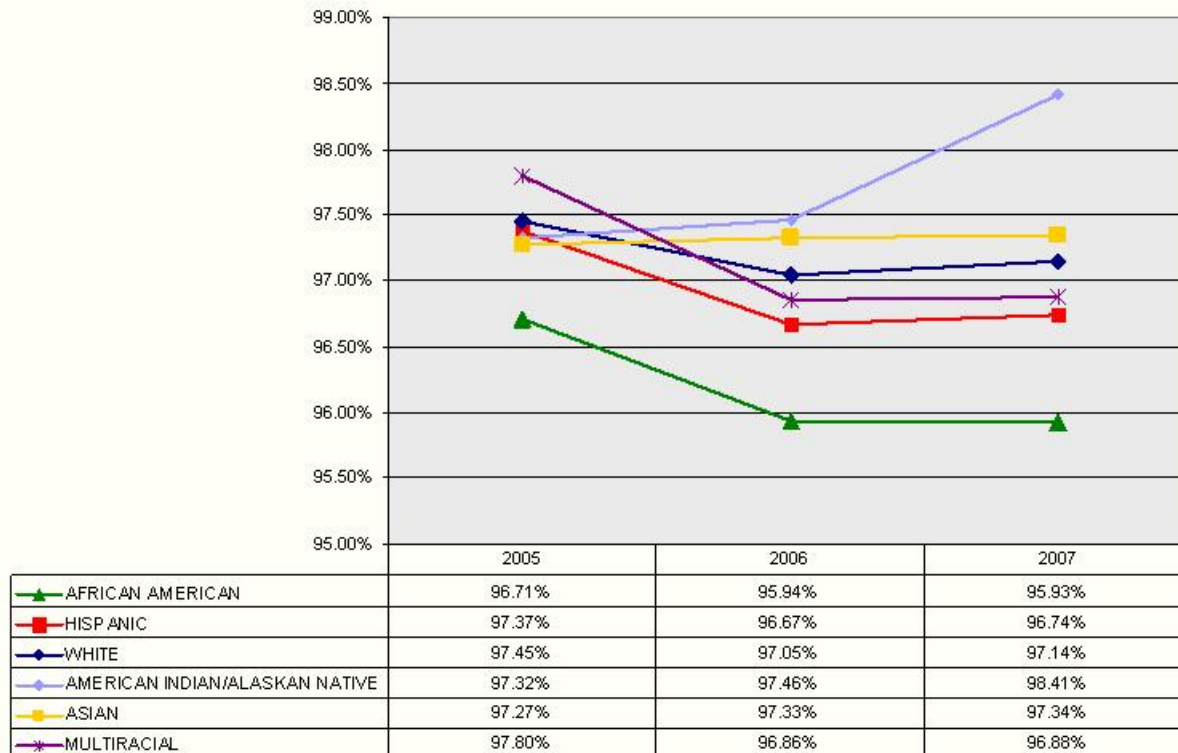
*Enrollment is based on Survey 3 data for all years.

**2007 represents preliminary enrollment data.



FCAT Reading, Grade 3

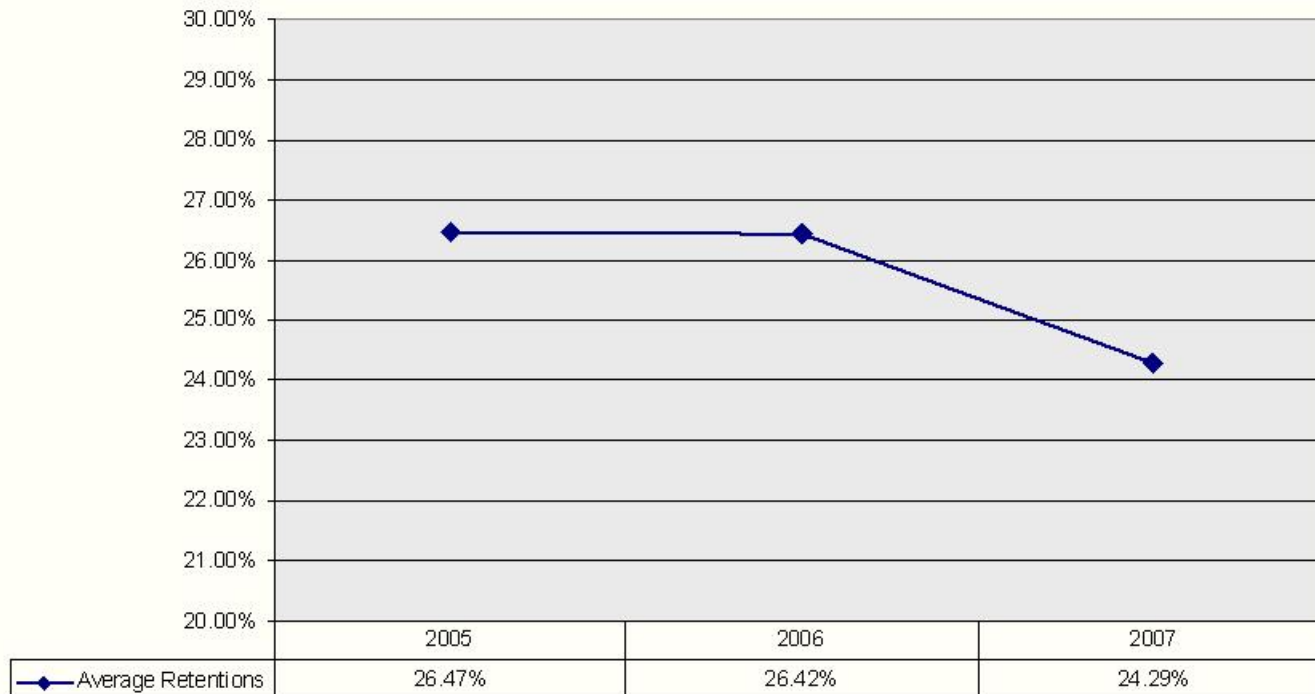
Percentage of Students Tested by Race





FCAT Reading, Grade 3

Percentage of Students Retained in Prior Years

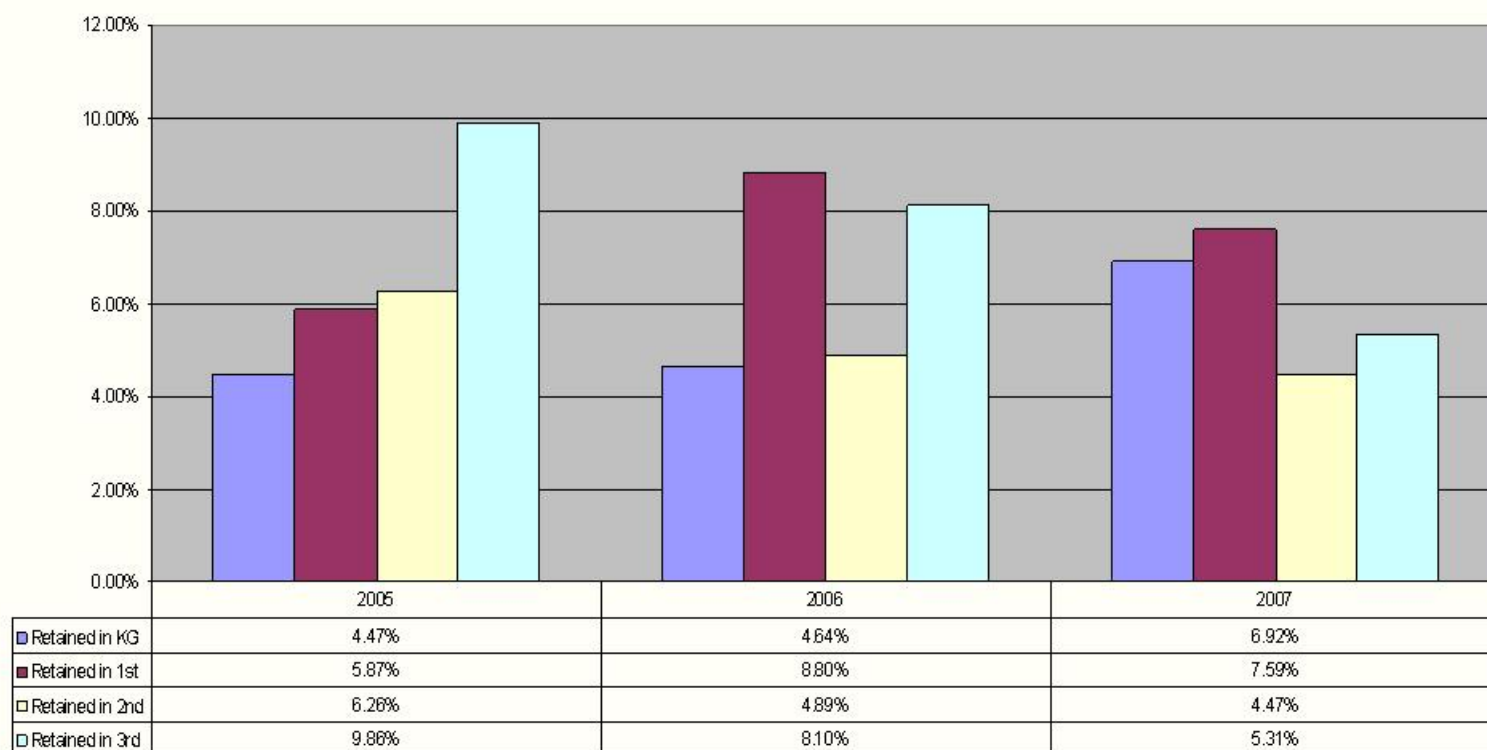


*2007 represents preliminary data.



FCAT Reading, Grade 3

Percentage of Test Takers by Year Retained

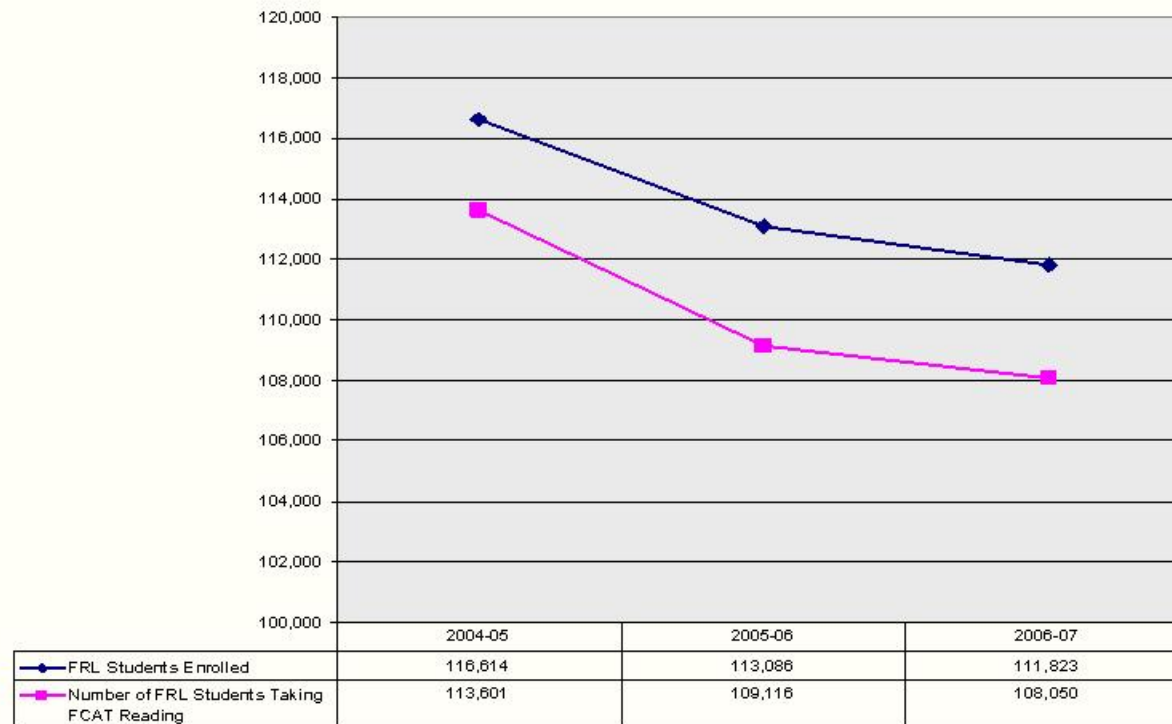


*2007 represents preliminary data.



Grade 3

Free and Reduced Lunch Number of Students Enrolled and Taking FCAT Reading



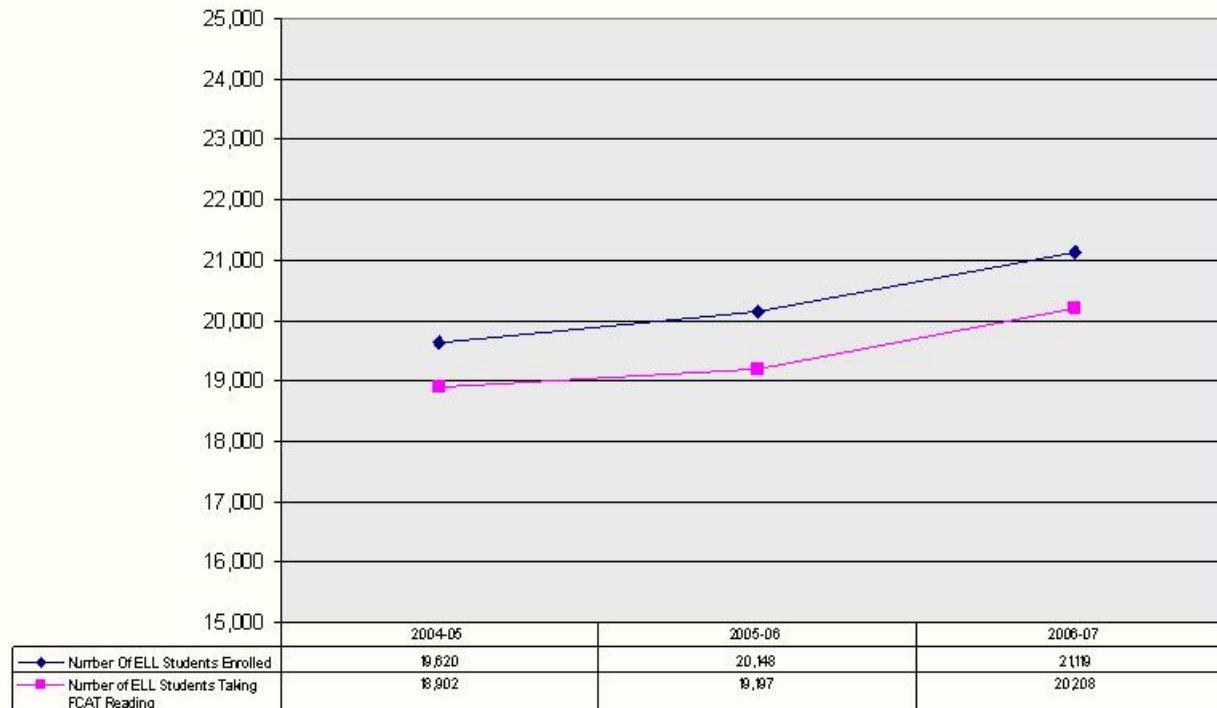
*Enrollment is based on Survey 3 data for all years.

**2007 represents preliminary enrollment data.



Grade 3

Enrolled English Language Learners Number of Students Enrolled and Taking FCAT Reading



*Enrollment is based on Survey 3 data for all years.

**2007 represents preliminary enrollment data.



Grade 3

Students With Disabilities Enrolled and Taking FCAT Reading



*Enrollment is based on Survey 3 data for all years.

**2007 represents preliminary enrollment data.



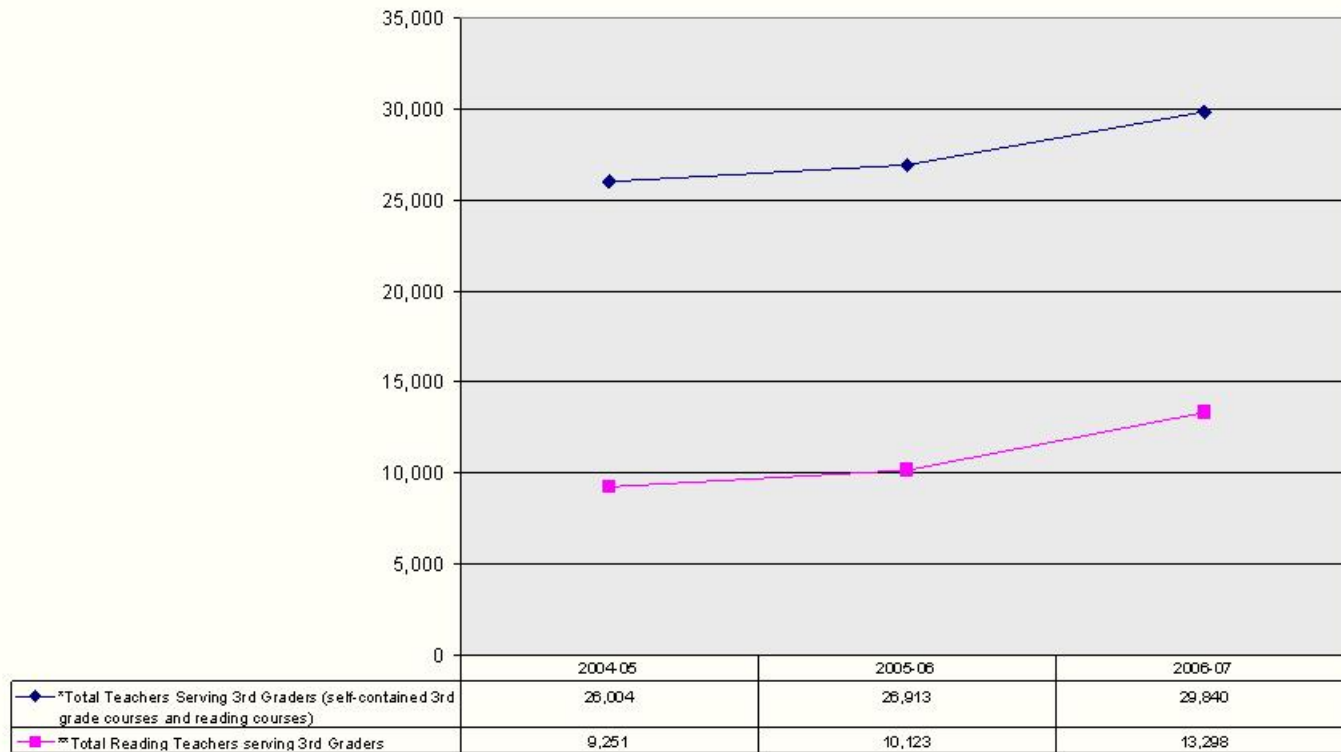
Percentage of Students in October Who were Present in February



*2006-07 data not available.



Number of Teachers and Reading Teachers Serving Grade 3

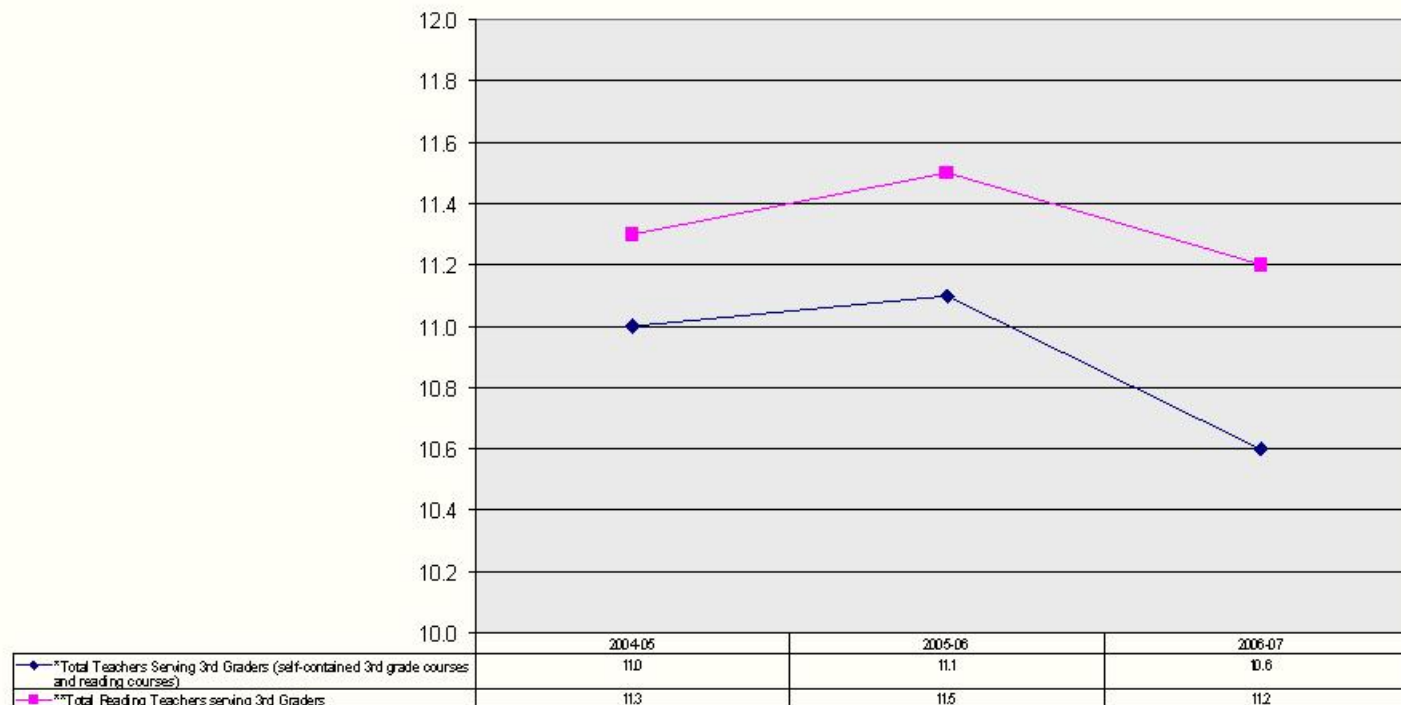


*Student courses include: Third Grade (Self-Contained, English for Speakers of Other Language, Language Arts, Elementary), Integrated Language Arts – Elementary, Reading – Elementary, Reading: K-5 – ESE, and Academics: K-5 – ESE

** Student courses include only: Reading - Elementary, Reading: K-5 - ESE, and Functional Basic Skill in Reading - Elementary



Teachers and Reading Teachers Serving Grade 3 Years of Experience

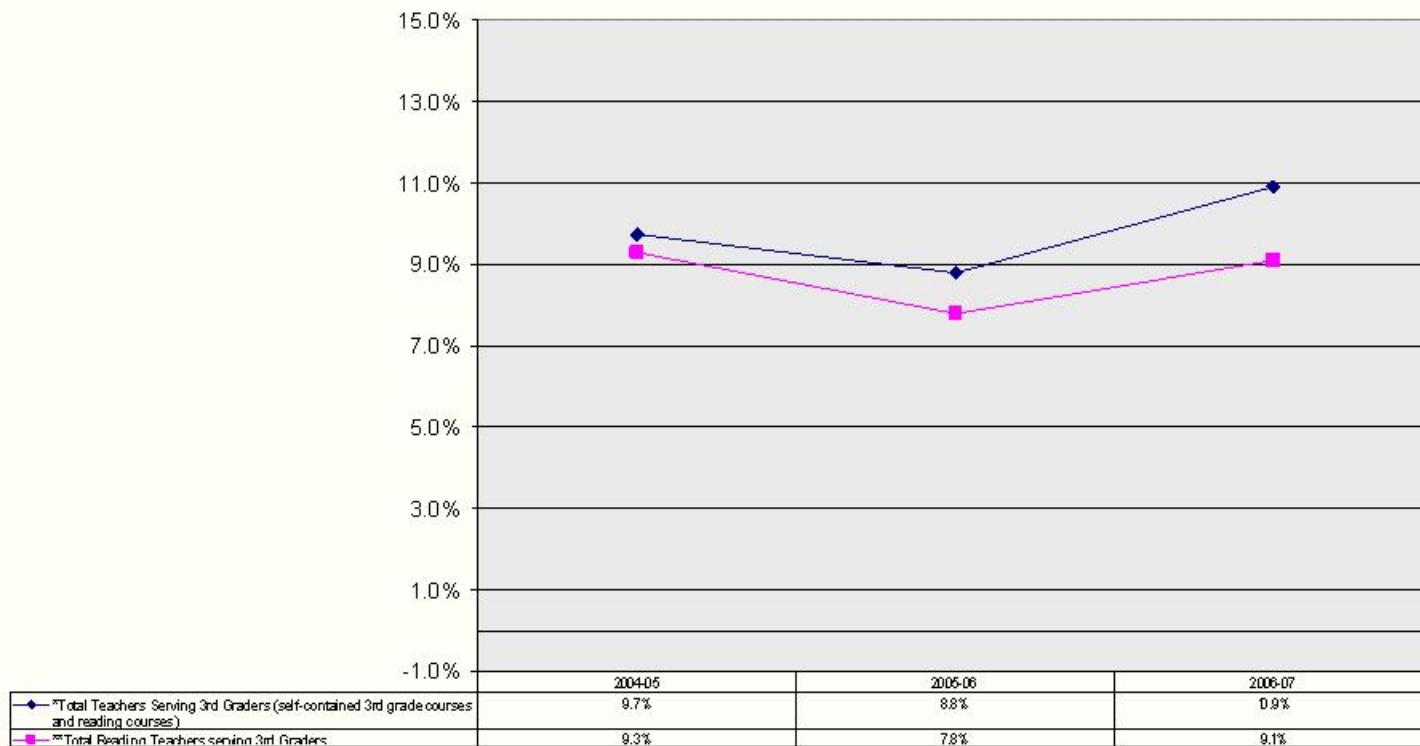


*Student courses include: Third Grade (Self-Contained, English for Speakers of Other Language, Language Arts, Elementary), Integrated Language Arts – Elementary, Reading – Elementary, Reading: K-5 – ESE, and Academics: K-5 – ESE

** Student courses include only: Reading - Elementary, Reading: K-5 - ESE, and Functional Basic Skill in Reading - Elementary



Teachers and Reading Teachers Serving Grade 3 Percentage of Beginning Teachers

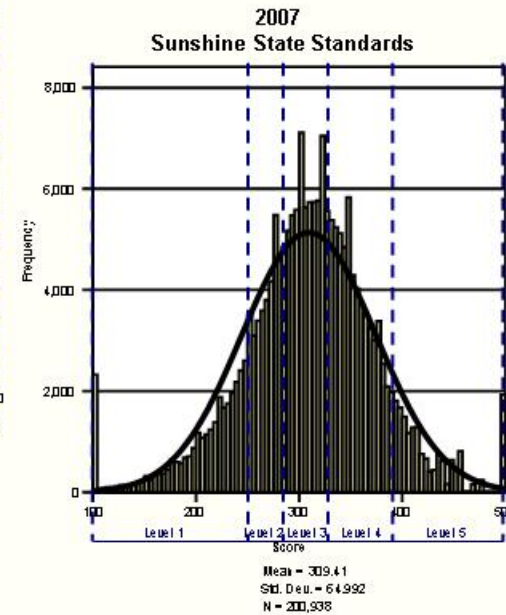
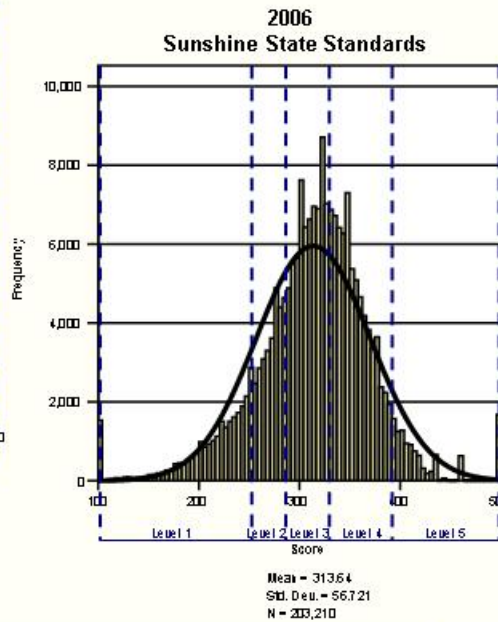
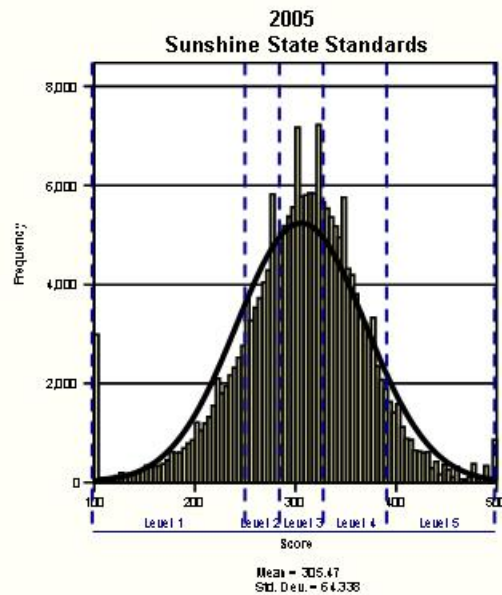


*Student courses include: Third Grade (Self-Contained, English for Speakers of Other Language: Language Arts, Elementary), Integrated Language Arts – Elementary, Reading – Elementary, Reading: K-5 – ESE, and Academics: K-5 – ESE

** Student courses include only: Reading - Elementary, Reading: K-5 - ESE, and Functional Basic Skill in Reading - Elementary



Sunshine State Standards



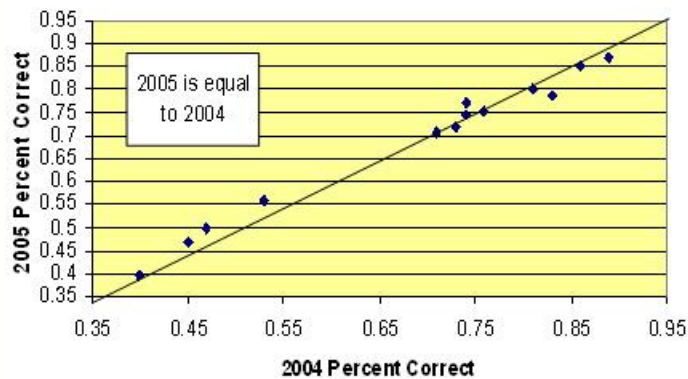
Level 1	Level 2	Level 3	Level 4	Level 5
100-258	259-283	284-331	332-393	394-500



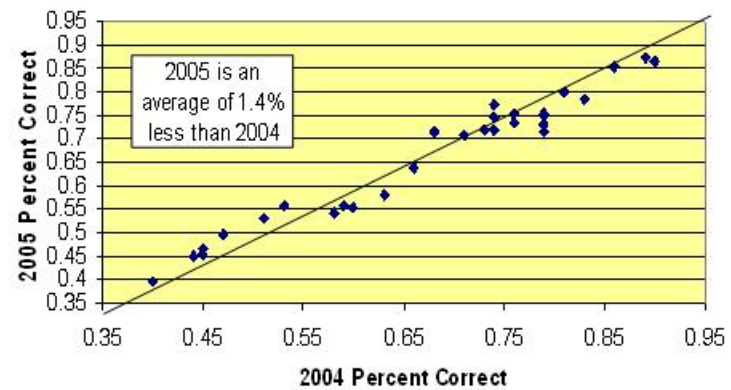
FCAT Reading, Grade 3

2004 to 2005 Anchor Items and Common Items

Percent of Correct Answers on FCAT Grade 3
2004 to 2005 Reading -- 14 Anchor Items



Percent of Correct Answers on FCAT Grade 3
2004 to 2005 Reading - All 30 Common Items

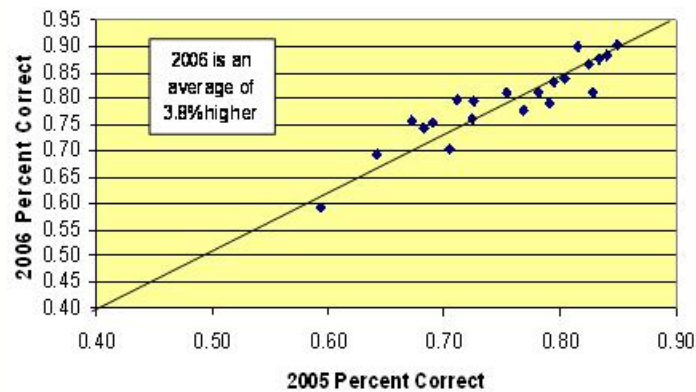




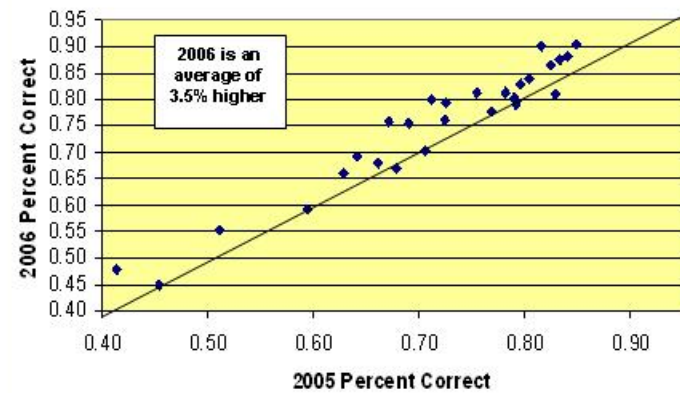
FCAT Reading, Grade 3

2005 to 2006 Anchor Items and Common Items

Percent of Correct Answers on FCAT Grade 3
2005 to 2006 Reading – 21 Anchor Questions



Percent of Correct answers on FCAT Grade 3
2005 to 2006 Reading – All 29 Common Questions





FCAT Reading, Grade 3

2005 to 2007 Anchor Items

