







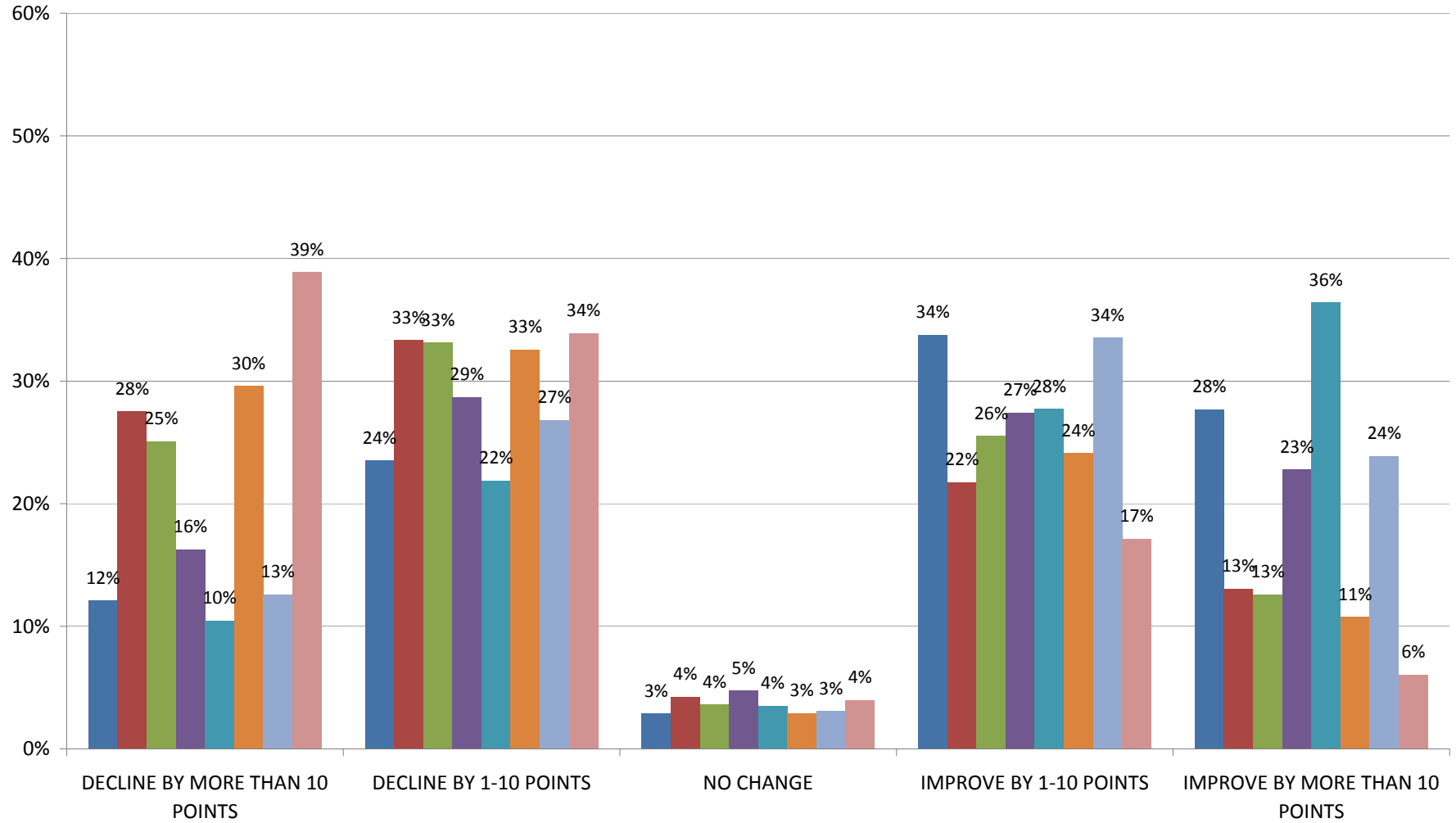






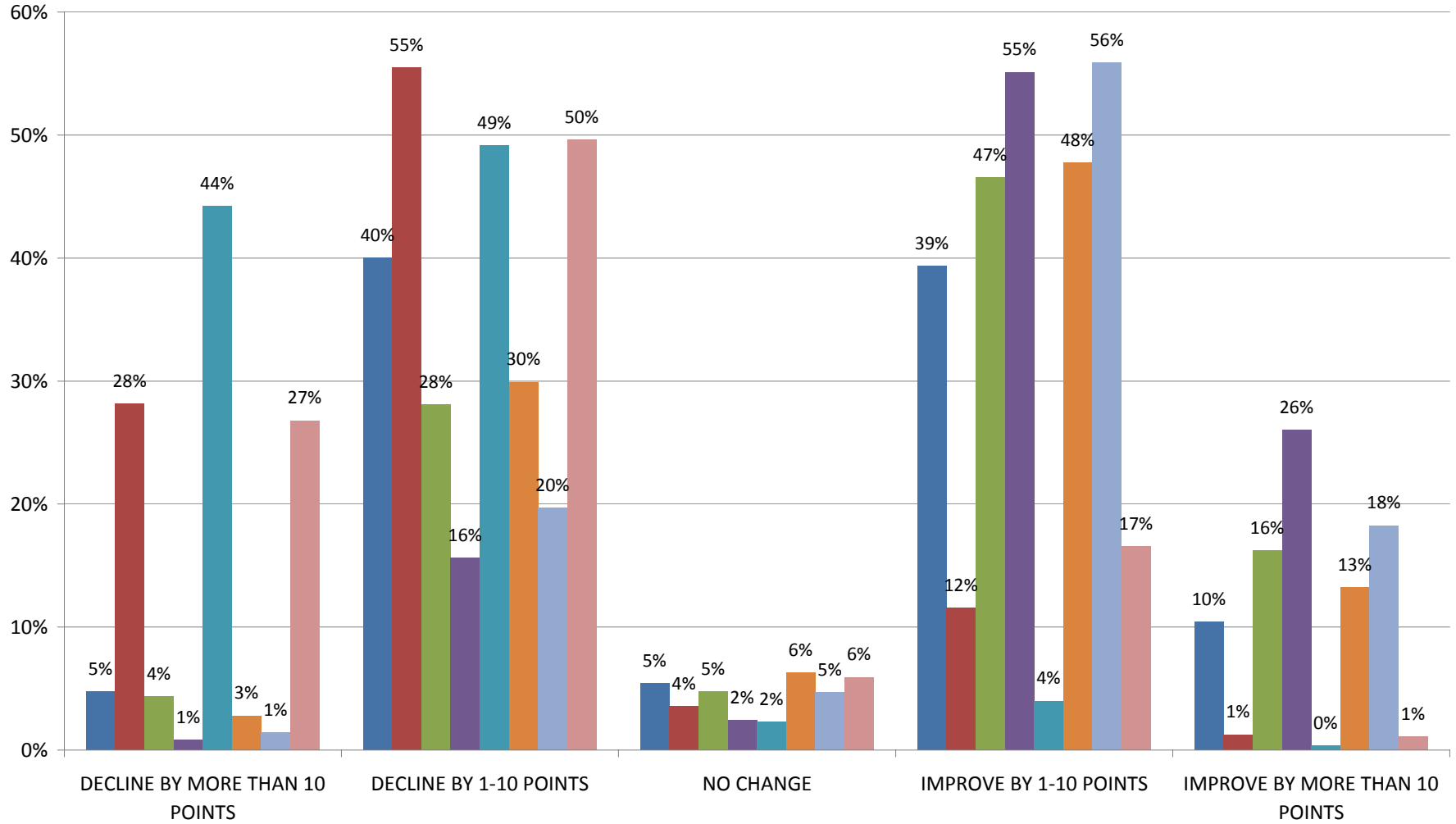
## Percent of Schools Improving or Declining in the Reading Learning Gains of the Low 25% Component of School Grades, by Magnitude of Change, 2003 to 2010 - ELEMENTARY SCHOOLS

■ 02 TO 03   
 ■ 03 TO 04   
 ■ 04 TO 05   
 ■ 05 TO 06   
 ■ 06 TO 07   
 ■ 07 TO 08   
 ■ 08 TO 09   
 ■ 09 TO 10



## Percent of Schools Improving or Declining in the Reading Learning Gains of the Low 25% Component of School Grades, by Magnitude of Change, 2003 to 2010 - MIDDLE SCHOOLS

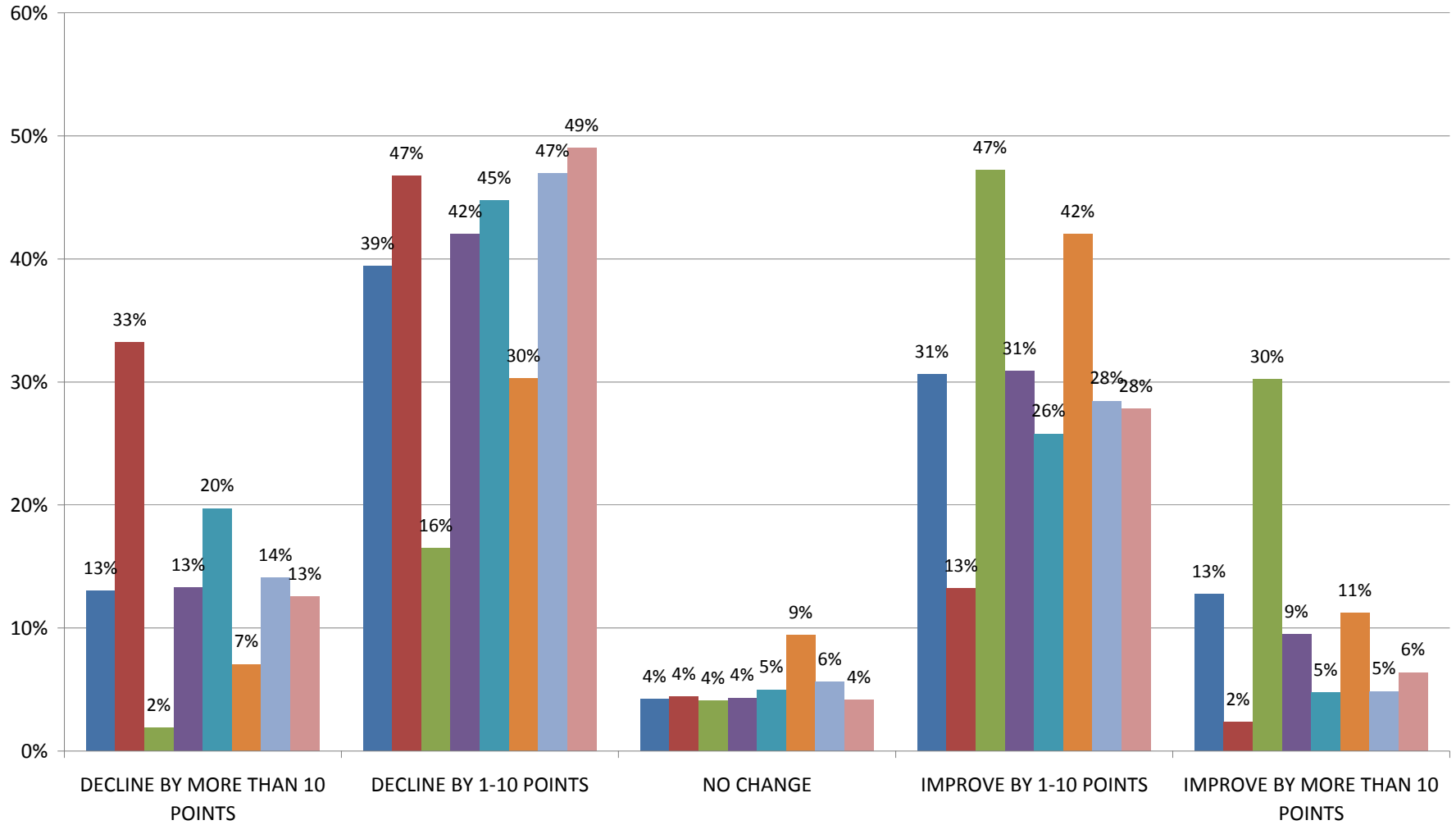
■ 02 TO 03   
 ■ 03 TO 04   
 ■ 04 TO 05   
 ■ 05 TO 06   
 ■ 06 TO 07   
 ■ 07 TO 08   
 ■ 08 TO 09   
 ■ 09 TO 10





## Percent of Schools Improving or Declining in the Reading Learning Gains of the Low 25% Component of School Grades, by Magnitude of Change, 2003 to 2010 - HIGH SCHOOLS

■ 02 TO 03   
 ■ 03 TO 04   
 ■ 04 TO 05   
 ■ 05 TO 06   
 ■ 06 TO 07   
 ■ 07 TO 08   
 ■ 08 TO 09   
 ■ 09 TO 10



Percent of Schools Improving or Declining in the Mathematics Learning Gains of the Low 25% Component of School Grades, 2008 to 2010

	07 TO 08	08 TO 09	09 TO 10
ELEMENTARY			
DECLINE BY MORE THAN 10 POINTS	325	387	487
DECLINE BY 1-10 POINTS	492	511	507
NO CHANGE	65	53	62
IMPROVE BY 1-10 POINTS	468	459	387
IMPROVE BY MORE THAN 10 POINTS	329	297	288
	1679	1707	1731
ELEMENTARY	07 TO 08	08 TO 09	09 TO 10
DECLINE BY MORE THAN 10 POINTS	19%	23%	28%
DECLINE BY 1-10 POINTS	29%	30%	29%
NO CHANGE	4%	3%	4%
IMPROVE BY 1-10 POINTS	28%	27%	22%
IMPROVE BY MORE THAN 10 POINTS	20%	17%	17%
	100%	100%	100%
MIDDLE	07 TO 08	08 TO 09	09 TO 10
DECLINE BY MORE THAN 10 POINTS	10	53	17
DECLINE BY 1-10 POINTS	147	282	176
NO CHANGE	32	30	31
IMPROVE BY 1-10 POINTS	287	173	274
IMPROVE BY MORE THAN 10 POINTS	62	15	58
	538	553	556
MIDDLE	07 TO 08	08 TO 09	09 TO 10
DECLINE BY MORE THAN 10 POINTS	2%	10%	3%
DECLINE BY 1-10 POINTS	27%	51%	32%
NO CHANGE	6%	5%	6%
IMPROVE BY 1-10 POINTS	53%	31%	49%
IMPROVE BY MORE THAN 10 POINTS	12%	3%	10%
	100%	100%	100%

HIGH	07 TO 08	08 TO 09	09 TO 10
DECLINE BY MORE THAN 10 POINTS	11	96	43
DECLINE BY 1-10 POINTS	82	197	161
NO CHANGE	10	15	21
IMPROVE BY 1-10 POINTS	216	70	146
IMPROVE BY MORE THAN 10 POINTS	64	12	35
	383	390	406
HIGH	07 TO 08	08 TO 09	09 TO 10
DECLINE BY MORE THAN 10 POINTS	3%	25%	11%
DECLINE BY 1-10 POINTS	21%	51%	40%
NO CHANGE	3%	4%	5%
IMPROVE BY 1-10 POINTS	56%	18%	36%
IMPROVE BY MORE THAN 10 POINTS	17%	3%	9%
	100%	100%	100%
COMBINATION	07 TO 08	08 TO 09	09 TO 10
DECLINE BY MORE THAN 10 POINTS	14	39	32
DECLINE BY 1-10 POINTS	57	80	72
NO CHANGE	6	15	14
IMPROVE BY 1-10 POINTS	83	61	72
IMPROVE BY MORE THAN 10 POINTS	44	12	26
	204	207	216
COMBINATION	07 TO 08	08 TO 09	09 TO 10
DECLINE BY MORE THAN 10 POINTS	7%	19%	15%
DECLINE BY 1-10 POINTS	28%	39%	33%
NO CHANGE	3%	7%	6%
IMPROVE BY 1-10 POINTS	41%	29%	33%
IMPROVE BY MORE THAN 10 POINTS	22%	6%	12%
	100%	100%	100%