



Career Dual Enrollment Best Practices

Tuesday, February 1, 2022, 1:00-3:00 p.m. EDT

Alexandria Armstrong
Director, Career Education & Articulation

Yolanda Singletary
Educational Policy Analyst



FLORIDA DEPARTMENT OF
EDUCATION
fldoe.org

Webinar Logistics

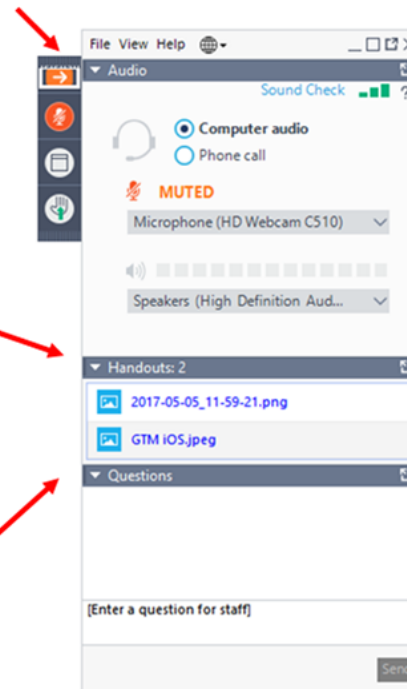
Participants will be on mute for the duration of the webinar.

Material from today's webinar:

In the handouts area you will find a copy of today's presentation.

How to submit questions:

To submit questions during the webinar, please utilize the Questions function. During the Q&A portion of the webinar, questions will be addressed.



Agenda

- Introduction of Panelists
- Panelist Presentations
 - Broward College
 - Osceola Technical College
 - Northwest Florida State College
 - Lorenzo Walker Technical College
- Questions and Answers



FLORIDA DEPARTMENT OF
EDUCATION
fldoe.org

Broward College

- **Broward College**
- **Broward County
Public Schools**

WORKFORCE DUAL ENROLLMENT



BROWARD COLLEGESM

OVERVIEW

- WDE Defined
- Program Design
- Articulation
- Recruitment
- Challenges
- Contact Information

WHAT IS WORKFORCE DUAL ENROLLMENT?

- Partnership between BC and BCPS
- Pathway to Industry Certifications
- Employment in High Skill, High Wage Careers
- Expand Access
- Eligibility Requirements
 - 2.5 unweighted HS GPA
- Aviation and Marine



A photograph of a classroom where several students are raising their hands. The focus is on the hands in the foreground, with a blurred background showing a teacher and other students. The text 'PROGRAM DESIGN' is overlaid in yellow on the left side of the image.

**PROGRAM
DESIGN**

PROGRAM DESIGN

- 3-Year Program (10th, 11th and 12th Grade)
- Extended School Day
- Transportation
- Program located at Broward College
- Aviation - Technical Certificates for FAA Aircraft Maintenance, Airframe/Powerplant, & Aircraft Mechanics
- Marine – Technical Certificates in Marine Electrician, Propulsion, Technology or Systems.

A photograph of a classroom where several students are raising their hands. The focus is on the hands in the foreground, with a blurred background showing a teacher and other students. The word "ARTICULATION" is overlaid in yellow text on the lower left side of the image.

ARTICULATION

AVIATION

- Airframe & Powerplant
FAA Certification
- A.S. Aviation
Maintenance
- B.S. Aerospace Sciences

**These are exit points in the program in which the student has employable skills to enter the workforce or career.*

SITE	YEAR	COURSE Name	Credits / Hours
HIGH SCHOOL	10 th Grade	General 1 (WDE Workforce Dual Enrollment) <i>*FAA General Industry Certification</i>	12 credits
	11 th Grade	Airframe 1 (WDE Workforce Dual Enrollment)	12 credits
	12 th Grade	Airframe 2 (WDE Workforce Dual Enrollment) <i>*FAA Airframe Industry Certification</i>	12 credits
BROWARD COLLEGE: YEAR 1	BC1, Fall	Powerplant 1	12 credits
	BC1 Spring	Powerplant 2 <i>*FAA Powerplant Industry Certification</i>	12 credits
	BC1 Summer	General Education classes for AS degree	12 credits
BROWARD COLLEGE: YEAR 2	BC2, Fall	General Education Classes for AS degree General Education classes for AA degree <i>*earn AS Aviation Management degree</i>	11 credits 3 credits
	BC2, Spring	General Education Classes for AA degree General Education classes for BS degree <i>enroll in BS Aerospace Sciences program</i> <i>*earn AA degree</i>	6 credits 9 credits
	BC2, Summer	General Education classes for BS degree	12 credits
BROWARD COLLEGE: YEAR 3	BC3, Fall	General Education classes for BS degree	15 credits
	BC3, Spring	General Education classes for BS degree	12 credits
	BC3, Summer	General Education classes for BS degree <i>*earn BS Aerospace Sciences degree</i>	12 credits

MARINE

- A.A.S. in Marine Engineering Management
- Broward College - Bachelor of Applied Science in Supervision and Management.

YEAR 1 10 th grade	FALL	MTE1004C	Introduction to Marine Technology	12 credits TC1 <i>Marine Electrical Certification</i>
		MTE1400C	Marine Electricity (DC)	
	SPRING	MTE2420C	Advanced Electrical Systems (AC)	
		MTE2490C	Marine Electronics	
YEAR 2 11 th grade	FALL	MTE1040C	Marine Diesel 1	12 credits TC2 <i>Marine Diesel Certification</i> <i>Gasoline Engine Certification</i>
		MTE2041C	Marine Diesel 2	
	SPRING	MTE1073C	Gasoline Engine Diagnostics & Repair	
		MTE2234C	I/O, Outboard, and Sail Drive	
YEAR 3 12 th grade	FALL	MTE2541C	Marine Auxiliary Equipment	12 credits (in HS) 3 credits (@ BC) TC3 & TC4 <i>Marine Systems Certification</i>
		MTE1543C	Marine Auxiliary 2	
	SPRING	MTE1062C	Marine Corrosion & Prevention	
		MTE1312C	Advanced Marine Composites	
POST-GRADUATION	@ Broward College	MTE1651C	Basic Welding	AAS DEGREE Marine Engineering Management
		MTE2949	Internship	
		ENC1101	English Comp 1	
		Elective (3)	Elective Courses (3)	
		GE Courses (3)	Math or Natural Science Humanities Course Social Science Course	
		SPC1024 <i>or</i> SPC1608	Intro to Speech Communications <i>or</i> Intro to Public Speaking	

A photograph of a classroom where several students are raising their hands. The focus is on the hands in the foreground, with a blurred background showing a teacher and other students. The word "RECRUITMENT" is overlaid in yellow text on the lower left side of the image.

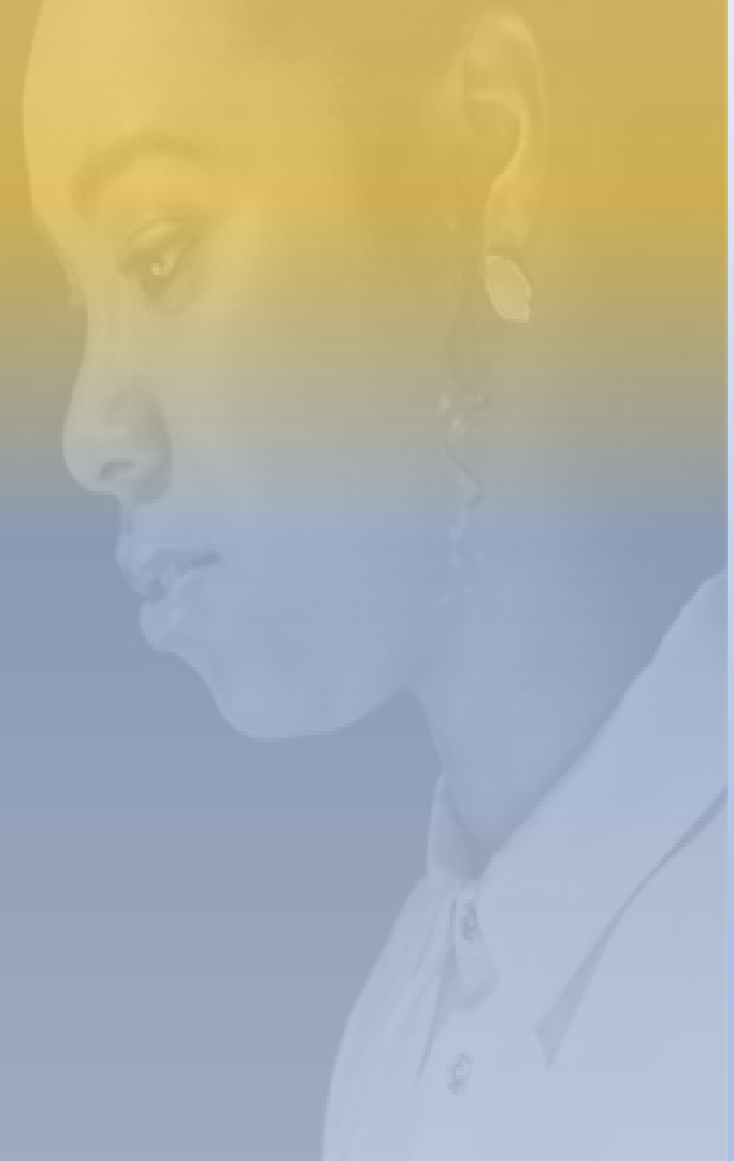
RECRUITMENT

RECRUITMENT

- Target schools near BC South Campus
- Target non-traditional DE students
- Schools identify students with GPA
- Schools do an interest intake survey
- BC visits schools for information sessions
- BC hosts Open House at South Campus
 - Students and Parents

CHALLENGES

- 4-Year Degree Stigma
- Transportation
- FAA Seat Time
- Food
- Instructors
- Pandemic



CONTACTS

James Payne

Broward County Public Schools

Director

Career, Technical, Adult &
Community Education

james.payne@browardschools.com

754-321-8400

www.browardschools.com

www.broward.edu/dual

Alexis Kitchman

Broward College

Senior Director, Dual Enrollment

akitchma@broward.edu

954-201-7137

Russell McCaffrey

Broward College

Dean, Transportation

Programs

rmccaffe@broward.edu

954-201-8085



FLORIDA DEPARTMENT OF
EDUCATION
fldoe.org

Q&A



FLORIDA DEPARTMENT OF
EDUCATION
fldoe.org

Osceola Technical College



Osceola Technical College

Career Dual Enrollment

Panelist: Patricia Collins,
Principal

Panelist: Jennifer L.
Aviles, Dual Enrollment
Coordinator



Agenda:



Eligibility Requirements,
Program Completion &
Certifications



MOU for processing
admission, withdraws
and grade reporting



Articulation Agreement
between district, high
schools & colleges



Orientation,
Transportation, Grades
& Communication



Resources

Starting/Expanding Career Dual Enrollment Programs

Application Process: Paper-based Application

All prospective students must complete the Dual Enrollment application available on the school's website or pick up a paper copy from their respective School Counselor.

- The application must be signed by the student's parent/guardian and the school counselor.
- Once the appropriate signatures have been obtained the school counselor will either scan the information over to the Dual Enrollment Coordinator or the Coordinator will pick up the information.
- Only approved applications should be scanned over to the Coordinator.
- The Coordinator will send an email confirmation that the application is on file.
- Email bi-weekly updates of any changes to program offerings, schedule changes, transportation availability, student expectations, etc.

Enrollment

When a student is accepted to a program at Osceola Technical College, he/she will receive one of three letters: accepted, waitlisted or denied.

- A formal decision letter is sent to the student's designated high school to be personally delivered to them by their Academic Counselor.
- A copy of the letter is also sent to the student's assigned district email.
- Mandatory orientation is offered virtually during evening hours to encourage parent participation.
- To confirm the student's plan to attend, a registration email is sent and he/she must confirm their attendance via a link in the email.
- If a waitlisted letter is sent, it will notify the student that the Coordinator will contact them when availability of a particular program becomes available.
- A denial letter will explain to the student as to why they were not accepted into the program.

Program Completion & Certifications

- Students are required to take the industry certifications attached to their program. These tests are program mandates and assist the student in securing employment opportunities.
- Upon completion of the program, students will leave with the certification in their career industry.
- Most certifications are provided on campus, but it is possible that students will have to take a certification at an off-campus testing site. If this happens, a field trip is organized to transport student to and from the testing site.



Best Practices: MOU, Admissions, Withdraws, Grade Reporting



KISSIMMEE CAMPUS | 407-344-5080
501 Simpson Road, Kissimmee, FL 34744
POINCIANA CAMPUS | 407-343-7341
1030 Cypress Parkway, Kissimmee, FL 34759
ST. CLOUD CAMPUS | 407-343-7342
2901 17th Street, St. Cloud, FL 34769

Patricia Collins
PRINCIPAL

Eugene French
ASSISTANT PRINCIPAL
KISSIMMEE CAMPUS

Dr. Juanita McCall
ASSISTANT PRINCIPAL
KISSIMMEE CAMPUS

Esther Towers
ASSISTANT PRINCIPAL
POINCIANA CAMPUS

Sheryl Reyes-Cuevas
ASSISTANT PRINCIPAL
ST. CLOUD CAMPUS

A Proud Member of:



**SCHOOL DISTRICT OF
OSCEOLA COUNTY**
Debra Pace
SUPERINTENDENT
407-870-4008

Teresa "Terry" Castillo
Vice Chair
District 1 – Kissimmee
407-577-5022

Julius Melendez
District 2 – Kissimmee
321-442-2882

Jon Arguello
District 3 – Kissimmee
407-453-6092

Clarence Thacker
Chair
District 4 – Kissimmee
407-870-4009

Robert Bass
District 5 – St. Cloud
407-870-4009

Career Dual Enrollment Expectations

This is my official notification that I will participate in the Dual Enrollment Program with Osceola Technical College (oTECH). The purpose of this document is to establish an agreement between the student, parents, and Osceola Technical College for the following:

- Participation in the Career Dual Enrollment program.
- The postsecondary institution specifies dates that permit students to drop a course without penalty, known as "drop-add". The drop/add period is the first week of class. If a student drops within this approved timeframe, the dual enrollment course is not recorded to the postsecondary transcript. If the student withdraws after the college "drop-add" deadline, the postsecondary transcript will indicate a "W" or an "F" code for the course(s), depending on the date of withdrawal during the term. State Board Rule 6A-1.09941, F.A.C., State Uniform Transfer of High School Credits, establishes uniform procedures related to the high school's acceptance of transfer credit for students in Florida's public schools.
- A postsecondary institution shall assign letter grades to each student enrolled in a dual enrollment course. The letter grade assigned by the postsecondary institution shall be posted to the student's high school transcript by the school district. A grade is not assigned until the end of the course.
- If for any reason the student must withdrawal from the program, Osceola Technical College must receive notification prior to any schedule changes at their high school.
- Any letter grade below a "C" will not count as credit toward satisfaction of the requirements in Rule 6A-10.030, F.A.C.; however, all grades are calculated in a student's GPA and will appear on their college transcript.
- All grades, including "W" for withdrawal, become a part of the student's permanent college transcript and may affect subsequent postsecondary

WWW.OSCEOLATECHNICALCOLLEGE.COM



KISSIMMEE CAMPUS | 407-344-5080
501 Simpson Road, Kissimmee, FL 34744
POINCIANA CAMPUS | 407-343-7341
1030 Cypress Parkway, Kissimmee, FL 34759
ST. CLOUD CAMPUS | 407-343-7342
2901 17th Street, St. Cloud, FL 34769

admission.

- Students that will use their own vehicle will follow all campus parking and driving rules.
- All books must be returned to the bookstore at the end of each semester. Students are responsible to pay for or replace any lost or damaged books.
- All students must dress in uniform based on the specific program requirements listed in the course syllabus.
- All students must adhere to the standards established by oTECH's Student Conduct Policies and Procedures available on our school website.
- Dual enrollment courses taught on a high school campus shall ensure minimal interruptions of instructional time. A student shall lose eligibility to participate in dual enrollment if the secondary institution where a course is being offered determines that a student is being disruptive to the learning process, such that the progress of other students and the efficient administration of the course are hindered.
- Students are expected to be in class on time. There are no excused or unexcused absences. Any student with 6 consecutive absences must be withdrawn.
- Students utilizing transportation provided by the Osceola County Transportation Department will be removed from receiving services due to poor attendance and/or disciplinary action. Students with 6 or more consecutive absences are no longer eligible to receive transportation and will be required to provide their own transportation to continue participation in the program.
- Students that are currently enrolled in a course but will not be able to complete because the last day of the academic school year does not permit the student to complete the scheduled hours, must return the following semester to complete the remaining hours to receive credit for course completion. Students that do not return to complete the course will have an "F" reported on the transcript.

WWW.OSCEOLATECHNICALCOLLEGE.COM

Challenges

- District-funded transportation, budget constraints & student ridership.
- Training high school counselors to identify students that have met graduation requirements to participate.
- Completion rates for accreditation.
- Align bell schedule with the high schools for students to complete hours.
- Selecting programs students will complete prior to graduation based scheduled clock hours.
- Keeping documentation for each student; paper based vs. spreadsheet.

Marketing Strategies for Recruitment

- Create a Career Dual Enrollment webpage with the requirements, admissions process, available programs, etc.
- Monthly emails to counselors with updates regarding acceptances.
- Over communicate with parents and students. Emails have been most effective in providing updates and keeps the communications organized.
- Establish relationships and partnerships with all local, public, private, parochial, academic school counselors, college and career counselors, and charter schools in Osceola County.
 - Attend community events that provides the opportunity to recruit potential students.
 - Record informational sessions with instructors to promote their program and share with the college and career counselors.
 - Provide virtual, in-person, and email correspondence as a communication platform to learn about program offerings.
 - Email monthly marketing flyers about our programs to the students directly.
 - Post on Remind for all high schools, flyers of your programs.
 - Present to seniors directly with program offerings every semester.
 - Attend SAC meetings, report card nights, curriculum nights and any other events that afford them the opportunity to recruit potential students.

Articulation Agreement between District, High Schools and Colleges

- Articulation agreement is available for most programs after completion of the program and attainment of all certifications associated with the program.
- Articulation Link: [District Articulation](#)
- Articulation Link: <https://valenciacollege.edu/academics/programs/as-degree/credit-otec.php>

TECH EXPRESS TO VALENCIA OFFERS

Access to a Valencia Tech Express Advisor located on your Technical College campus who can assist you with the following:

- Understanding the benefits of Tech Express and explaining how it works.
- Reviewing career options and opportunities available for you to earn Valencia credit.
- Providing information on the Valencia programs that map to your OCPS Technical College program.
- Assisting you in applying and enrolling at Valencia - ensuring a smooth and seamless transition.

Tech Express Advisor:
Gwen Murrell
gmurrell1@valenciacollege.edu
• Located in the Career Center
at the Kissimmee campus
• oTECH Days are:
Tuesdays and Thursdays
8:00am-3:00pm

Review of Information



Please check out our website for in-depth information

<https://www.osceolaschools.net/otech>

Facebook: weareoTECH

Twitter: @weareoTECH



If you have questions after today, please email:

Patricia.collins@osceolaschools.net

Jennifer.Aviles2@osceolaschools.net



FLORIDA DEPARTMENT OF
EDUCATION
— fldoe.org

Q&A



FLORIDA DEPARTMENT OF
EDUCATION
fldoe.org

Northwest Florida State College

NORTHWEST FLORIDA STATE COLLEGE

Panel Presentation for Career Dual Enrollment

February 1, 2022



Collegiate High School

- Collegiate High School (CHS) Mission
- Benefits of Attending CHS
- Atmosphere and Culture
- Post-Graduation Opportunities

Starting New Career Dual Enrollment Programs

Welding

- Assess Local Need
- Align Clock Hour Programs to Existing Programs
- Use Creative Scheduling
- Embed Industry Certifications

Starting New Career Dual Enrollment Programs

Aviation Airframe Mechanics

- Program Alignment With High School
- Scheduling
- Next steps

Recruitment and Marketing Strategies

Dual Enrollment Preflight

- Half Day event on main campus

Propel

- Saturday event at the ACE Facility

Futures Forward

- CTE immersion Summer Camp

Panelists & Helpful Links:

Anthony Boyer

Principal, Collegiate
High School

boyera@nwfsc.edu

NWFSC Home Page

nwfsc.edu

Collegiate High School

<https://chs.nwfsc.edu/>

Dr. Michael Erny

Dean, Career Education

ernym@nwfsc.edu

Aviation Program

<https://www.nwfsc.edu/academics/degrees-offered/aviation/>

Rhonda Springfield

Director, K-12

Partnerships

springfr@nwfsc.edu

Dual Enrollment

<https://www.nwfsc.edu/academics/dual-enrollment/>

Kids on Campus

<https://www.nwfsc.edu/academics/non-degree-programs/koc/>



FLORIDA DEPARTMENT OF
EDUCATION
fldoe.org

Q&A



FLORIDA DEPARTMENT OF
EDUCATION
fldoe.org

Lorenzo Walker Technical College

Dual Enrollment
Yolanda Flores
February 1, 2022



Equipping Southwest Florida's Workforce since 1974

Career Dual Enrollment Expansion Approach

- Strategic Planning
- Business Partnerships
- Facilities
- Funding
- Staffing



Career Dual Enrollment Best Practices

- Public Relations and Marketing
- School Culture
- Staff Selection
- Scheduling
- High Expectations – College and Career Readiness
- Work Based Experiences
- Student Support Systems



Career Dual Enrollment Challenges

- CTE misconceptions
- High school graduation requirements
- Funding
- Facilities



Career Dual Enrollment Articulation

- Articulation agreement
- Marketing and recruiting
- Career pathways



Career Dual Enrollment Marketing Strategies

- 5th grade tours
- 8th grade visits
- Community tours
- Spring Career Exploration Camp
- Healthcare Careers Summer Camp
- Transportation Careers Summer Camp
- Partnerships with nonprofit organizations
- Future Ready Collier
- Future Makers



Yolanda Flores, Administrative Director

Lorenzo Walker Technical College

3702 Estey Ave.

Naples, FL 34104

(239) 377-0904

floresyo@collierschools.com



FLORIDA DEPARTMENT OF
EDUCATION
— fldoe.org

Q&A

Get-There Faster Career Dual Enrollment Pathways Expansion Grant Resources

- Application Due Date: **Tuesday, March 1, 2022**
- Application Website:
 - <https://www.fldoe.org/academics/career-adult-edu/funding-opportunities/careerdualenrollment.shtml>

FDOE Contacts

Elizabeth Moya

Assistant Vice
Chancellor, Articulation and
Career Education
Policy

Elizabeth.Moya@fldoe.org

Alexandria Armstrong

Director, Articulation & Career
Education

Alexandria.Armstrong@fldoe.org

Trinity Henderson

Manager, Course Code
Directory

Trinity.Henderson@fldoe.org

Yolanda Singletary

Educational Policy Analyst

Yolanda.Singletary@fldoe.org