



Statistical Brief

Bureau of Education Information & Accountability Services

Series 2004-27B

May 2004

Florida's Nonpublic Schools 2003-04

A nonpublic school is defined in Section 1002.01(2), Florida Statutes, as “***an individual, association, copartnership, or corporation or a department, division, or section of such organizations, that designates itself as an educational center that includes kindergarten or a higher grade...below college level....***” Throughout this report and relevant legislation, the terms *nonpublic* and *private* are used interchangeably. Private elementary and secondary schools in Florida are not licensed, approved, accredited or regulated by the state, but they are required to make their existence known to the Department of Education and respond to an annual survey designed to elicit information about them for public inspection. While survey respondents do identify the school and its program by type for directory information purposes, in this report no differentiations are made between religious, nonreligious, military, nonprofit or proprietary schools. All responses to the 2003-04 school year survey are included. Of the 2,231 known nonpublic schools, 195 are prekindergarten centers; 11 are other; 41 are specific exceptionality schools; 1,128 are elementary schools reporting student enrollment in one or more of the grades K-8; 153 are secondary schools reporting student enrollment only in one or more of the grades 9-12; and 703 are K-12 schools (elementary and secondary). Enrollment is reported by the survey respondents only as grade level totals, or as multigraded/ungraded totals, not by race or gender category.

Figure 1 shows the reported nonpublic school enrollment by grade for school years 2002-03 and 2003-04.

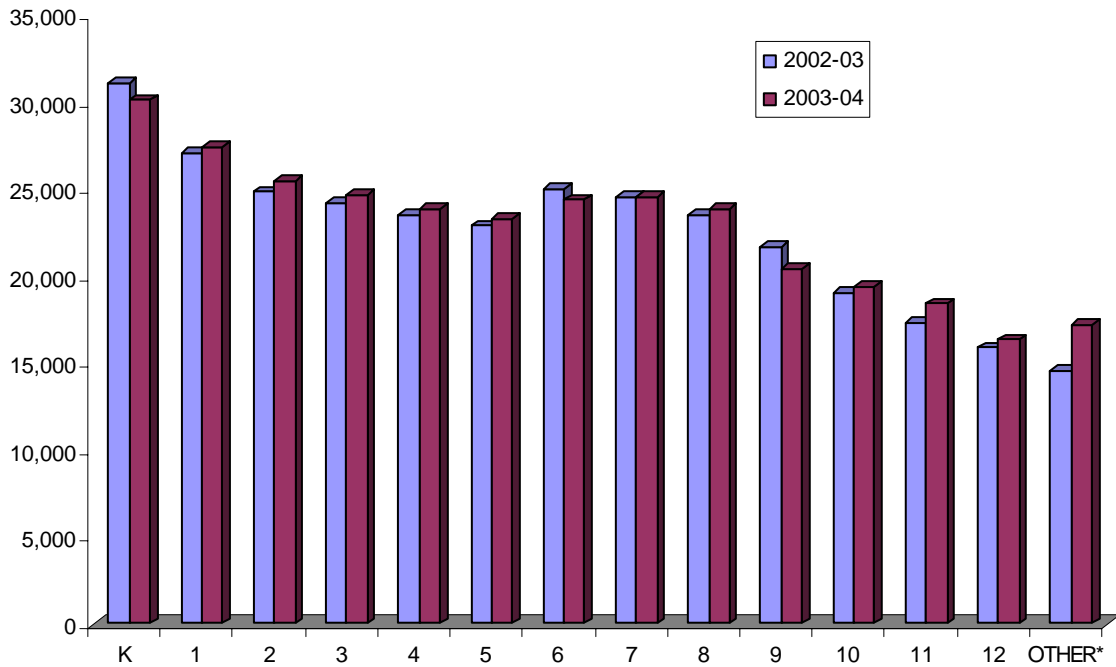
Data of as May 12, 2004

PAGE**INSIDE THIS ISSUE**

- 4 Table 1, Instructional and Administrative Personnel
- 5 Table 2, Student Enrollment by Grade
- 6 Table 3, Distribution of Students
- 7 Table 4, Postsecondary Plans of Graduates
- 8 Table 5, Ten-Year Student Distribution
- 9 Table 6, Nonpublic Schools Count

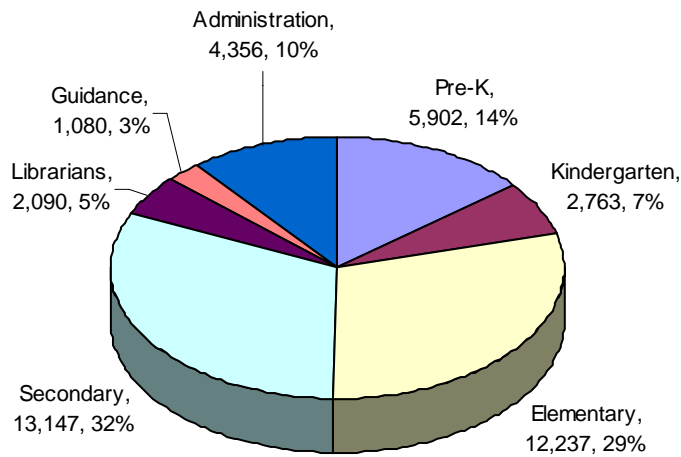
Education
Information and
Accountability
Services

Figure 1
REPORTED STUDENT ENROLLMENT
FOR NONPUBLIC SCHOOLS
2002-03 AND 2003-04
BY GRADE



*"Other" shows enrollment submitted by a school as a total number, not separated by grade.

Figure 2
NONPUBLIC SCHOOLS: REPORTED NUMBERS OF
INSTRUCTIONAL AND ADMINISTRATIVE PERSONNEL TYPES



Total Nonpublic Instructional and Administrative Personnel Types: 41,575

Data of as May 12, 2004

Figure 2 shows the reported numbers of nonpublic schools' instructional and administrative personnel types. The Nonpublic School Data Base Survey collects information on seven personnel types: prekindergarten instructors, kindergarten instructors, elementary teachers (grades 1-6), secondary teachers (grades 7-12), librarians and media specialists, guidance personnel, and administrators. Information was not collected on support personnel such as secretaries, aides and paraprofessionals, and volunteers. Statistics for personnel in the named areas reflect actual numbers of such individuals but do not indicate the full range of functions they may perform. Reporting instructions requested that full-time employees who have responsibilities in more than one area be reported in the category where they spend the majority of their time. The survey does not differentiate between full-time and part-time personnel or the percentage of full-time employment represented by any part-time individual.

Tables 1 through 6 are county-by-county displays of the data. A county is not listed in the tables if there is no nonpublic school membership reported for that county.

Table 1 is a summary of the seven types of instructional and administrative personnel in nonpublic schools.

Tables 2 through 6 provide information on students in nonpublic schools in the following formats:

- **Table 2** shows reported nonpublic school enrollment for 2003-04 by grade.
- **Table 3** shows the aggregate number and percent of student enrollment by county in both public and nonpublic schools.
- **Table 4** shows the number of 2003 nonpublic high school graduates and the number who planned to pursue a postsecondary education grouped by the types of institutions in which they intended to enroll.
- **Table 5** shows the percentage of the total school-age population in public and nonpublic schools over the ten-year period from 1994-95 through 2003-04. During this period, the percentage of students enrolled in nonpublic schools increased from 10.17 to 12.79, and the annual PK-12 enrollment total increased by 3,645 students. Prekindergarten enrollments of 61,695 reported from registered daycare centers and nonpublic schools are included.
- **Table 6** counts nonpublic schools as they are listed in the 2003-04 Directory of Nonpublic Schools. Survey respondents designate their schools as Prekindergarten, Elementary K-8, Secondary 9-12, All Grades K-12, Special Needs ESE/Other by the grade level of the majority of their students. The 195 predominantly prekindergarten sites are shown on this table because they report enrollment and are listed in the Directory of Nonpublic Schools.

Table 1
NONPUBLIC SCHOOLS:
NUMBERS OF INSTRUCTIONAL AND ADMINISTRATIVE PERSONNEL
2003-04

District	Pre-K	Kindergarten	Elementary	Secondary	Librarians	Guidance	Administration	Total
ALACHUA	102	31	132	127	11	8	66	477
BAKER	0	0	2	1	0	0	0	3
BAY	28	11	45	53	8	7	23	175
BRADFORD	2	3	6	5	0	1	4	21
BREVARD	131	74	325	322	33	37	115	1,037
BROWARD	572	217	1,118	1,294	102	120	422	3,845
CALHOUN	0	0	1	1	1	1	1	5
CHARLOTTE	25	14	49	22	2	1	19	132
CITRUS	16	9	36	44	8	5	12	130
CLAY	47	25	150	155	7	10	56	450
COLLIER	111	25	150	138	14	11	48	497
COLUMBIA	6	7	22	15	2	2	8	62
MIAMI-DADE	1,566	689	1,936	1,995	175	220	817	7,398
DESOTO	0	0	3	12	2	2	5	24
DUVAL	398	214	917	1,244	167	107	396	3,443
ESCAMBIA	91	51	241	223	19	20	69	714
FLAGLER	6	4	13	7	1	2	5	38
FRANKLIN	2	1	5	1	0	0	1	10
GADSDEN	3	2	14	24	1	2	5	51
GILCHRIST	2	1	3	13	1	2	3	25
GULF	5	1	6	3	1	1	2	19
HAMILTON	0	3	7	7	0	0	3	20
HARDEE	0	0	1	2	0	1	1	5
HENDRY	15	2	10	3	0	0	3	33
HERNANDO	33	14	50	36	4	6	17	160
HIGHLANDS	13	8	34	19	3	2	11	90
HILLSBOROUGH	347	180	803	794	69	71	305	2,569
HOLMES	0	1	2	5	0	1	3	12
INDIAN RIVER	16	11	69	66	13	2	19	196
JACKSON	4	2	10	9	2	0	7	34
JEFFERSON	2	2	8	14	1	0	4	31
LAFAYETTE	1	1	2	0	0	0	1	5
LAKE	62	25	150	171	8	9	60	485
LEE	153	72	310	350	23	24	113	1,045
LEON	132	44	220	174	14	16	77	677
LEVY	1	1	2	4	1	2	3	14
MADISON	1	2	7	20	4	3	5	42
MANATEE	46	41	201	772	309	13	73	1,455
MARION	64	38	186	166	14	18	58	544
MARTIN	29	20	94	66	8	5	21	243
MONROE	18	9	34	23	2	2	11	99
NASSAU	25	11	43	36	3	4	10	132
OKALOOSA	55	16	80	55	6	8	26	246
OKEECHOBEE	4	2	18	22	0	1	5	52
ORANGE	447	195	1,342	1,493	761	74	297	4,609
OSCEOLA	58	21	107	61	9	6	35	297
PALM BEACH	481	195	1,036	979	82	72	358	3,203
PASCO	37	27	114	106	14	8	43	349
PINELLAS	235	133	718	661	63	69	266	2,145
POLK	71	47	238	208	27	18	77	686
PUTNAM	7	8	30	40	3	6	14	108
ST. JOHNS	37	17	59	57	4	7	24	205
ST. LUCIE	40	34	174	157	8	15	35	463
SANTA ROSA	15	4	13	21	3	2	10	68
SARASOTA	63	39	245	313	19	19	77	775
SEMINOLE	153	99	370	290	26	20	124	1,082
SUMTER	3	3	4	8	0	0	5	23
SUWANNEE	6	5	17	14	0	1	6	49
TAYLOR	0	0	1	2	0	0	1	4
UNION	1	1	3	5	0	0	1	11
VOLUSIA	111	50	226	193	22	16	64	682
WAKULLA	0	1	21	23	10	0	3	58
WALTON	3	0	4	3	0	0	3	13
TOTAL	5,902	2,763	12,237	13,147	2,090	1,080	4,356	41,575

Data of as May 12, 2004

**Table 2
NONPUBLIC SCHOOLS STUDENT ENROLLMENT BY GRADE
2003-04**

DISTRICT	PK	K	1	2	3	4	5	6	7	8	9	10	11	12	Other*	Total
ALACHUA	962	320	308	271	251	269	233	204	212	190	142	125	111	96	229	3,923
BAKER	0	0	0	0	0	0	0	0	0	0	0	0	0	0	13	13
BAY	382	132	122	121	115	102	101	105	112	115	60	51	34	36	7	1,595
BRADFORD	17	12	11	6	4	3	2	5	3	1	1	3	1	0	0	69
BREVARD	1,539	742	816	721	705	672	680	707	697	767	530	571	529	450	1,737	11,863
BROWARD	6,546	3,217	2,962	2,821	2,762	2,671	2,562	2,830	3,007	2,864	3,108	2,868	2,620	2,779	804	44,421
CALHOUN	0	0	0	0	0	2	0	1	1	0	2	1	0	1	0	8
CHARLOTTE	298	163	168	160	151	138	124	111	88	77	25	28	21	17	3	1,572
CITRUS	175	113	84	85	86	85	80	66	79	57	45	41	39	26	9	1,070
CLAY	507	319	252	232	242	241	220	264	292	260	888	951	983	736	756	7,143
COLLIER	936	367	340	291	277	279	276	278	252	256	150	185	166	229	115	4,397
COLUMBIA	29	29	39	37	28	32	34	26	42	24	22	16	9	10	15	392
MIAMI-DADE	15,639	5,744	4,534	4,061	3,885	3,766	3,589	4,104	4,005	3,859	3,750	3,643	4,319	3,194	5,641	73,733
DESOTO	0	0	0	1	2	2	2	10	15	16	18	13	18	28	0	125
DUVAL	4,126	2,313	2,106	1,980	1,857	1,797	1,739	1,997	2,158	2,076	1,896	1,772	1,367	1,248	1,510	29,942
ESCAMBIA	949	786	698	597	534	527	491	511	524	512	378	333	301	284	398	7,823
FLAGLER	95	53	56	44	43	32	37	30	26	23	6	4	8	2	0	459
FRANKLIN	26	5	10	7	7	9	4	3	12	0	0	0	0	0	0	83
GADSDEN	36	31	35	38	34	40	43	39	54	60	53	49	50	37	20	619
GILCHRIST	15	6	1	3	3	4	3	3	63	43	40	27	25	12	0	248
GULF	49	11	6	14	10	6	7	8	2	9	3	1	0	0	2	128
HAMILTON	0	14	7	7	6	8	9	7	11	18	6	9	4	3	0	109
HARDEE	0	0	0	0	0	0	0	0	0	0	0	0	0	0	24	24
HENDRY	118	33	18	20	17	21	15	11	11	18	5	2	1	4	0	294
HERNANDO	345	141	152	149	129	131	107	121	102	89	56	49	29	28	6	1,634
HIGHLANDS	143	99	66	68	57	62	59	72	55	64	42	35	14	14	4	854
HILLSBOROUGH	3,625	2,074	2,003	1,827	1,752	1,634	1,695	1,699	1,712	1,574	1,140	1,229	1,001	951	760	24,676
HOLMES	3	0	3	1	7	7	4	4	9	4	14	26	24	7	0	113
INDIAN RIVER	216	128	120	121	112	122	104	142	129	140	95	88	72	81	27	1,697
JACKSON	36	18	18	13	13	9	7	15	18	8	3	2	1	3	99	263
JEFFERSON	27	12	22	28	29	24	18	24	26	25	48	19	21	20	6	349
LAFAYETTE	11	4	5	5	5	3	5	10	0	0	0	0	0	0	48	96
LAKE	631	281	264	258	229	227	240	285	283	234	176	148	118	115	407	3,896
LEE	1,603	859	707	636	582	554	590	573	573	587	451	499	442	412	89	9,157
LEON	1,246	501	448	401	396	388	389	401	382	396	259	203	194	169	111	5,884
LEVY	6	11	8	7	12	13	17	15	12	11	14	9	3	5	0	143
MADISON	20	14	18	22	19	25	20	31	50	33	52	37	11	5	11	368
MANATEE	523	334	340	296	315	307	278	344	325	359	304	298	293	283	64	4,663
MARION	671	397	402	332	371	351	341	386	405	457	417	374	369	222	16	5,511
MARTIN	353	260	227	208	202	206	193	193	187	170	32	44	36	34	144	2,489
MONROE	243	72	49	46	42	46	41	52	37	50	5	14	19	10	0	726
NASSAU	241	120	93	85	78	63	57	53	53	51	27	20	26	27	27	1,021
OKALOOSA	583	266	235	237	211	182	198	149	133	135	114	86	83	68	120	2,800
OKEECHOBEE	33	30	26	16	24	17	17	10	8	12	12	14	5	6	0	230
ORANGE	4,138	2,292	2,133	2,016	2,016	1,920	1,842	1,866	1,874	1,809	1,313	1,204	1,125	1,089	1,363	28,000
OSCEOLA	794	306	304	290	254	252	252	212	221	170	116	85	52	60	96	3,464
PALM BEACH	4,239	2,381	2,268	2,261	2,230	2,148	2,061	1,951	1,977	2,003	1,358	1,189	1,165	1,097	182	28,510
PASCO	542	303	271	242	261	218	237	203	230	205	183	116	123	81	91	3,306
PINELLAS	2,713	1,602	1,682	1,549	1,566	1,554	1,549	1,557	1,498	1,526	1,015	1,016	934	806	880	21,447
POLK	1,003	672	625	604	584	578	581	522	546	555	317	287	258	256	93	7,481
PUTNAM	164	33	49	37	44	40	41	156	58	63	69	71	43	41	38	947
ST. JOHNS	607	224	192	173	160	163	145	173	130	110	76	92	69	66	157	2,537
ST. LUCIE	423	327	279	283	259	253	260	243	245	233	347	270	266	224	54	3,966
SANTA ROSA	267	62	46	39	33	28	37	35	48	37	39	39	42	28	9	789
SARASOTA	682	445	424	420	381	413	451	446	493	485	523	487	416	317	369	6,752
SEMINOLE	1,787	868	788	768	791	757	687	635	592	559	392	346	360	282	245	9,857
SUMTER	5	1	1	2	11	5	4	6	16	6	9	5	4	4	0	79
SUWANNEE	69	41	30	29	23	25	22	19	19	22	23	17	18	9	43	409
TAYLOR	0	0	0	1	3	1	7	3	5	2	2	1	1	0	0	26
UNION	3	1	4	3	3	2	3	2	1	5	6	5	5	2	0	45
VOLUSIA	1,234	559	541	517	477	466	462	468	453	446	220	245	169	349	356	6,962
WAKULLA	5	2	3	1	3	4	4	2	3	8	1	2	2	0	9	49
WALTON	17	3	8	4	6	2	10	4	3	3	4	2	2	3	26	97
TOTAL	61,695	30,153	27,427	25,512	24,709	23,906	23,286	24,402	24,577	23,891	20,402	19,366	18,421	16,366	17,233	381,346

Data of as May 12, 2004

**Table 3
DISTRIBUTION OF STUDENTS IN PUBLIC AND NONPUBLIC SCHOOLS
2003-04**

District	Public School Membership PK-12		Nonpublic School Enrollment Pk-12	
	Number	Percent of Total	Number	Percent of Total
ALACHUA	29,493	88.26	3,923	11.74
BAKER	4,607	99.72	13	0.28
BAY	26,724	94.37	1,595	5.63
BRADFORD	3,906	98.26	69	1.74
BREVARD	73,921	86.17	11,863	13.83
BROWARD	272,928	86.00	44,421	14.00
CALHOUN	2,225	99.64	8	0.36
CHARLOTTE	18,318	92.10	1,572	7.90
CITRUS	15,520	93.55	1,070	6.45
CLAY	31,382	81.46	7,143	18.54
COLLIER	40,171	90.13	4,397	9.87
COLUMBIA	9,784	96.15	392	3.85
MIAMI-DADE	371,883	83.45	73,733	16.55
DESOTO	4,978	97.55	125	2.45
DIXIE	2,170	100.00	0	0.00
DUVAL	129,617	81.23	29,942	18.77
ESCAMBIA	44,009	84.91	7,823	15.09
FLAGLER	8,568	94.92	459	5.08
FRANKLIN	1,347	94.20	83	5.80
GADSDEN	6,960	91.83	619	8.17
GILCHRIST	2,836	91.96	248	8.04
GLADES	1,013	100.00	0	0.00
GULF	2,150	94.38	128	5.62
HAMILTON	2,057	94.97	109	5.03
HARDEE	5,223	99.54	24	0.46
HENDRY	7,659	96.30	294	3.70
HERNANDO	19,601	92.31	1,634	7.69
HIGHLANDS	11,665	93.18	854	6.82
HILLSBOROUGH	181,931	88.06	24,676	11.94
HOLMES	3,383	96.77	113	3.23
INDIAN RIVER	16,641	90.75	1,697	9.25
JACKSON	7,200	96.48	263	3.52
JEFFERSON	1,491	81.03	349	18.97
LAFAYETTE	1,037	91.53	96	8.47
LAKE	34,003	89.72	3,896	10.28
LEE	66,492	87.90	9,157	12.10
LEON	32,234	84.56	5,884	15.44
LEVY	6,209	97.75	143	2.25
LIBERTY	1,405	100.00	0	0.00
MADISON	3,245	89.81	368	10.19
MANATEE	40,274	89.62	4,663	10.38
MARION	40,398	88.00	5,511	12.00
MARTIN	17,806	87.74	2,489	12.26
MONROE	9,134	92.64	726	7.36
NASSAU	10,548	91.17	1,021	8.83
OKALOOSA	31,045	91.73	2,800	8.27
OKEECHOBEE	7,281	96.94	230	3.06
ORANGE	165,939	85.56	28,000	14.44
OSCEOLA	43,958	92.70	3,464	7.30
PALM BEACH	170,349	85.66	28,510	14.34
PASCO	57,570	94.57	3,306	5.43
PINELLAS	114,545	84.23	21,447	15.77
POLK	84,136	91.83	7,481	8.17
PUTNAM	12,246	92.82	947	7.18
ST. JOHNS	23,179	90.13	2,537	9.87
ST. LUCIE	32,801	89.21	3,966	10.79
SANTA ROSA	24,443	96.87	789	3.13
SARASOTA	39,544	85.42	6,752	14.58
SEMINOLE	64,909	86.82	9,857	13.18
SUMTER	6,859	98.86	79	1.14
SUWANNEE	5,859	93.47	409	6.53
TAYLOR	3,572	99.28	26	0.72
UNION	2,172	97.97	45	2.03
VOLUSIA	64,074	90.20	6,962	9.80
WAKULLA	4,734	98.98	49	1.02
WALTON	6,525	98.54	97	1.46
WASHINGTON	3,429	100.00	0	0.00
DEAF/BLIND	720	100.00	0	0.00
DOZIER/OKEEC	428	100.00	0	0.00
FL VIRTUAL	1,712	100.00	0	0.00
FAU LAB SCH	483	100.00	0	0.00
FSU LAB SCH	2,217	100.00	0	0.00
FAMU LAB SCH	467	100.00	0	0.00
UF LAB SCH	1,179	100.00	0	0.00
TOTAL	2,600,521	87.21	381,346	12.79

Data of as May 12, 2004

**Table 4
POSTSECONDARY PLANS INDICATED BY
GRADUATES FROM NONPUBLIC HIGH SCHOOLS
SPRING 2003**

DISTRICT	TOTAL GRADUATES	FLORIDA COMMUNITY COLLEGES		FLORIDA UNIVERSITIES/COLLEGES		OUT-OF-STATE COLLEGES AND UNIVERSITY	TECHNICAL, TRADE AND OTHER SCHOOLS	
		PUBLIC	PRIVATE	PUBLIC	PRIVATE		IN-STATE	OUT-OF-STATE
ALACHUA	115	38	0	28	7	33	0	19
BAKER	0	0	0	0	0	0	0	0
BAY	62	31	0	4	0	7	1	0
BRADFORD	1	1	0	0	0	0	0	0
BREVARD	550	213	17	134	77	91	4	49
BROWARD	2,441	391	13	1,066	225	589	12	3
CALHOUN	0	0	0	0	0	0	0	0
CHARLOTTE	9	3	0	5	1	2	1	0
CITRUS	19	2	0	4	6	3	1	1
CLAY	529	16	3	29	8	55	0	4
COLLIER	208	33	0	47	43	46	6	0
COLUMBIA	17	5	0	0	0	1	0	0
MIAMI-DADE	4,377	866	8	1,135	335	1,517	35	125
DESOTO	15	0	0	0	2	7	0	0
DUVAL	1,629	354	8	410	94	246	2	3
ESCAMBIA	308	86	0	82	45	73	2	1
FLAGLER	5	4	0	0	1	0	0	0
FRANKLIN	0	0	0	0	0	0	0	0
GADSDEN	41	26	0	8	1	2	0	0
GILCHRIST	13	40	0	3	6	3	0	2
GULF	0	0	0	0	0	0	0	0
HAMILTON	5	2	0	0	0	0	0	0
HARDEE	0	0	0	0	0	0	0	0
HENDRY	0	0	0	0	0	0	0	0
HERNANDO	30	11	4	5	6	1	2	1
HIGHLANDS	13	4	0	0	3	4	0	0
HILLSBOROUGH	997	142	3	375	110	241	9	7
HOLMES	5	0	1	0	0	0	0	0
INDIAN RIVER	84	2	0	17	6	46	0	0
JACKSON	3	1	0	1	1	0	0	0
JEFFERSON	18	6	0	11	0	0	0	0
LAFAYETTE	0	0	0	0	0	0	0	0
LAKE	118	43	0	19	9	34	0	3
LEE	418	90	1	121	64	78	2	0
LEON	167	29	1	60	1	47	1	0
LEVY	4	0	0	0	0	0	0	0
MADISON	0	0	0	0	0	0	0	0
MANATEE	267	39	2	30	31	154	3	0
MARION	199	63	4	13	5	6	1	1
MARTIN	30	12	0	0	9	1	0	0
MONROE	12	2	0	3	4	3	0	0
NASSAU	36	11	2	1	1	6	3	0
OKALOOSA	56	14	0	7	8	16	4	1
OKEECHOBEE	2	1	0	0	0	0	0	0
ORANGE	1,065	252	1	303	99	249	11	1
OSCEOLA	79	44	1	3	1	7	1	0
PALM BEACH	1,023	242	12	266	121	323	7	1
PASCO	82	14	1	13	10	20	0	0
PINELLAS	760	192	3	315	73	127	10	2
POLK	247	41	0	47	39	66	7	0
PUTNAM	38	14	1	0	2	3	2	0
ST. JOHNS	96	33	2	23	21	8	6	3
ST. LUCIE	232	114	1	37	22	18	1	4
SANTA ROSA	29	5	4	2	5	3	0	0
SARASOTA	352	52	8	97	28	93	4	0
SEMINOLE	325	60	33	61	62	89	0	0
SUMTER	6	2	0	0	0	0	0	0
SUWANNEE	14	7	0	0	2	2	1	1
TAYLOR	1	0	0	0	0	0	1	0
UNION	0	0	0	0	0	0	0	0
VOLUSIA	226	91	1	44	36	39	3	0
WAKULLA	0	0	0	0	0	0	0	0
WALTON	5	0	1	0	2	1	0	0
TOTAL	17,383	3,744	136	4,829	1,632	4,360	143	169

Data of as May 12, 2004

Table 5
DISTRIBUTION OF STUDENTS OVER A TEN-YEAR PERIOD

Year	<i>Total Reported (Nonpublic and Public) Enrollment</i>	<i>Public School PK-12 Enrollment</i>		<i>Nonpublic School PK-12 Enrollment</i>	
		Number	Percent	Number	Percent
1994-95	2,298,752	2,064,884	89.83	233,868	10.17
1995-96	2,420,462	2,175,233	89.87	245,229	10.13
1996-97	2,446,044	2,188,239	89.47	257,805	10.54
1997-98	2,563,647	2,293,093	89.45	270,554	10.55
1998-99	2,610,392	2,335,681	89.48	274,711	10.52
1999-00	2,670,108	2,381,860	89.20	288,248	10.80
2000-01	2,784,625	2,435,889	87.47	348,736	12.52
2001-02	2,856,925	2,502,384	87.59	354,541	12.41
2002-03	2,919,515	2,541,814	87.06	377,701	12.94
2003-04	2,981,867	2,600,521	87.21	381,46	12.79

**Table 6
NONPUBLIC SCHOOLS COUNT**

DISTRICT	PRE-K	K-12	K-8	9-12	ESE	OTHER	TOTAL
ALACHUA	3	12	16	3	0	0	34
BAKER	0	0	0	1	0	0	1
BAY	0	5	5	0	0	0	10
BRADFORD	0	1	2	1	0	0	4
BREVARD	5	27	35	6	1	0	74
BROWARD	18	43	96	11	6	1	175
CALHOUN	0	1	0	0	0	0	1
CHARLOTTE	0	5	8	0	0	0	13
CITRUS	1	4	4	1	0	0	10
CLAY	2	20	6	3	0	0	31
COLLIER	1	5	16	1	0	0	23
COLUMBIA	1	4	2	0	0	0	7
MIAMI-DADE	81	47	234	30	7	0	399
DESOTO	0	4	0	0	0	0	4
DUVAL	8	60	82	9	6	1	166
ESCAMBIA	0	13	20	1	0	0	34
FLAGLER	1	1	2	0	0	0	4
FRANKLIN	0	0	1	0	0	0	1
GADSDEN	0	2	0	0	1	0	3
GILCHRIST	0	1	1	0	0	0	2
GULF	0	0	0	0	0	1	1
HAMILTON	0	2	0	0	0	0	2
HARDEE	0	0	1	0	0	0	1
HENDRY	0	1	1	0	0	0	2
HERNANDO	1	4	3	2	0	2	12
HIGHLANDS	0	5	4	0	1	0	10
HILLSBOROUGH	1	51	80	10	3	1	146
HOLMES	0	2	0	0	0	0	2
INDIAN RIVER	0	4	8	1	0	0	13
JACKSON	0	4	1	0	0	0	5
JEFFERSON	0	2	0	0	0	0	2
LAFAYETTE	0	0	1	0	0	0	1
LAKE	2	19	15	6	0	0	42
LEE	5	22	26	5	1	0	59
LEON	3	8	21	2	1	0	35
LEVY	0	2	0	0	0	0	2
MADISON	0	1	1	0	0	1	3
MANATEE	0	20	15	1	1	0	37
MARION	2	19	17	1	0	0	39
MARTIN	0	3	8	0	0	0	11
MONROE	0	1	6	0	0	0	7
NASSAU	1	5	5	0	0	0	11
OKALOOSA	1	5	9	0	1	0	16
OKEECHOBEE	0	3	0	0	0	0	3
ORANGE	10	51	86	5	1	1	154
OSCEOLA	4	12	10	1	0	1	28
PALM BEACH	18	43	62	11	1	0	135
PASCO	2	15	11	3	1	0	32
PINELLAS	9	36	72	13	2	0	132
POLK	0	12	29	1	2	1	45
PUTNAM	1	8	1	2	1	0	13
ST. JOHNS	2	4	10	4	0	0	20
ST. LUCIE	1	14	11	2	1	0	29
SANTA ROSA	1	4	0	1	0	0	6
SARASOTA	2	16	16	6	1	1	42
SEMINOLE	6	18	39	3	1	0	67
SUMTER	0	3	0	0	0	0	3
SUWANNEE	0	2	1	1	0	0	4
TAYLOR	0	1	0	0	0	0	1
UNION	0	1	0	0	0	0	1
VOLUSIA	2	21	27	4	1	0	55
WAKULLA	0	2	0	0	0	0	2
WALTON	0	2	1	1	0	0	4
TOTAL	195	703	1128	153	41	11	2,231

Data of as May 12, 2004

**SUMMARY OF NONPUBLIC SCHOOL
SELECTED CHARACTERISTICS
SCHOOL YEAR 2003-04**

Total number of students (PK-12)	381,346
Total number of schools (PK-12)	2,231
Total instructional/ administrative personnel in nonpublic schools (PK-12)	41,575

Percentage of state school age population (PK-12) in nonpublic schools: 12.79%

Counties with at least twelve percent or more of school-age students enrolled in nonpublic schools:

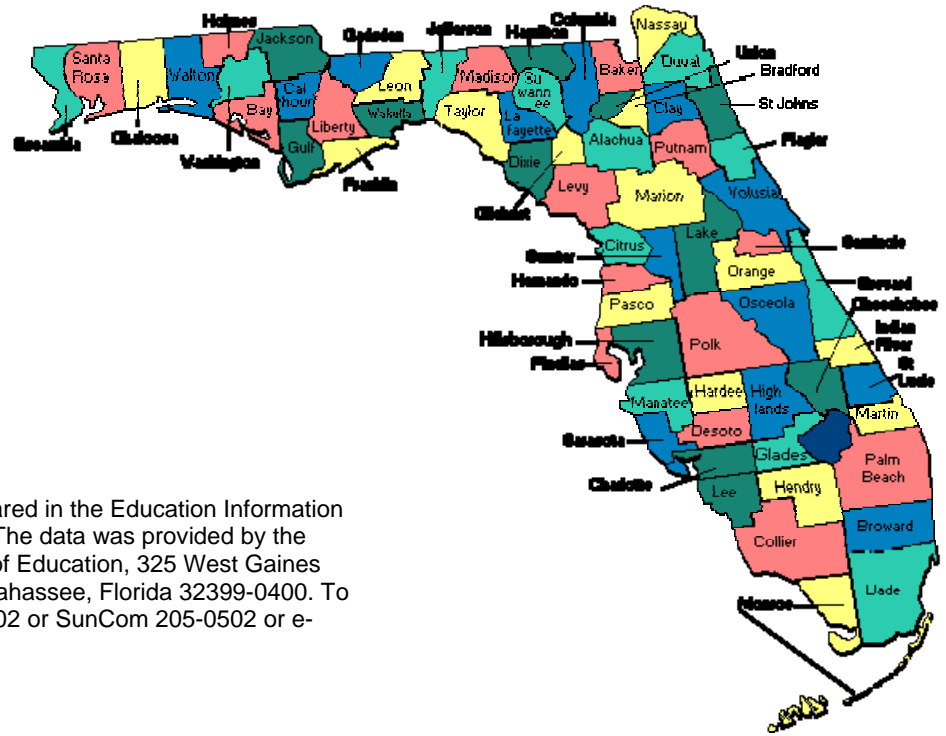
Counties	Percent
Jefferson	18.97
Duval	18.77
Clay	18.54
Miami-Dade	16.55
Pinellas	15.77
Leon	15.44
Escambia	15.09
Sarasota	14.58
Orange	14.44
Palm Beach	14.34
Broward	14.00
Brevard	13.83
Seminole	13.18
Martin	12.26
Lee	12.10
Marion	12.00

Counties with no reported nonpublic schools (PK-12):

Dixie Glades Liberty

This page intentionally left blank.

FLORIDA SCHOOL DISTRICTS



This report was designed and prepared in the Education Information and Accountability Services office. The data was provided by the Choice Office, Florida Department of Education, 325 West Gaines Street, 522 Turlington Building, Tallahassee, Florida 32399-0400. To contact the Office call (850) 245-0502 or SunCom 205-0502 or e-mail askeias@fldoe.org.

JIM HORNE, Commissioner
Florida Department of Education
Choice Office
325 W. Gaines Street, 522 Turlington Building
Tallahassee FL 32399-0400

ADDRESS CORRECTION REQUESTED