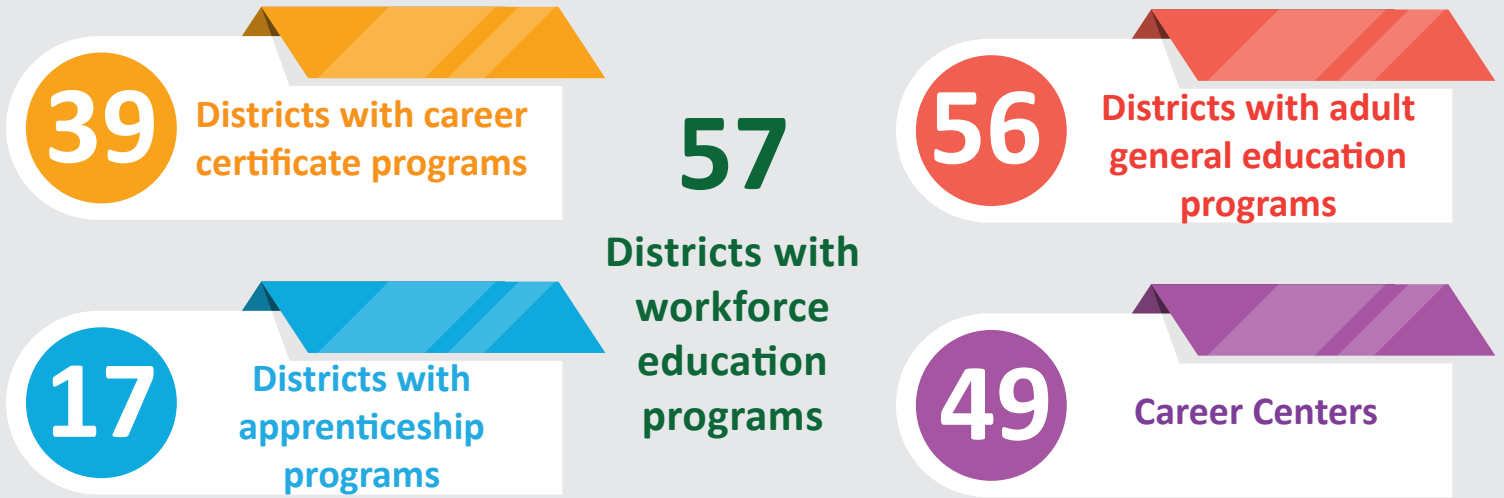
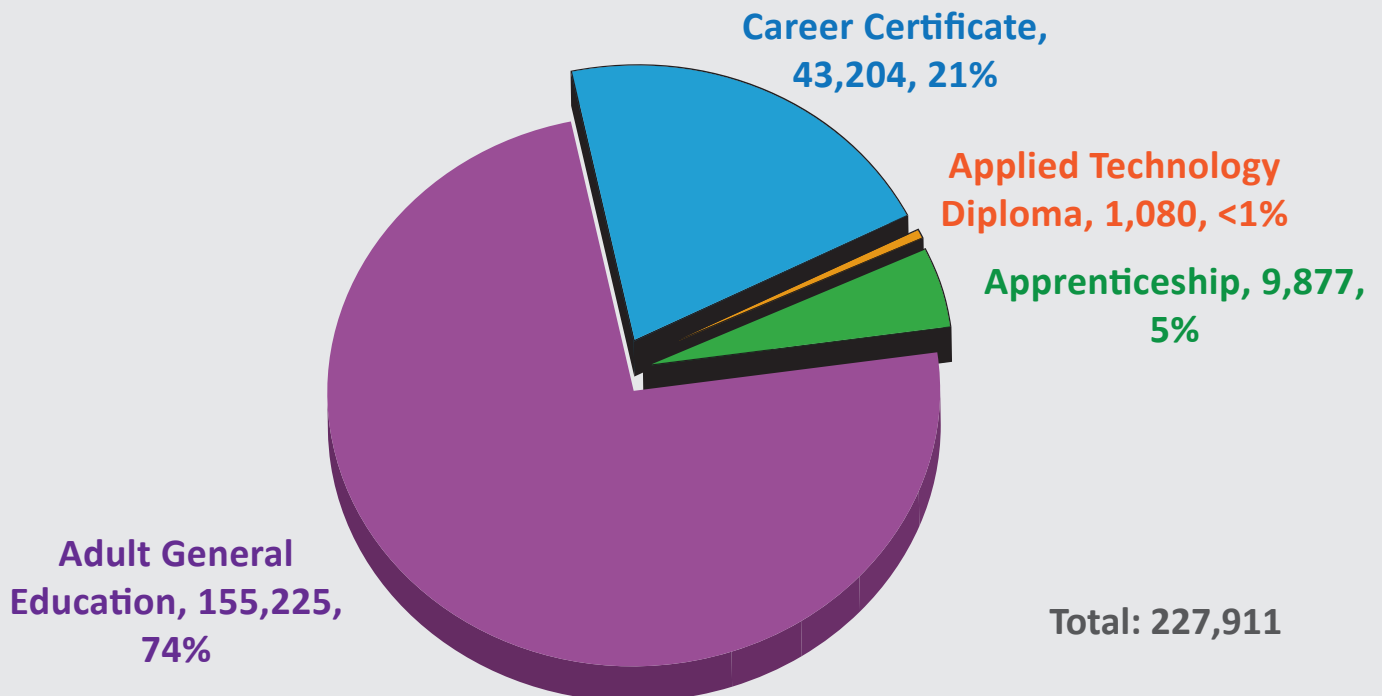


# District Career and Adult Education Summary, 2017-18

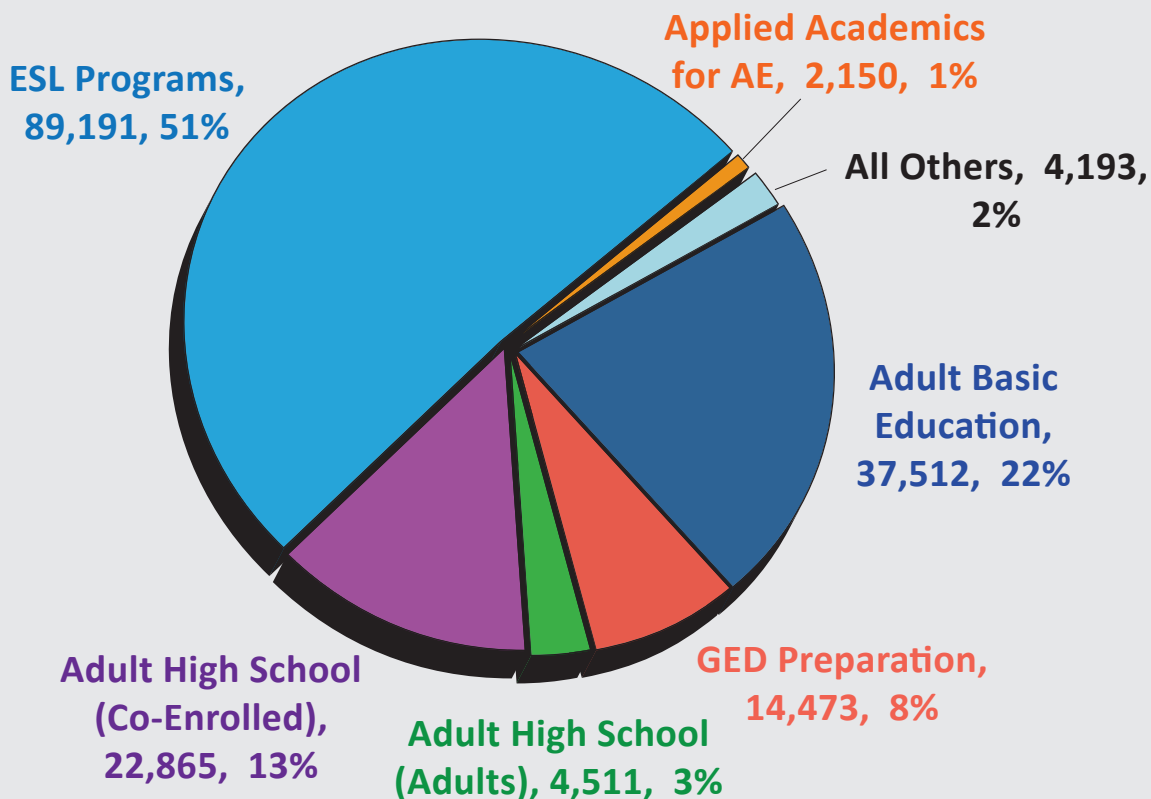
## DISTRIBUTION OF PROGRAMS



## STATEWIDE DISTRICT WORKFORCE EDUCATION ENROLLMENT

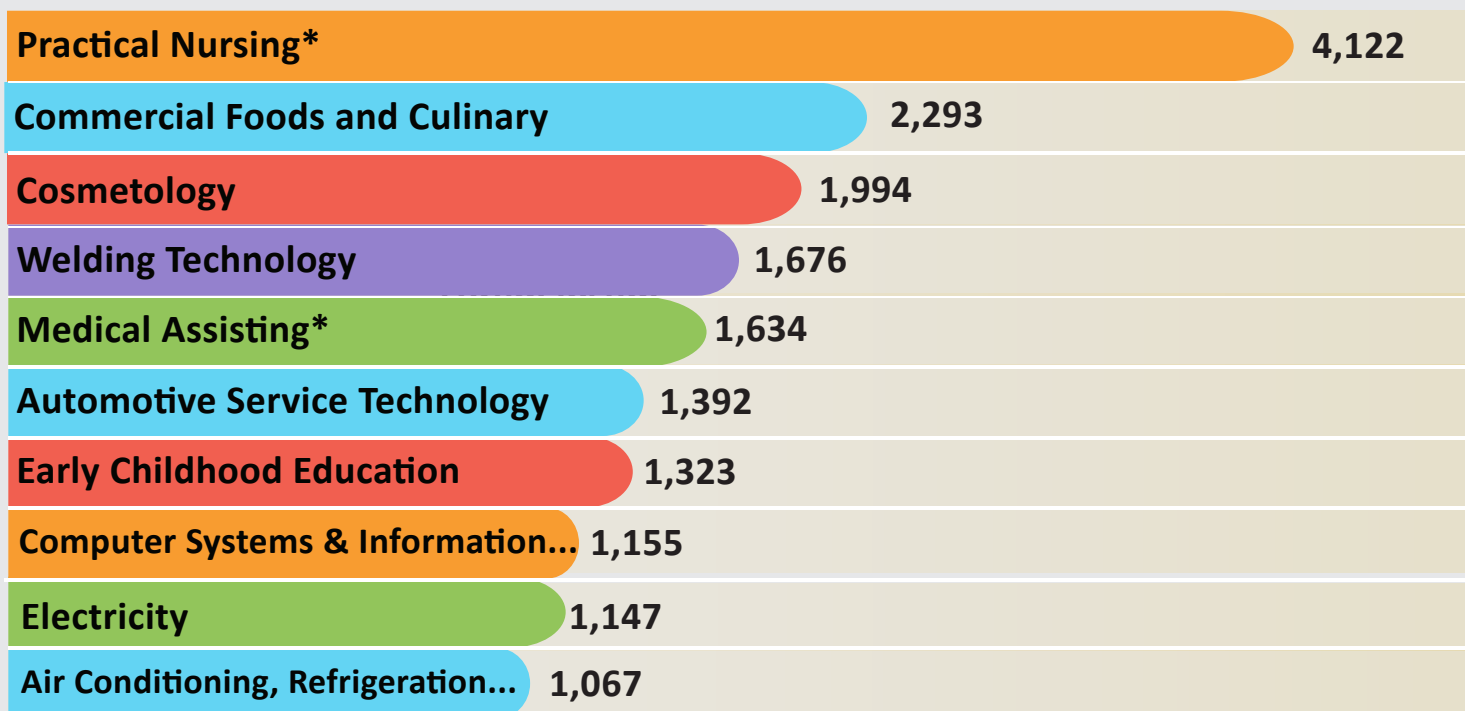


## DISTRICT ADULT GENERAL EDUCATION ENROLLMENT BY PROGRAM<sup>1</sup>



Source: FLDOE data.

## TOP TEN DISTRICT POSTSECONDARY CAREER AND TECHNICAL EDUCATION PROGRAM ENROLLMENTS



\*Includes students reported in both the old and new medical assisting program and old and new practical nursing program.

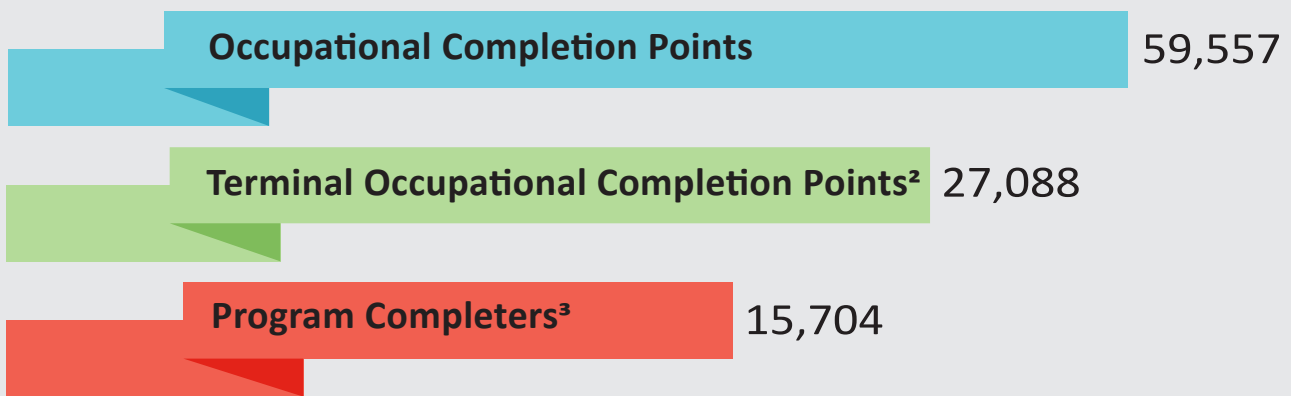
Source: FLDOE data.

## GENDER AND RACE/ETHNICITY DISTRIBUTION BY DISTRICT WORKFORCE EDUCATION PROGRAM AREA

District Workforce Education Program Area	Gender		Race/Ethnicity						
	Female	Male	African-American	American Indian	Asian	Hispanic	Multi-racial	Pacific Islander	White
Adult General Education	44.7%	55.3%	25.9%	<1.0%	2.1%	51.4%	1.2%	<1.0%	18.8%
Career Certificate & Applied Technology Diploma	46.5%	53.5%	26.4%	<1.0%	1.9%	31.3%	2.0%	<1.0%	37.8%
Apprenticeship	11.1%	88.9%	21.4%	<1.0%	1.1%	21.6%	1.2%	<1.0%	53.9%

Source: FLDOE data.

## DISTRICT POSTSECONDARY CAREER AND TECHNICAL EDUCATION COMPLETIONS



Source: FLDOE data.

## ADULT GENERAL EDUCATION LEARNING GAINS AND DIPLOMAS

Adult General Education Program Area	Learning Gains (Literacy Completion Points)
Basic Education	18,227
Adult High School (Adult)	8,311
General Educational Development (GED)	10,582
English as a Second Language (ESOL)	32,599
<b>Total</b>	<b>69,719</b>

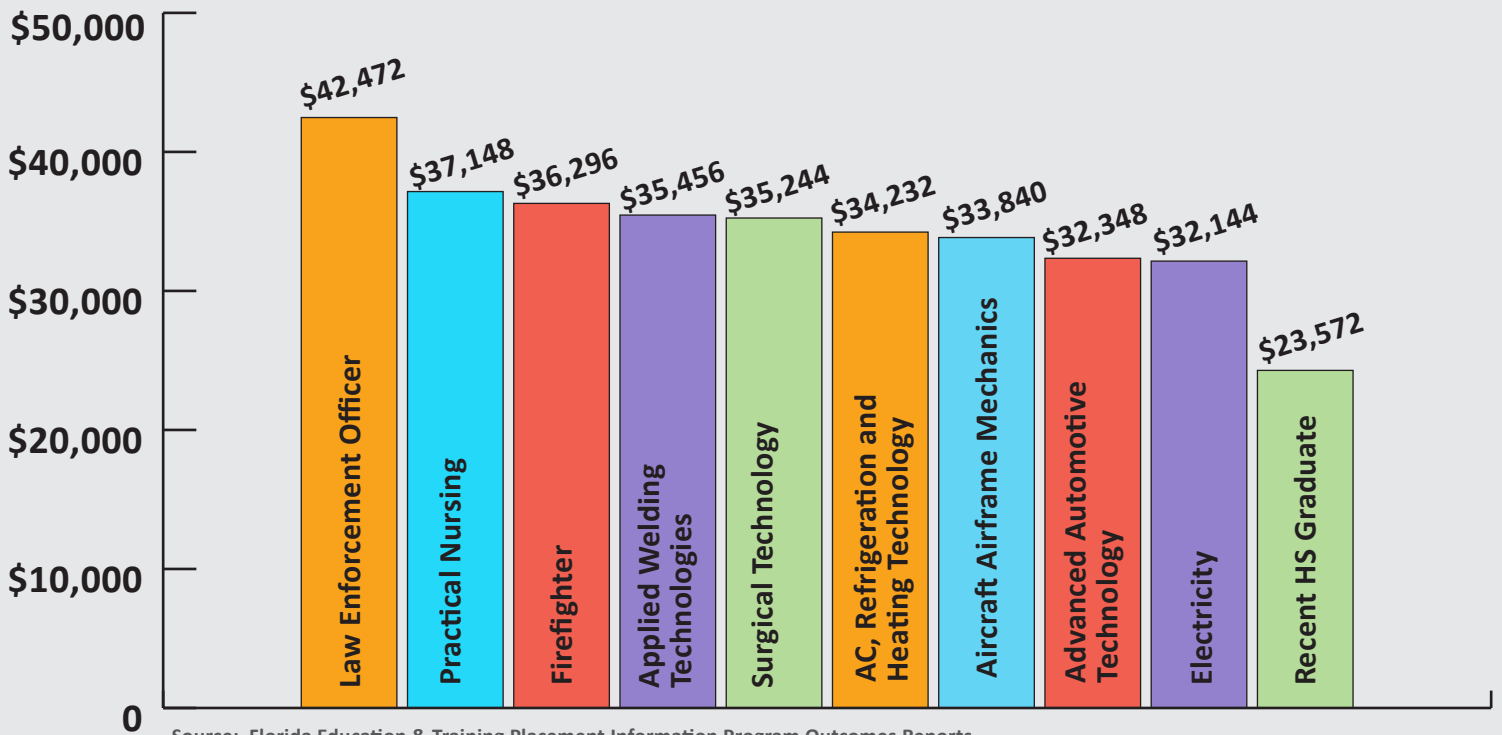
Source: FLDOE data.

## EMPLOYMENT OUTCOMES

Estimated initial fulltime earnings of a 2016-17 district certificate terminal OCP earners was **\$35,604.**

**69%** of district certificate completers in 2016-17 were employed in fall 2017.

### FALL 2017 AVERAGE INITIAL ANNUAL EARNINGS OF DISTRICT CAREER CERTIFICATE COMPLETERS IN SELECT PROGRAMS LINKED TO OCCUPATIONS ON THE STATEWIDE DEMAND OCCUPATIONS LIST



Source: Florida Education & Training Placement Information Program Outcomes Reports

<sup>1</sup>Students may have been enrolled in more than one program. Because of the duplication, the total enrollment in this chart is larger than the adult general education enrollment in the previous chart.

<sup>2</sup>Terminal Occupational Completion Points are exit points in a program from which students may exit with skills sufficient to prepare them for a specific occupation.

<sup>3</sup>Program completers are students who have completed all of the Occupational Completion Points in a certificate program and met applicable basic skills requirements.