

FLORIDA DISTRICT

CAREER, TECHNICAL AND ADULT EDUCATION

2021-2022 SUMMARY

DISTRIBUTION OF PROGRAMS

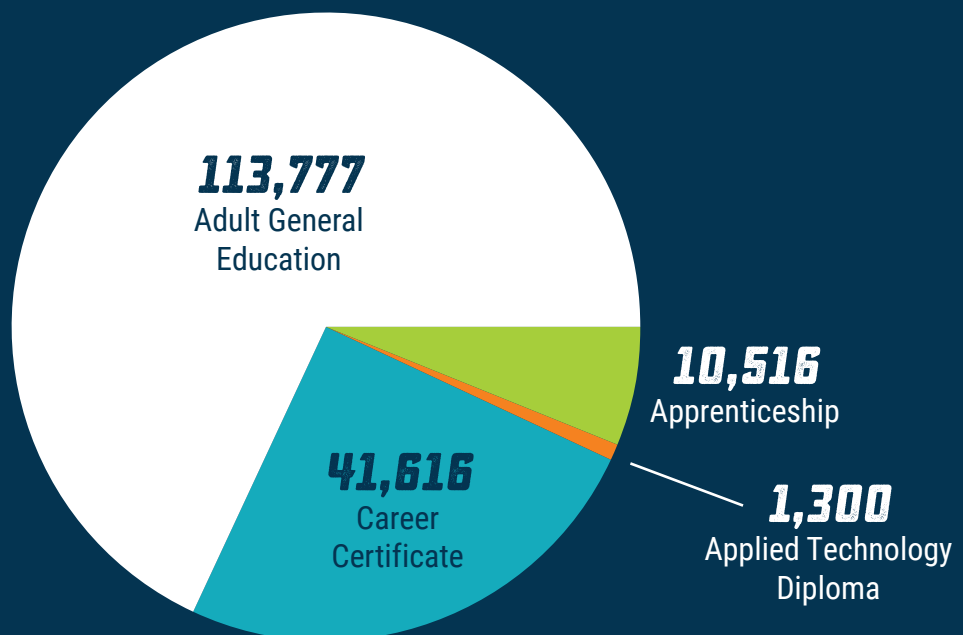
55

Districts with
Career, Technical and
Adult Education
programs



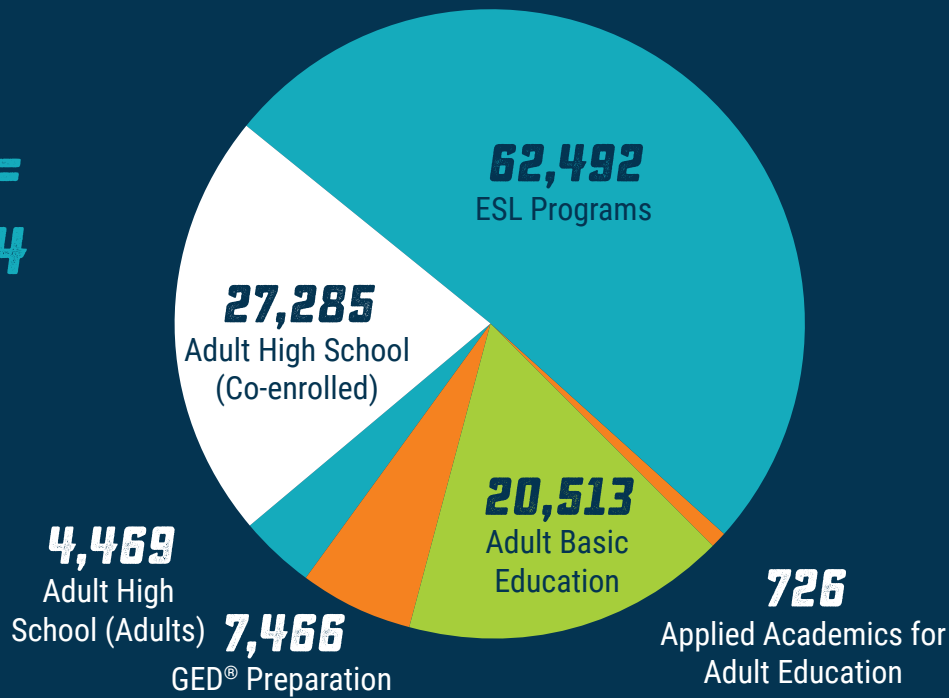
STATEWIDE DISTRICT CAREER, TECHNICAL AND ADULT EDUCATION HEADCOUNT

**TOTAL =
167,209**



DISTRICT ADULT GENERAL EDUCATION ENROLLMENT BY PROGRAM¹

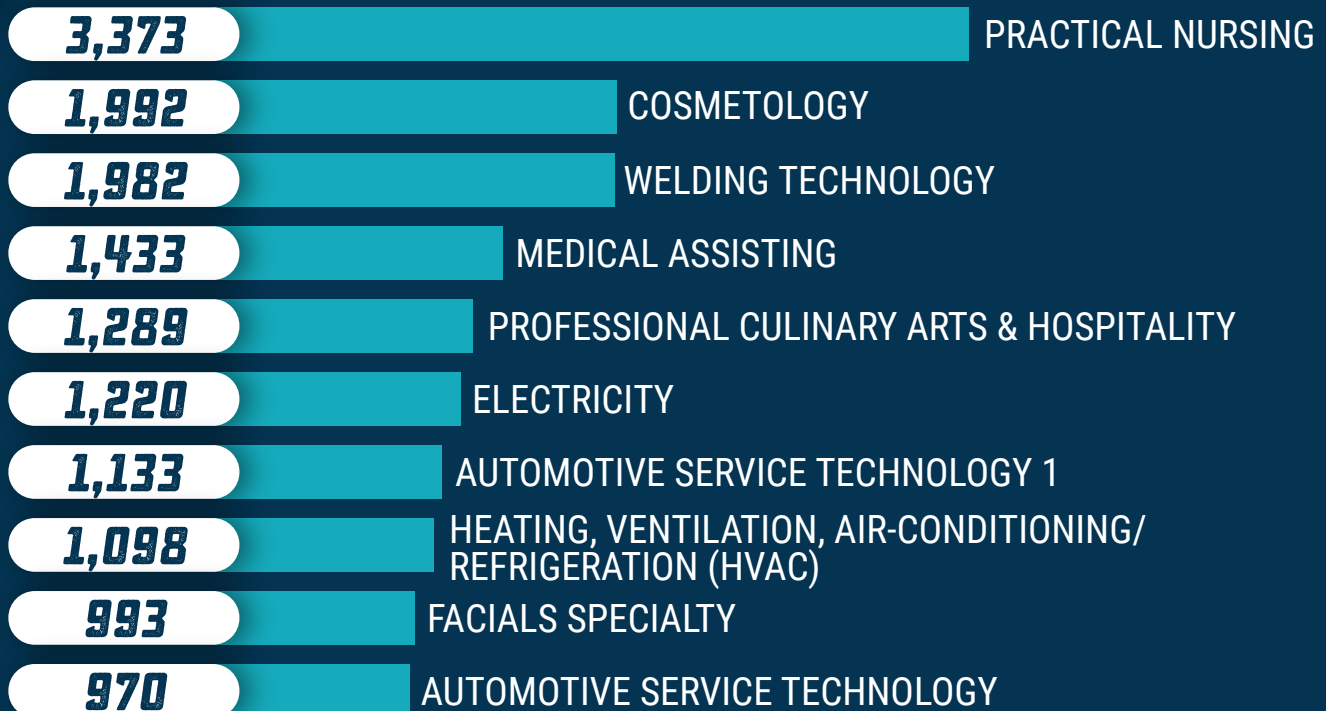
**TOTAL =
122,984**



Source: FLDOE data

¹Students may have been enrolled in more than one program. Because of the duplication, the total enrollment in this chart is larger than the adult general education enrollment in the previous chart.

TOP TEN DISTRICT POSTSECONDARY CAREER AND TECHNICAL EDUCATION PROGRAM ENROLLMENTS



Source: FLDOE data

SEX AND RACE/ETHNICITY DISTRIBUTION BY DISTRICT CAREER, TECHNICAL AND ADULT EDUCATION PROGRAM AREA

DISTRICT WORKFORCE EDUCATION PROGRAM AREA	SEX		RACE/ETHNICITY						
	FEMALE	MALE	AFRICAN AMERICAN	AMERICAN INDIAN	ASIAN	HISPANIC	MULTI-RACIAL	PACIFIC ISLANDER	WHITE
ADULT GENERAL EDUCATION	55.6%	44.4%	23.4%	<1%	1.5%	56.9%	1.4%	<1%	16.4%
CAREER CERTIFICATE & APPLIED TECHNOLOGY DIPLOMA	45.5%	54.5%	27.3%	<1%	2.1%	32.3%	2.5%	<1%	35.3%
APPRENTICESHIP	8.1%	91.9%	18.4%	<1%	<1%	23.5%	1.5%	<1%	55.0%

Source: FLDOE data

DISTRICT POSTSECONDARY CAREER AND TECHNICAL EDUCATION COMPLETIONS



Source: FLDOE data

²Terminal Occupational Completion Points are exit points in a program from which students may exit with skills sufficient to prepare them for a specific occupation.

³Program completers are students who have completed all of the Occupational Completion Points in a certificate program and met applicable basic skills requirements.

ADULT GENERAL EDUCATION LEARNING GAINS AND DIPLOMAS

ADULT GENERAL EDUCATION PROGRAM AREA	LEARNING GAINS (LITERACY COMPLETION POINTS)
BASIC EDUCATION	5,925
ADULT HIGH SCHOOL (ADULT)	8,388
HIGH SCHOOL EQUIVALENCY DIPLOMA – GED®	5,729
ENGLISH AS A SECOND LANGUAGE (ESOL)	31,826
TOTAL	51,868

Source: FLDOE data

EMPLOYMENT OUTCOMES

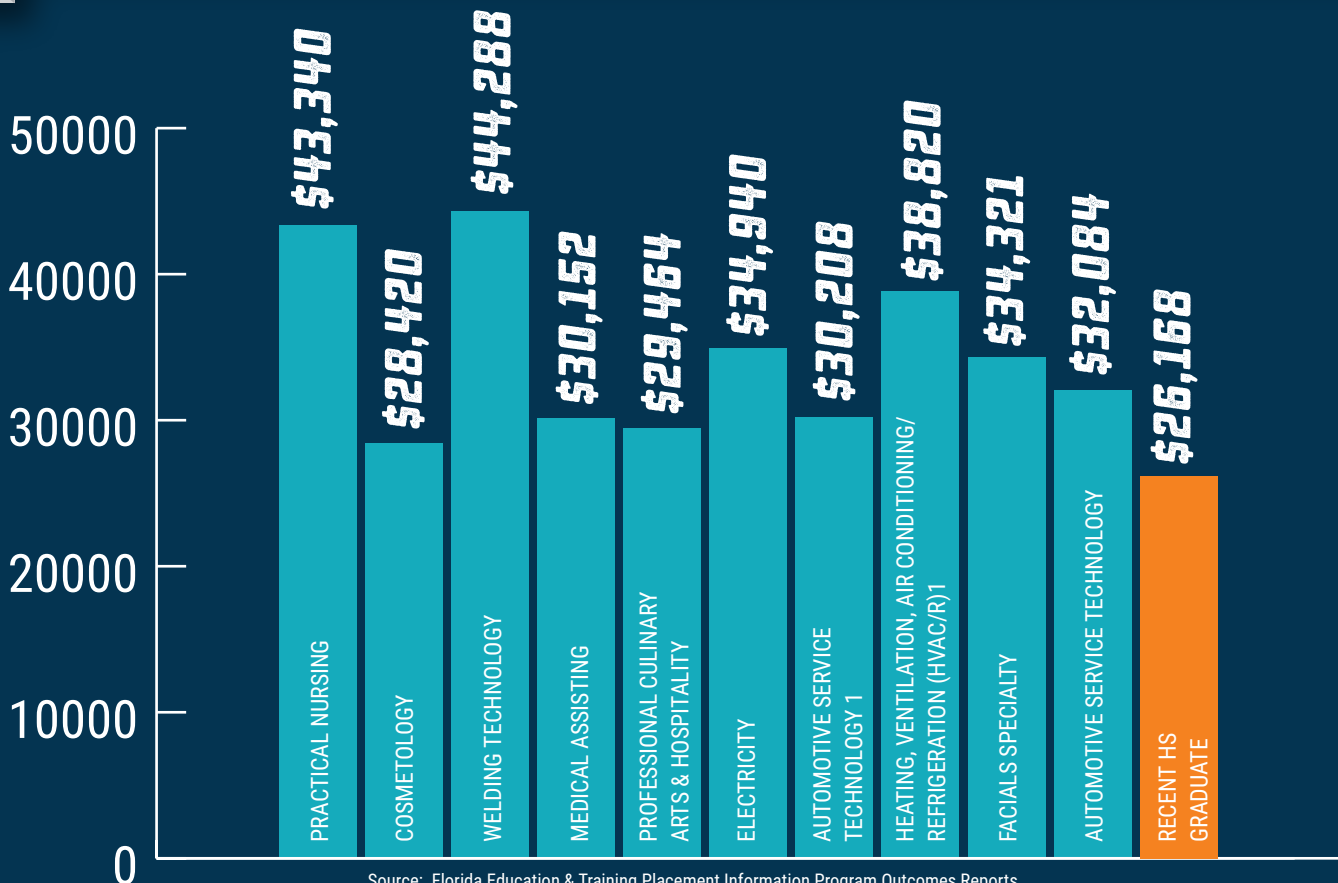
\$40,536

Estimated initial fulltime annual earnings of a 2019-20 district certificate terminal OCP earner.

70%

of district certificate completers in 2019-20 were employed in fall 2020.

FALL 2020 AVERAGE INITIAL EARNINGS OF DISTRICT CAREER CERTIFICATE EARNERS IN SELECT OCCUPATIONS WITH STATEWIDE DEMAND



Source: Florida Education & Training Placement Information Program Outcomes Reports