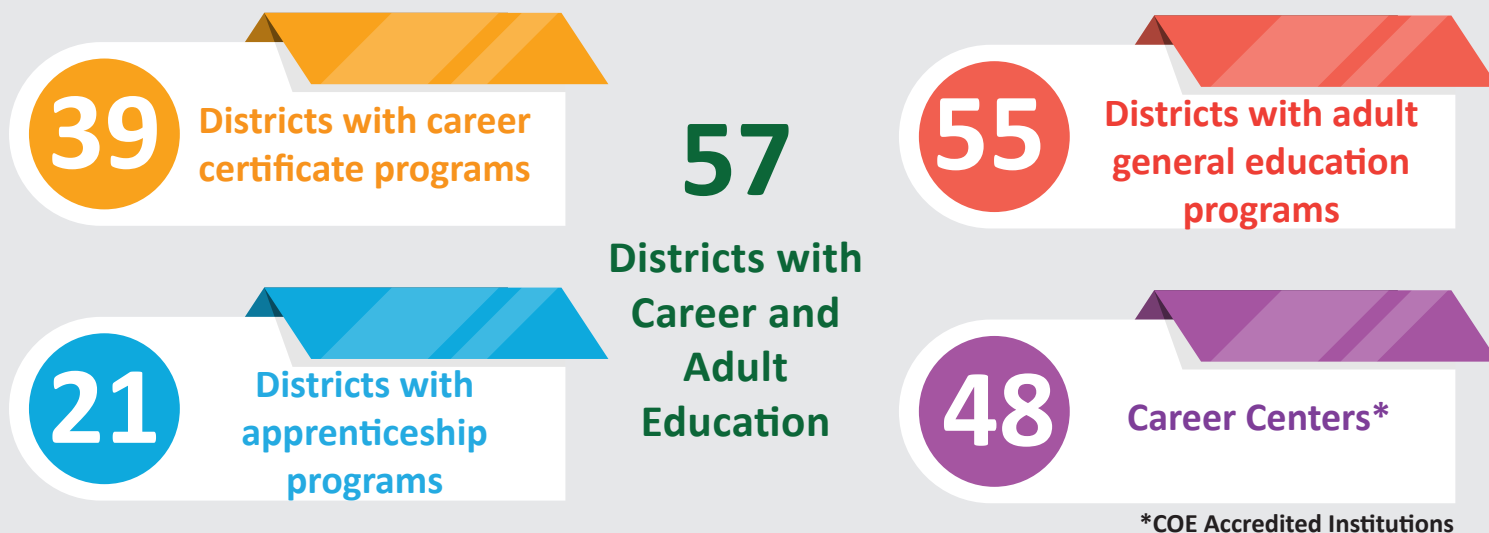
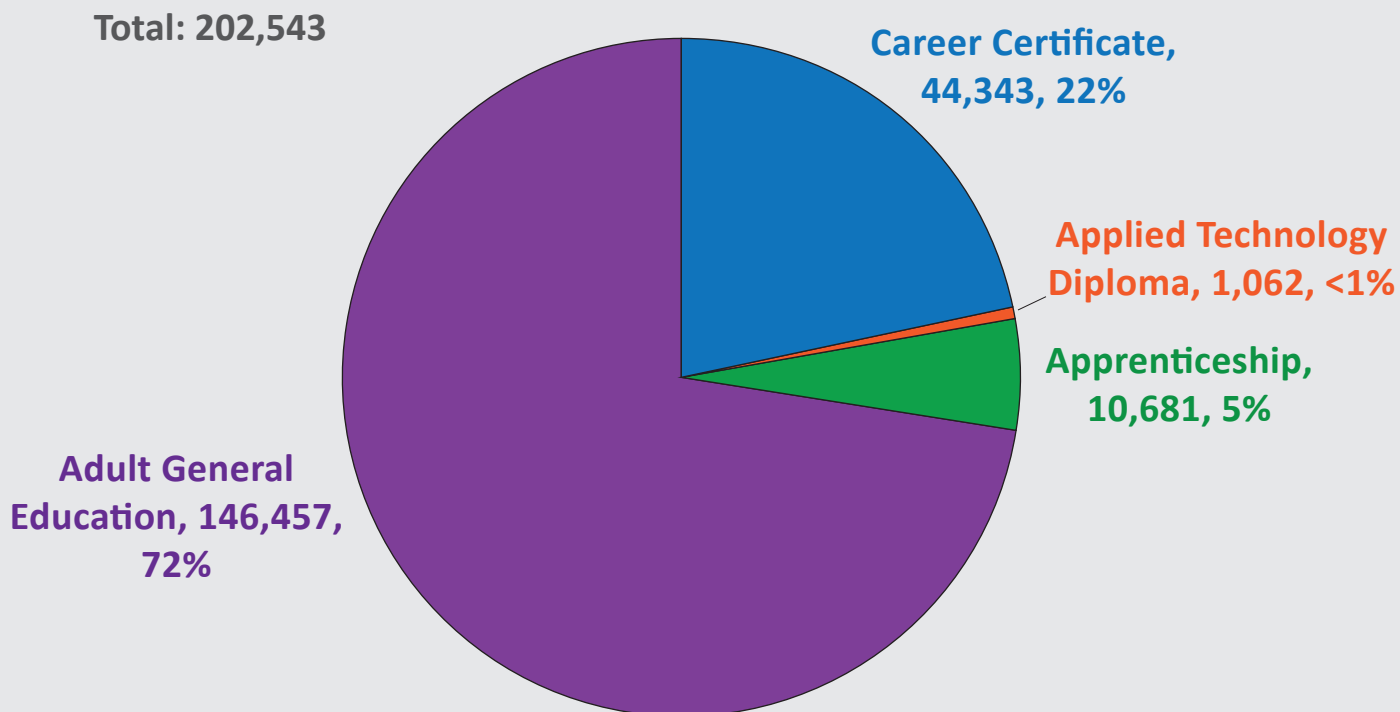


District Career and Adult Education Summary, 2018-19

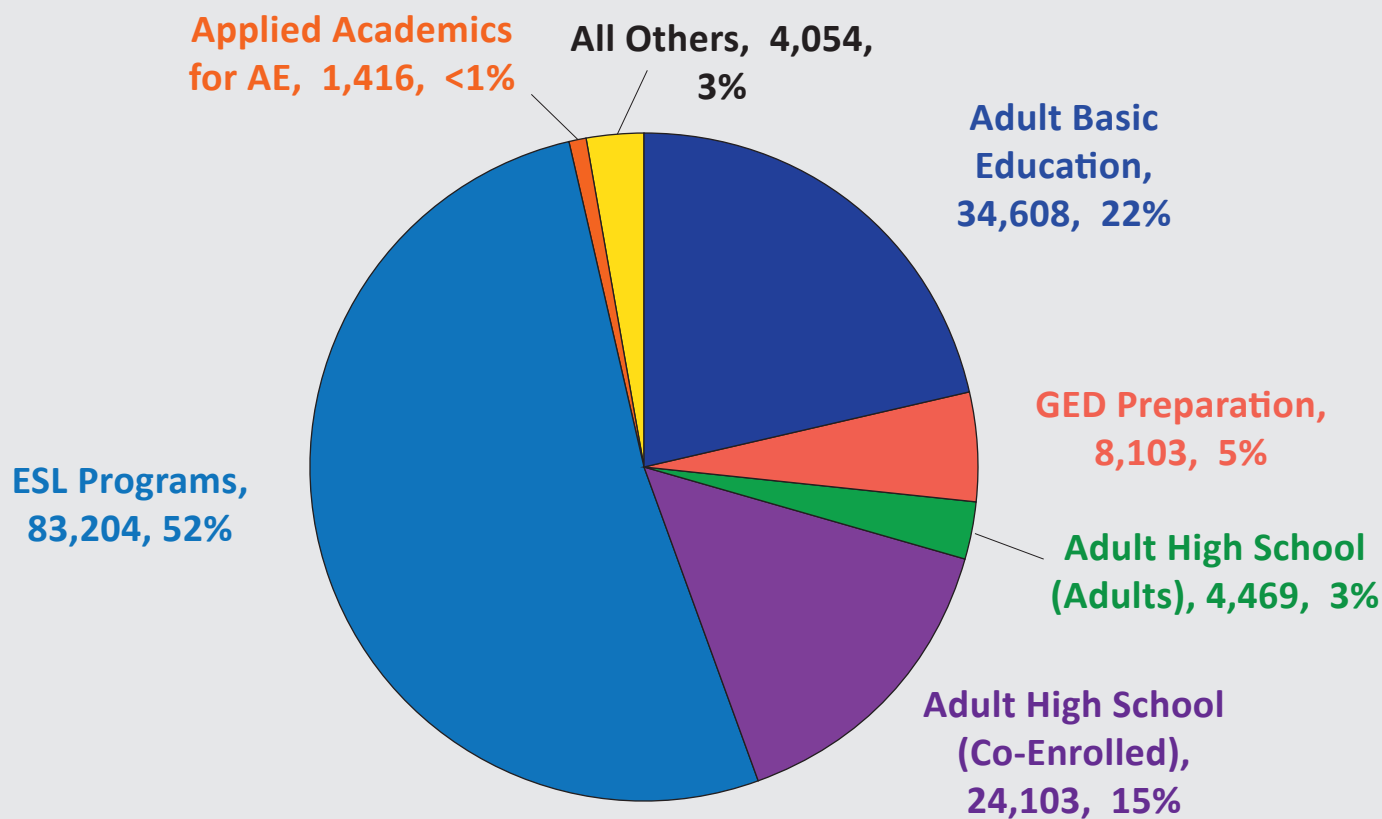
DISTRIBUTION OF PROGRAMS



STATEWIDE DISTRICT CAREER AND ADULT EDUCATION HEADCOUNT

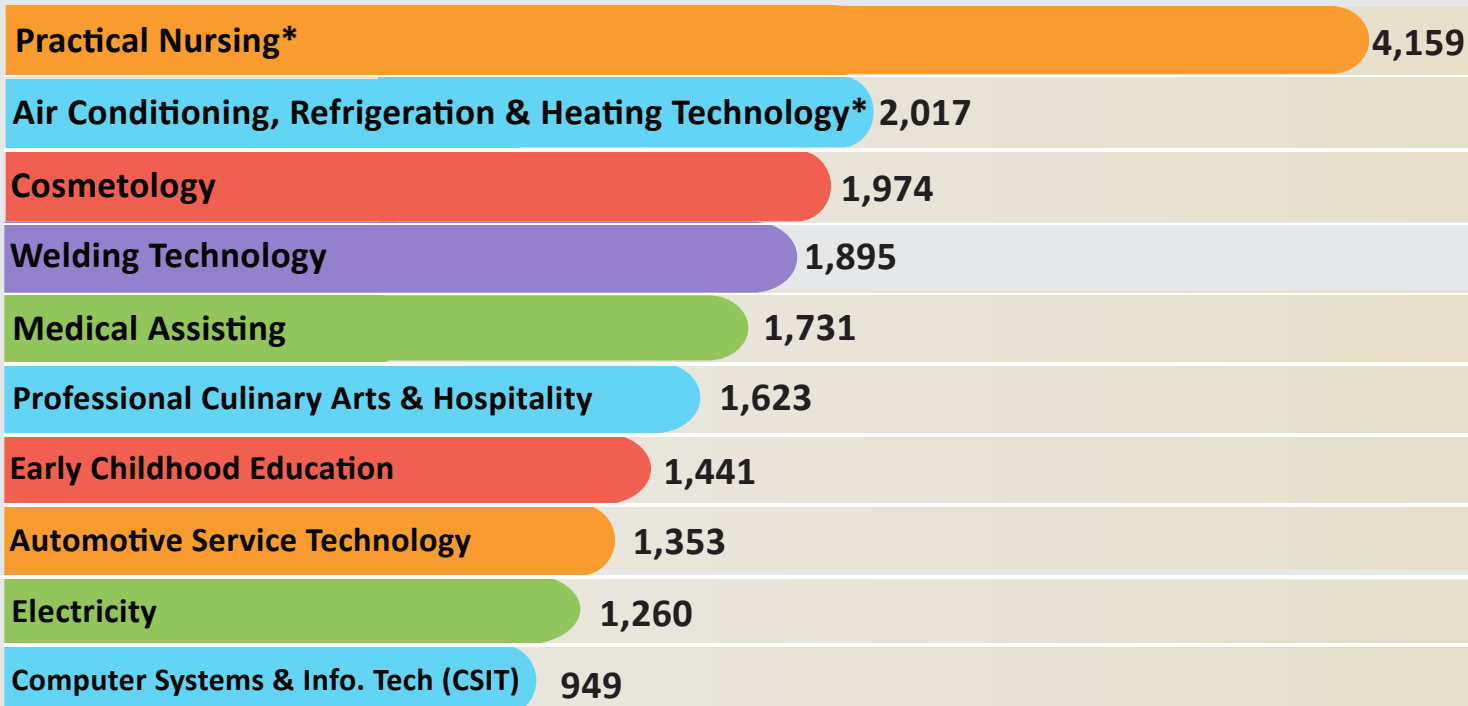


DISTRICT ADULT GENERAL EDUCATION ENROLLMENT BY PROGRAM¹



Source: FLDOE data.

TOP TEN DISTRICT POSTSECONDARY CAREER AND TECHNICAL EDUCATION PROGRAM ENROLLMENTS



*Air conditioning, Refrigeration and Heating Technology includes students reported in both the short and long program (Program numbers I470203 and C400100). Practical Nursing (H170605 and H170607) have been combined.

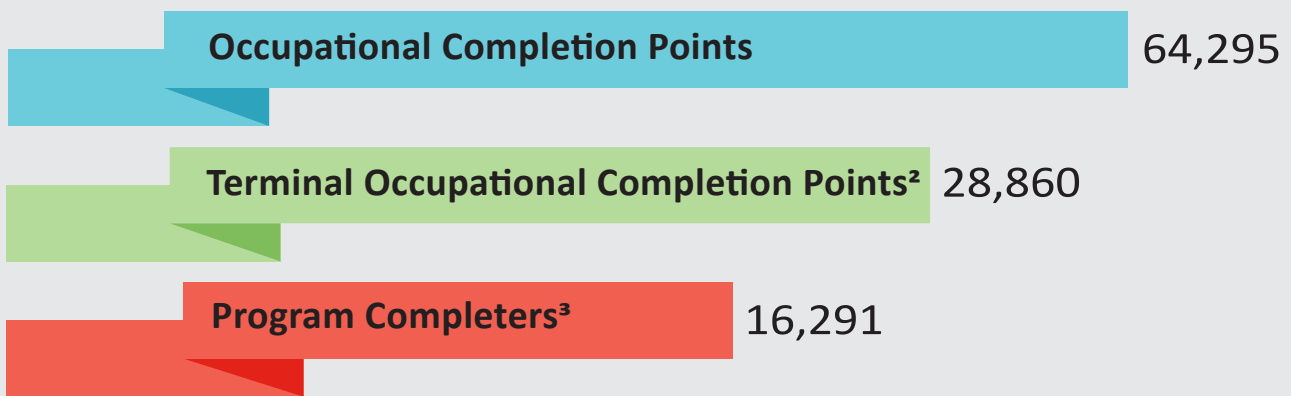
Source: FLDOE data.

GENDER AND RACE/ETHNICITY DISTRIBUTION BY DISTRICT WORKFORCE EDUCATION PROGRAM AREA

District Workforce Education Program Area	Gender		Race/Ethnicity						
	Female	Male	African-American	American Indian	Asian	Hispanic	Multi-racial	Pacific Islander	White
Adult General Education	55.2%	44.8%	24.7%	<1%	2.0%	53.3%	<1%	18.2%	1.2%
Career Certificate & Applied Technology Diploma	46.7%	53.3%	26.6%	<1%	2.0%	31.4%	<1%	37.4%	2.1%
Apprenticeship	9.3%	90.7%	20.9%	<1%	1.1%	22.9%	<1%	53.1%	1.3%

Source: FLDOE data.

DISTRICT POSTSECONDARY CAREER AND TECHNICAL EDUCATION COMPLETIONS



Source: FLDOE data.

ADULT GENERAL EDUCATION LEARNING GAINS AND DIPLOMAS

Adult General Education Program Area	Learning Gains (Literacy Completion Points)
Basic Education	12,583
Adult High School (Adult)	7,967
High School Equivalency Diploma – GED [®]	6,780
English as a Second Language (ESOL)	28,117
Total	55,447

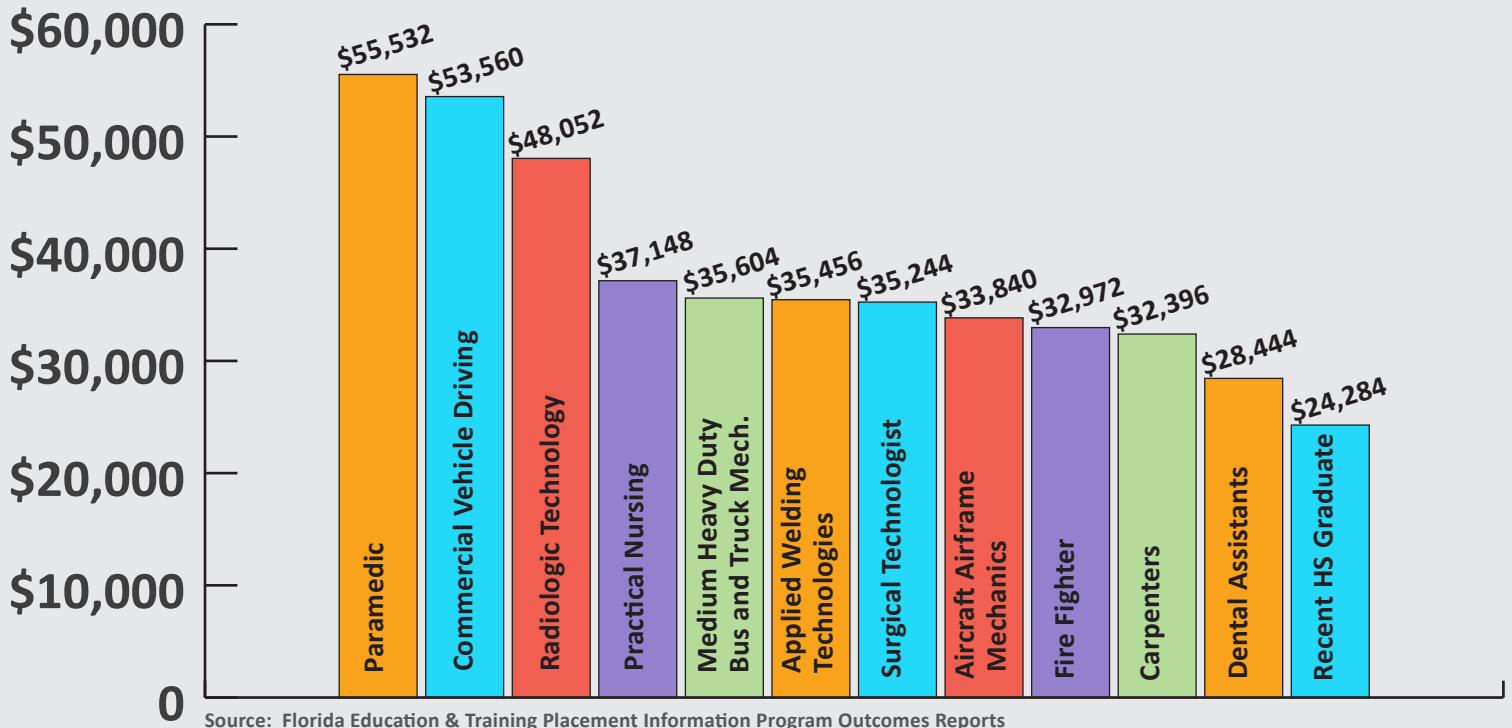
Source: FLDOE data.

EMPLOYMENT OUTCOMES

Estimated initial fulltime earnings of a 2016-17 district certificate terminal OCP earners was **\$35,604**.

69% of district certificate completers in 2016-17 were employed in fall 2017.

FALL 2018 AVERAGE INITIAL EARNINGS OF DISTRICT CAREER CERTIFICATE EARNERS IN SELECT OCCUPATIONS WITH STATEWIDE DEMAND



¹Students may have been enrolled in more than one program. Because of the duplication, the total enrollment in this chart is larger than the adult general education enrollment in the previous chart.

²Terminal Occupational Completion Points are exit points in a program from which students may exit with skills sufficient to prepare them for a specific occupation.

³Program completers are students who have completed all of the Occupational Completion Points in a certificate program and met applicable basic skills requirements.